



# SZABO SCANDIC

Part of Europa Biosite

## Produktinformation



Forschungsprodukte & Biochemikalien



Zellkultur & Verbrauchsmaterial



Diagnostik & molekulare Diagnostik



Laborgeräte & Service

Weitere Information auf den folgenden Seiten!  
See the following pages for more information!



### Lieferung & Zahlungsart

siehe unsere [Liefer- und Versandbedingungen](#)

### Zuschläge

- Mindermengenzuschlag
- Trockeneiszuschlag
- Gefahrgutzuschlag
- Expressversand

### SZABO-SCANDIC HandelsgmbH

Quellenstraße 110, A-1100 Wien

T. +43(0)1 489 3961-0

F. +43(0)1 489 3961-7

[mail@szabo-scandic.com](mailto:mail@szabo-scandic.com)

[www.szabo-scandic.com](http://www.szabo-scandic.com)

[linkedin.com/company/szaboscandic](https://www.linkedin.com/company/szaboscandic) 

## PARK2 (Human) IP-WB Antibody Pair

Catalog # : H00005071-PW2

規格 : [ 1 Set ]

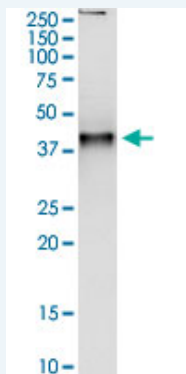
[List All](#)

### Specification

**Product Description:** This IP-WB antibody pair set comes with one antibody for immunoprecipitation and another to detect the precipitated protein in western blot.

**Reactivity:** Human

**Quality Control Testing:** Immunoprecipitation-Western Blot (IP-WB)



Immunoprecipitation of PARK2 transfected lysate using rabbit polyclonal anti-PARK2 and Protein A Magnetic Bead ([U0007](#)), and immunoblotted with mouse purified polyclonal anti-PARK2.

**Supplied Product:** Antibody pair set content:  
 1. Antibody pair for IP: rabbit polyclonal anti-PARK2 (300 ul)  
 2. Antibody pair for WB: mouse purified polyclonal anti-PARK2 (50 ug)

**Storage Instruction:** Store reagents of the antibody pair set at -20°C or lower. Please aliquot to avoid repeated freeze thaw cycle. Reagents should be returned to -20°C storage immediately after use.

### Applications

Immunoprecipitation-Western Blot

 [Protocol Download](#)

### Gene Information

**Entrez GeneID:** [5071](#)

**Gene Name:** PARK2

**Gene Alias:** AR-JP,LPRS2,PDJ,PRKN

**Gene Description:** Parkinson disease (autosomal recessive, juvenile) 2, parkin

**Omim ID:** [211980](#), [600116](#), [602544](#), [604370](#), [607572](#)

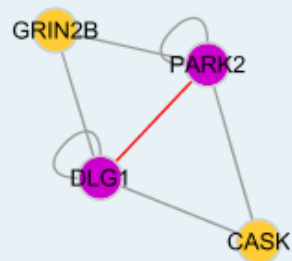
**Gene Ontology:** [Hyperlink](#)

**Gene Summary:** The precise function of this gene is unknown; however, the encoded

protein is a component of a multiprotein E3 ubiquitin ligase complex that mediates the targeting of substrate proteins for proteasomal degradation. Mutations in this gene are known to cause Parkinson disease and autosomal recessive juvenile Parkinson disease. Alternative splicing of this gene produces multiple transcript variants encoding distinct isoforms. Additional splice variants of this gene have been described but currently lack transcript support. [provided by RefSeq]

**Other Designations:** E3 ubiquitin ligase, OTTHUMP00000017565, OTTHUMP00000017566, OTTHUMP000017567, parkin, parkin 2

### Interactome



### Gene Pathway

[Parkinson's disease](#) [Ubiquitin mediated proteolysis](#)

### Related Disease

[Alzheimer disease](#) [Cardiovascular Diseases](#) [Choice Behavior](#) [Cognition Disorders](#)  
[Diabetes Mellitus, Type 2](#) [Diabetic Nephropathies](#) [Disease Progression](#)  
[Disease Susceptibility](#) [Dystonic Disorders](#) [Edema](#) [Essential Tremor](#) [Essential tremor](#)  
[Genetic Predisposition to Disease](#) [Leprosy](#) [Movement Disorders](#) [Nerve Degeneration](#)  
[Neuropsychological Tests](#) [Paratyphoid Fever](#) [Parkinson Disease](#)

... see more

[服務條款](#) | [隱私權政策](#) | [著作及商標](#) | [網站地圖](#)

©2016 亞諾法生技股份有限公司 Abnova Corporation. 版權所有.