



# SZABO SCANDIC

Part of Europa Biosite

## Produktinformation



Forschungsprodukte & Biochemikalien



Zellkultur & Verbrauchsmaterial



Diagnostik & molekulare Diagnostik



Laborgeräte & Service

Weitere Information auf den folgenden Seiten!  
See the following pages for more information!



### Lieferung & Zahlungsart

siehe unsere [Liefer- und Versandbedingungen](#)

### Zuschläge

- Mindermengenzuschlag
- Trockeneiszuschlag
- Gefahrgutzuschlag
- Expressversand

### SZABO-SCANDIC HandelsgmbH

Quellenstraße 110, A-1100 Wien

T. +43(0)1 489 3961-0

F. +43(0)1 489 3961-7

[mail@szabo-scandic.com](mailto:mail@szabo-scandic.com)

[www.szabo-scandic.com](http://www.szabo-scandic.com)

[linkedin.com/company/szaboscandic](https://www.linkedin.com/company/szaboscandic) 

## PAX2 polyclonal antibody (A01)

Catalog # : H00005076-A01

規格 : [ 50 uL ]

List All

### Specification

**Product Description:** Mouse polyclonal antibody raised against a partial recombinant PAX2.

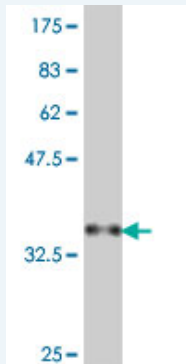
**Immunogen:** PAX2 (NP\_000269, 194 a.a. ~ 303 a.a) partial recombinant protein with GST tag.

**Sequence:** PRSNGEKRKREDEDVSEGSVPNGDSQSGVDSLRLKHLRADTFTQQQLEA  
LDRVFERPSYPDVFAQASEHIKSEQGNEYSLPALTPGLDEVKSSLSASTNP  
ELGSNVSGTQTYP

**Host:** Mouse

**Reactivity:** Human

**Quality Control Testing:** Antibody Reactive Against Recombinant Protein.



Western Blot detection against Immunogen (38.21 KDa) .

**Storage Buffer:** 50 % glycerol

**Storage Instruction:** Store at -20°C or lower. Aliquot to avoid repeated freezing and thawing.

**MSDS:** [Download](#)

**Datasheet:** [Download](#)

### Applications

**Western Blot (Recombinant protein)**

[Protocol Download](#)

**ELISA**

### Gene Information

**Entrez GeneID:** [5076](#)

**GeneBank Accession#:** [NM\\_000278](#)

### Application Image

Western Blot (Recombinant protein)

ELISA

**Protein Accession#:** [NP\\_000269](#)

**Gene Name:** PAX2

**Gene Alias:** -

**Gene Description:** paired box 2

**Omim ID:** [120330](#), [167409](#)

**Gene Ontology:** [Hyperlink](#)

**Gene Summary:** PAX2 encodes paired box gene 2, one of many human homologues of the Drosophila melanogaster gene prd. The central feature of this transcription factor gene family is the conserved DNA-binding paired box domain. PAX2 is believed to be a target of transcriptional suppression by the tumor suppressor gene WT1. Mutations within PAX2 have been shown to result in optic nerve colobomas and renal hypoplasia. Alternative splicing of this gene results in multiple transcript variants. [provided by RefSeq]

**Other Designations:** OTTHUMP00000020286,OTTHUMP00000020287,paired box gene 2,paired box homeotic gene 2,paired box protein 2

#### **Related Disease**

[Alzheimer Disease Genetic Predisposition to Disease Nephritis](#)  
[Purpura, Schoenlein-Henoch Vesico-Ureteral Reflux](#)