



SZABO SCANDIC

Part of Europa Biosite

Produktinformation



Forschungsprodukte & Biochemikalien



Zellkultur & Verbrauchsmaterial



Diagnostik & molekulare Diagnostik



Laborgeräte & Service

Weitere Information auf den folgenden Seiten!
See the following pages for more information!



Lieferung & Zahlungsart

siehe unsere [Liefer- und Versandbedingungen](#)

Zuschläge

- Mindermengenzuschlag
- Trockeneiszuschlag
- Gefahrgutzuschlag
- Expressversand

SZABO-SCANDIC HandelsgmbH

Quellenstraße 110, A-1100 Wien

T. +43(0)1 489 3961-0

F. +43(0)1 489 3961-7

mail@szabo-scandic.com

www.szabo-scandic.com

[linkedin.com/company/szaboscandic](https://www.linkedin.com/company/szaboscandic) 

PPP3CC monoclonal antibody (M01), clone 4D1

Catalog # : H00005533-M01

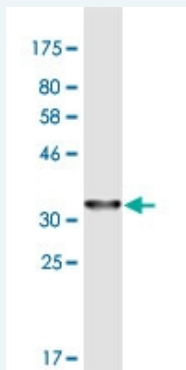
規格 : [100 ug]

[List All](#)

Specification

Product Description:	Mouse monoclonal antibody raised against a partial recombinant PPP3CC.
Immunogen:	PPP3CC (NP_005596.2, 1 a.a. ~ 81 a.a) partial recombinant protein with GST tag. MW of the GST tag alone is 26 KDa.
Sequence:	MSGRRFHLSTTDRVIKAVPFPTQRLTFKEVFENGKPKVDVLKNHLVKE GRLEEEVALKIINDGAAILRQEKTMIIEVDAPI
Host:	Mouse
Reactivity:	Human
Isotype:	IgG1 Kappa

Quality Control Testing: Antibody Reactive Against Recombinant Protein.



Western Blot detection against Immunogen (34.65 KDa) .

Storage Buffer: In 1x PBS, pH 7.4

Storage Instruction: Store at -20°C or lower. Aliquot to avoid repeated freezing and thawing.

MSDS: [Download](#)

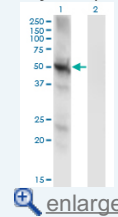
Datasheet: [Download](#)

Applications

Western Blot (Transfected lysate)

Application Image

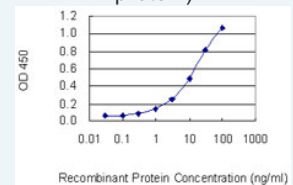
Western Blot (Transfected lysate)



[enlarge](#)

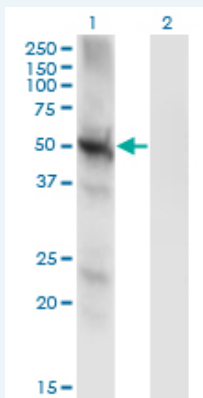
Western Blot (Recombinant protein)

Sandwich ELISA (Recombinant protein)



[enlarge](#)

ELISA



Western Blot analysis of PPP3CC expression in transfected 293T cell line by PPP3CC monoclonal antibody (M01), clone 4D1.

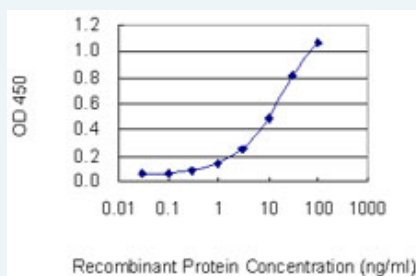
Lane 1: PPP3CC transfected lysate (Predicted MW: 58.1 KDa).
Lane 2: Non-transfected lysate.

[Protocol Download](#)

Western Blot (Recombinant protein)

[Protocol Download](#)

Sandwich ELISA (Recombinant protein)



Detection limit for recombinant GST tagged PPP3CC is 0.3 ng/ml as a capture antibody.

[Protocol Download](#)

ELISA

Gene Information

Entrez GeneID: [5533](#)

GeneBank [NM_005605](#)

Accession#:

Protein [NP_005596.2](#)

Accession#:

Gene Name: PPP3CC

Gene Alias: CALNA3

Gene Description: protein phosphatase 3 (formerly 2B), catalytic subunit, gamma isoform

Omim ID: [114107](#)

Gene Ontology: [Hyperlink](#)

Gene Summary: Calmodulin-dependent protein phosphatase, calcineurin, is involved in a wide range of biologic activities, acting as a Ca(2+)-dependent modifier of phosphorylation status. In testis, the motility of the sperm is thought to be controlled by cAMP-dependent phosphorylation and a unique form of calcineurin appears to be associated with the flagellum. The calcineurin holoenzyme is composed of catalytic and regulatory

subunits of 60 and 18 kD, respectively. At least 3 genes, calcineurin A-alpha (CALNA1; MIM 114105), calcineurin A-beta (CALNA2; MIM 114106), and calcineurin A-gamma (CALNA3), have been cloned for the catalytic subunit. These genes have been identified in humans, mice, and rats, and are highly conserved between species (90 to 95% amino acid identity).[supplied by OMIM

Other Designations: calcineurin A gamma

Gene Pathway

[Alzheimer's disease](#) [Amyotrophic lateral sclerosis \(ALS\)](#) [Apoptosis](#) [Axon guidance](#) [B cell receptor signaling pathway](#) [Calcium signaling pathway](#) [Long-term potentiation](#) [MAPK signaling pathway](#) [Natural killer cell mediated cytotoxicity](#) [T cell receptor signaling pathway](#) [VEGF signaling pathway](#) [Wnt signaling pathway](#)

Related Disease

[Amphetamine-Related Disorders](#) [Genetic Predisposition to Disease](#) [Neuropsychological Tests](#) [Psychoses, Substance-Induced](#) [Psychotic Disorders](#) [Schizophrenia](#) [Schizophrenia](#)

[服務條款](#) | [隱私權政策](#) | [著作及商標](#) | [網站地圖](#)

©2016 亞諾法生技股份有限公司 Abnova Corporation. 版權所有.