



SZABO SCANDIC

Part of Europa Biosite

Produktinformation



Forschungsprodukte & Biochemikalien



Zellkultur & Verbrauchsmaterial



Diagnostik & molekulare Diagnostik



Laborgeräte & Service

Weitere Information auf den folgenden Seiten!
See the following pages for more information!



Lieferung & Zahlungsart

siehe unsere [Liefer- und Versandbedingungen](#)

Zuschläge

- Mindermengenzuschlag
- Trockeneiszuschlag
- Gefahrgutzuschlag
- Expressversand

SZABO-SCANDIC HandelsgmbH

Quellenstraße 110, A-1100 Wien

T. +43(0)1 489 3961-0

F. +43(0)1 489 3961-7

mail@szabo-scandic.com

www.szabo-scandic.com

[linkedin.com/company/szaboscandic](https://www.linkedin.com/company/szaboscandic) 

PPP3R1 purified MaxPab rabbit polyclonal antibody (D01P) MaxPab®

Catalog # : H00005534-D01P

規格 : [100 ug]

List All

Specification

Product Description: Rabbit polyclonal antibody raised against a full-length human PPP3R1 protein.

Immunogen: PPP3R1 (NP_000936.1, 1 a.a. ~ 170 a.a) full-length human protein.

Sequence: MGNEASYPLEMCSHFDADEIKRLGKRFKKLDLNSGSLSVVEEFMSLPELQQNPLVQRVIDIFDTDGNGEVDFKEFIEGVSQFSVKGDKEQKLRFAFRIFYDMDKDGYSISNGELFQVLKMMVGNLKDQLQQIVDKTIINADKDGGRISFEFCAVVGGLDIHKMMVDV

Host: Rabbit

Reactivity: Human

Quality Control Testing: Antibody reactive against mammalian transfected lysate.

Storage Buffer: In 1x PBS, pH 7.4

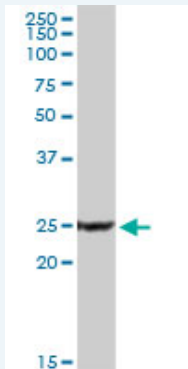
Storage Instruction: Store at -20°C or lower. Aliquot to avoid repeated freezing and thawing.

MSDS:  [Download](#)

Datasheet:  [Download](#)

Applications

Western Blot (Tissue lysate)



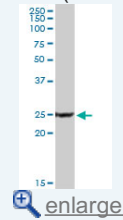
PPP3R1 MaxPab rabbit polyclonal antibody. Western Blot analysis of PPP3R1 expression in human liver.

 [Protocol Download](#)

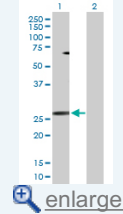
Western Blot (Transfected lysate)

Application Image

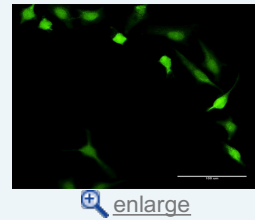
Western Blot (Tissue lysate)

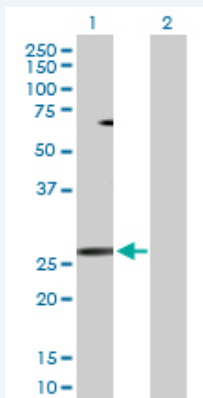


Western Blot (Transfected lysate)



Immunofluorescence



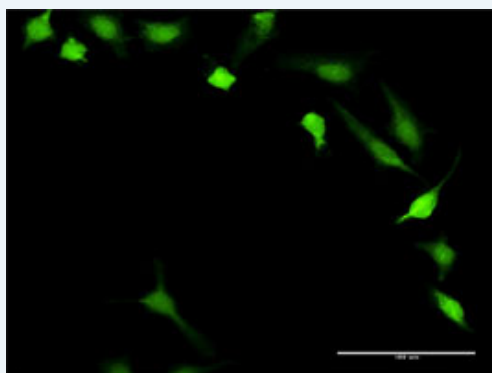


Western Blot analysis of PPP3R1 expression in transfected 293T cell line ([H00005534-T01](#)) by PPP3R1 MaxPab polyclonal antibody.

Lane 1: PPP3R1 transfected lysate(19.30 KDa).
Lane 2: Non-transfected lysate.

[Protocol Download](#)

Immunofluorescence



enlarge this image

Immunofluorescence of purified MaxPab antibody to PPP3R1 on HeLa cell. [antibody concentration 10 ug/ml]

[Protocol Download](#)

Gene Information

Entrez GeneID: [5534](#)

GeneBank Accession#: [NM_000945](#)

Protein Accession#: [NP_000936.1](#)

Gene Name: PPP3R1

Gene Alias: CALNB1,CNB,CNB1

Gene Description: protein phosphatase 3 (formerly 2B), regulatory subunit B, alpha isoform

Omim ID: [601302](#)

Gene Ontology: [Hyperlink](#)

Other Designations: calcineurin B, type I (19kDa),protein phosphatase 3 (formerly 2B), regulatory subunit B (19kD), alpha isoform (calcineurin B, type I),protein phosphatase 3 (formerly 2B), regulatory subunit B, 19kDa, alpha isoform (calcineurin B, type I),protein phosphata

Gene Pathway

[Alzheimer's disease](#) [Amyotrophic lateral sclerosis \(ALS\)](#) [Apoptosis](#) [Axon guidance](#)
[B cell receptor signaling pathway](#) [Calcium signaling pathway](#) [Long-term potentiation](#)
[MAPK signaling pathway](#) [Natural killer cell mediated cytotoxicity](#)
[T cell receptor signaling pathway](#) [VEGF signaling pathway](#) [Wnt signaling pathway](#)

Related Disease

[Alzheimer Disease](#) [Cardiovascular Diseases](#) [Cognition](#) [Diabetes Mellitus, Type 2](#)
[Disease Progression](#) [Edema](#) [Genetic Predisposition to Disease](#) [Hypertension](#)
[Hypertrophy, Left Ventricular](#) [Schizophrenia](#) [Schizophrenia](#) [Schizophrenic Psychology](#)
[Weight Gain](#)

[服務條款](#) | [隱私權政策](#) | [著作及商標](#) | [網站地圖](#)

©2016 亞諾法生技股份有限公司 Abnova Corporation. 版權所有.