



# SZABO SCANDIC

Part of Europa Biosite

## Produktinformation



Forschungsprodukte & Biochemikalien



Zellkultur & Verbrauchsmaterial



Diagnostik & molekulare Diagnostik



Laborgeräte & Service

Weitere Information auf den folgenden Seiten!  
See the following pages for more information!



### Lieferung & Zahlungsart

siehe unsere [Liefer- und Versandbedingungen](#)

### Zuschläge

- Mindermengenzuschlag
- Trockeneiszuschlag
- Gefahrgutzuschlag
- Expressversand

### SZABO-SCANDIC HandelsgmbH

Quellenstraße 110, A-1100 Wien

T. +43(0)1 489 3961-0

F. +43(0)1 489 3961-7

[mail@szabo-scandic.com](mailto:mail@szabo-scandic.com)

[www.szabo-scandic.com](http://www.szabo-scandic.com)

[linkedin.com/company/szaboscandic](https://www.linkedin.com/company/szaboscandic) 

## PPP3R2 (Human) Matched Antibody Pair

Catalog # : H00005535-AP11

規格 : [ 1 Set ]

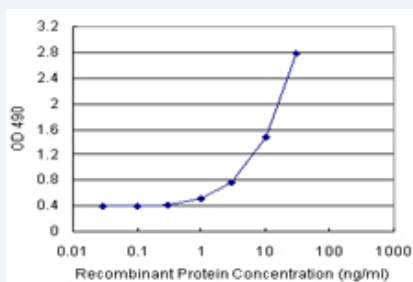
[List All](#)

### Specification

**Product Description:** This antibody pair set comes with matched antibody pair to detect and quantify protein level of human PPP3R2.

**Reactivity:** Human

**Quality Control Testing:** Standard curve using recombinant protein ( H00005535-P01 ) as an analyte.



Sandwich ELISA detection sensitivity ranging from 1 ng/ml to 100 ng/ml.

**Supplied Product:** Antibody pair set content:  
 1. Capture antibody: rabbit MaxPab® affinity purified polyclonal anti-PPP3R2 (100 ug)  
 2. Detection antibody: mouse monoclonal anti-PPP3R2, IgG2a Kappa (20 ug)  
 \*Reagents are sufficient for at least 1-2 x 96 well plates using recommended protocols.

**Storage Instruction:** Store reagents of the antibody pair set at -20°C or lower. Please aliquot to avoid repeated freeze thaw cycle. Reagents should be returned to -20°C storage immediately after use.

**MSDS:**  [Download](#)

### Applications

ELISA Pair (Recombinant protein)

 [Protocol Download](#)

### Gene Information

**Entrez GeneID:** [5535](#)

**Gene Name:** PPP3R2

**Gene Alias:** PPP3RL

**Gene Description:** protein phosphatase 3 (formerly 2B), regulatory subunit B, beta isoform

**Gene Ontology:** [Hyperlink](#)

**Other Designations:** CBLP-like, OTTHUMP00000021813, calcineurin B, type II (19kDa), calcineurin B-like protein, protein phosphatase 3 (formerly 2B),

### Application Image

ELISA Pair (Recombinant protein)

regulatory subunit B (19kD), beta isoform (calcineurin B, type II), protein phosphatase 3 (formerly 2B), regulatory subunit B, 19kDa

### Gene Pathway

---

[Alzheimer's disease](#) [Amyotrophic lateral sclerosis \(ALS\)](#) [Apoptosis](#) [Axon guidance](#)  
[B cell receptor signaling pathway](#) [Calcium signaling pathway](#) [Long-term potentiation](#)  
[MAPK signaling pathway](#) [Natural killer cell mediated cytotoxicity](#)  
[T cell receptor signaling pathway](#) [VEGF signaling pathway](#) [Wnt signaling pathway](#)

### Related Disease

---

[Cardiovascular Diseases](#) [Cognition](#) [Colitis, Ulcerative](#) [Crohn Disease](#) [Crohn's disease](#)  
[Diabetes Mellitus, Type 2](#) [Edema](#) [Genetic Predisposition to Disease](#)  
[Inflammatory Bowel Diseases](#) [Schizophrenia](#) [Schizophrenia](#) [Schizophrenic Psychology](#)  
[Weight Gain](#)

---

[服務條款](#) | [隱私權政策](#) | [著作及商標](#) | [網站地圖](#)

©2016 亞諾法生技股份有限公司 Abnova Corporation. 版權所有.