



SZABO SCANDIC

Part of Europa Biosite

Produktinformation



Forschungsprodukte & Biochemikalien



Zellkultur & Verbrauchsmaterial



Diagnostik & molekulare Diagnostik



Laborgeräte & Service

Weitere Information auf den folgenden Seiten!
See the following pages for more information!



Lieferung & Zahlungsart

siehe unsere [Liefer- und Versandbedingungen](#)

Zuschläge

- Mindermengenzuschlag
- Trockeneiszuschlag
- Gefahrgutzuschlag
- Expressversand

SZABO-SCANDIC HandelsgmbH

Quellenstraße 110, A-1100 Wien

T. +43(0)1 489 3961-0

F. +43(0)1 489 3961-7

mail@szabo-scandic.com

www.szabo-scandic.com

[linkedin.com/company/szaboscandic](https://www.linkedin.com/company/szaboscandic) 

PPP3R2 (Human) Matched Antibody Pair

Catalog # : H00005535-AP22

規格 : [1 Set]

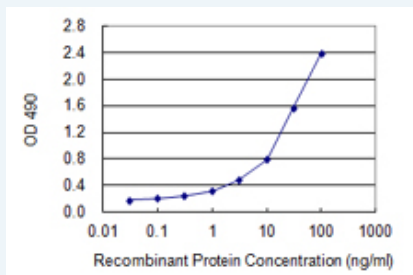
[List All](#)

Specification

Product Description: This antibody pair set comes with matched antibody pair to detect and quantify protein level of human PPP3R2.

Reactivity: Human

Quality Control Testing: Standard curve using recombinant protein (H00005535-P01) as an analyte.



Sandwich ELISA detection sensitivity ranging from 0.03 ng/ml to 100 ng/ml.

Supplied Product: Antibody pair set content:
 1. Capture antibody: rabbit MaxPab® affinity purified polyclonal anti-PPP3R2 (100 ug)
 2. Detection antibody: mouse purified polyclonal anti-PPP3R2 (20 ug)
 *Reagents are sufficient for at least 1-2 x 96 well plates using recommended protocols.

Storage Instruction: Store reagents of the antibody pair set at -20°C or lower. Please aliquot to avoid repeated freeze thaw cycle. Reagents should be returned to -20°C storage immediately after use.

MSDS:  [Download](#)

Applications

ELISA Pair (Recombinant protein)

 [Protocol Download](#)

Gene Information

Entrez GeneID: [5535](#)

Gene Name: PPP3R2

Gene Alias: PPP3RL

Gene Description: protein phosphatase 3 (formerly 2B), regulatory subunit B, beta isoform

Gene Ontology: [Hyperlink](#)

Other Designations: CBLP-like, OTTHUMP00000021813, calcineurin B, type II (19kDa), calcineurin B-like protein, protein phosphatase 3 (formerly 2B),

regulatory subunit B (19kD), beta isoform (calcineurin B, type II), protein phosphatase 3 (formerly 2B), regulatory subunit B, 19kDa

Gene Pathway

[Alzheimer's disease](#) [Amyotrophic lateral sclerosis \(ALS\)](#) [Apoptosis](#) [Axon guidance](#)
[B cell receptor signaling pathway](#) [Calcium signaling pathway](#) [Long-term potentiation](#)
[MAPK signaling pathway](#) [Natural killer cell mediated cytotoxicity](#)
[T cell receptor signaling pathway](#) [VEGF signaling pathway](#) [Wnt signaling pathway](#)

Related Disease

[Cardiovascular Diseases](#) [Cognition](#) [Colitis, Ulcerative](#) [Crohn Disease](#) [Crohn's disease](#)
[Diabetes Mellitus, Type 2](#) [Edema](#) [Genetic Predisposition to Disease](#)
[Inflammatory Bowel Diseases](#) [Schizophrenia](#) [Schizophrenia](#) [Schizophrenic Psychology](#)
[Weight Gain](#)

[服務條款](#) | [隱私權政策](#) | [著作及商標](#) | [網站地圖](#)

©2016 亞諾法生技股份有限公司 Abnova Corporation. 版權所有.