



SZABO SCANDIC

Part of Europa Biosite

Produktinformation



Forschungsprodukte & Biochemikalien



Zellkultur & Verbrauchsmaterial



Diagnostik & molekulare Diagnostik



Laborgeräte & Service

Weitere Information auf den folgenden Seiten!
See the following pages for more information!



Lieferung & Zahlungsart

siehe unsere [Liefer- und Versandbedingungen](#)

Zuschläge

- Mindermengenzuschlag
- Trockeneiszuschlag
- Gefahrgutzuschlag
- Expressversand

SZABO-SCANDIC HandelsgmbH

Quellenstraße 110, A-1100 Wien

T. +43(0)1 489 3961-0

F. +43(0)1 489 3961-7

mail@szabo-scandic.com

www.szabo-scandic.com

[linkedin.com/company/szaboscandic](https://www.linkedin.com/company/szaboscandic) 



PPP6C purified MaxPab mouse polyclonal antibody (B01P) MaxPab®

Catalog # : H00005537-B01P

規格 : [50 ug]

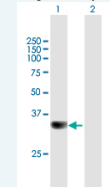
[List All](#)


Specification

Product Description:	Mouse polyclonal antibody raised against a full-length human PPP6C protein.
Immunogen:	PPP6C (AAH06990, 1 a.a. ~ 305 a.a) full-length human protein.
Sequence:	MAPLDDLKDYVEIARLCKYLPENDLKRLCDYVCDLLEESN/QPVSTPVTV CGDIHGQFYDLCELFRTGGQVPDTNYIFMGDFVDSGYYSLFTYLLAL KAKWPDRITLLRGNHESRQITQVYGFYDECQTKYGNANAWRYCTKVLD MLTVAALIDEQILCVHGGLSPDIKTLDQIRTIERNQEIPHKGAFCDLVWSDP EDVDTWAISPRGAGWLFGAKVTNEFVHINLKLICRAHQLVHEGYKFMFD EKLVTVWSAPNYCYRCGNIASIMVFKDVNTREPKLFRAVPDSERVIPRT TTPYFL
Host:	Mouse
Reactivity:	Human
Quality Control Testing:	Antibody reactive against mammalian transfected lysate.
Storage Buffer:	In 1x PBS, pH 7.4
Storage Instruction:	Store at -20°C or lower. Aliquot to avoid repeated freezing and thawing.
MSDS:	 Download
Datasheet:	 Download

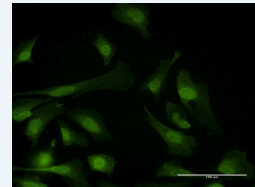
Application Image


Western Blot (Transfected lysate)



 [enlarge](#)

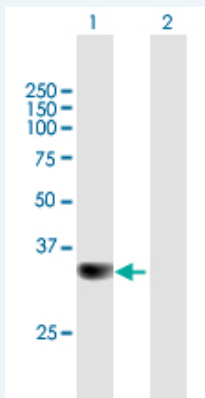
Immunofluorescence



 [enlarge](#)

Applications


Western Blot (Transfected lysate)



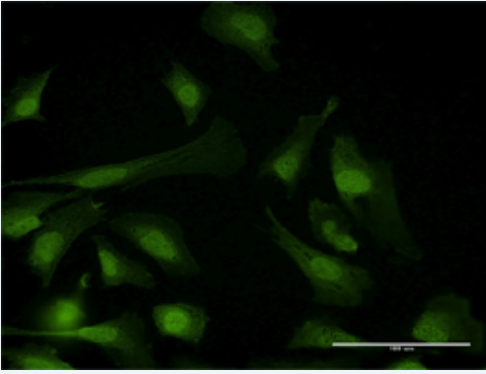
Western Blot analysis of PPP6C expression in transfected 293T cell line (H00005537-T01) by PPP6C MaxPab polyclonal antibody.

Lane 1: PPP6C transfected lysate(33.66 KDa).

Lane 2: Non-transfected lysate.

 [Protocol Download](#)

Immunofluorescence



[enlarge this image](#)

Immunofluorescence of purified MaxPab antibody to PPP6C on HeLa cell. [antibody concentration 10 ug/ml]

 [Protocol Download](#)

Gene Information

Entrez GeneID: [5537](#)

**GeneBank
Accession#:** [BC006990](#)

**Protein
Accession#:** [AAH06990](#)

Gene Name: PPP6C

Gene Alias: FLJ92648,MGC12249

**Gene
Description:** protein phosphatase 6, catalytic subunit

Omim ID: [300141](#)

Gene Ontology: [Hyperlink](#)

Gene Summary: This gene encodes the catalytic subunit of protein phosphatase, a component of a signaling pathway regulating cell cycle progression. Splice variants encoding different protein isoforms exist. The pseudogene of this gene is located on chromosome X. [provided by RefSeq]

**Other
Designations:** OTTHUMP00000022122,serine/threonine protein phosphatase catalytic subunit

Related Disease

[Celiac Disease Genetic Predisposition to Disease](#)

[服務條款](#) | [隱私權政策](#) | [著作及商標](#) | [網站地圖](#)

©2016 亞諾法生技股份有限公司 Abnova Corporation. 版權所有.