



SZABO SCANDIC

Part of Europa Biosite

Produktinformation



Forschungsprodukte & Biochemikalien



Zellkultur & Verbrauchsmaterial



Diagnostik & molekulare Diagnostik



Laborgeräte & Service

Weitere Information auf den folgenden Seiten!
See the following pages for more information!



Lieferung & Zahlungsart

siehe unsere [Liefer- und Versandbedingungen](#)

Zuschläge

- Mindermengenzuschlag
- Trockeneiszuschlag
- Gefahrgutzuschlag
- Expressversand

SZABO-SCANDIC HandelsgmbH

Quellenstraße 110, A-1100 Wien

T. +43(0)1 489 3961-0

F. +43(0)1 489 3961-7

mail@szabo-scandic.com

www.szabo-scandic.com

[linkedin.com/company/szaboscandic](https://www.linkedin.com/company/szaboscandic) 



PPP6C monoclonal antibody (M01), clone 1B7

Catalog # : H00005537-M01

規格 : [100 ug]

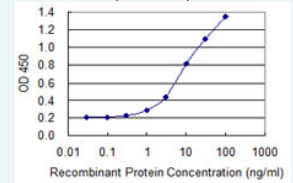
[List All](#)


Specification

Product Description:	Mouse monoclonal antibody raised against a full-length recombinant PPP6C.
Immunogen:	PPP6C (AAH06990, 1 a.a. ~ 305 a.a) full-length recombinant protein with GST tag. MW of the GST tag alone is 26 KDa.
Sequence:	MAPLDDLKDYVEIARLCKYLPENDLKRLCDYVCDLLLEESNVQPVSTPVTV CGDIHGQFYDLCELFRTGGQVPDTNYIFMGDFVDSGYYSLETFTYLLAL KAKWPDRITLLRGNHESRQITQVYGFYDECQTKYGNANAWRYCTKVLD MLTVAALIDEQILCVHGGLSPDIKTLQIRTIERNQEIPHGAFCDLVWSDP EDVDTWAISPRGAGWLFGAKVTNEFVHINNLKLCRAHQLVHEGYKFMFD EKLVTVWSAPNYCYRCGNIASIMVFKDVNTREPKLFRVAPDSERVIPRRT TTPYFL
Host:	Mouse
Reactivity:	Human
Isotype:	IgG2b Kappa
Quality Control Testing:	Antibody Reactive Against Recombinant Protein.
Storage Buffer:	In 1x PBS, pH 7.4
Storage Instruction:	Store at -20°C or lower. Aliquot to avoid repeated freezing and thawing.
MSDS:	 Download
Datasheet:	 Download

Application Image

Sandwich ELISA (Recombinant protein)

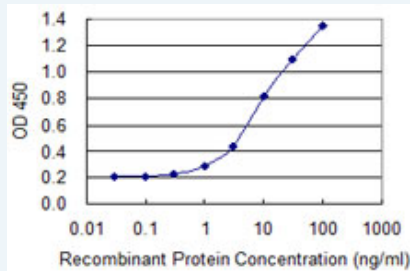


 [enlarge](#)


ELISA

Applications

Sandwich ELISA (Recombinant protein)



Detection limit for recombinant GST tagged PPP6C is 0.3 ng/ml as a capture antibody.

 [Protocol Download](#)

ELISA

Gene Information

Entrez GeneID: [5537](#)

GeneBank Accession#: [BC006990](#)

Protein Accession#: [AAH06990](#)

Gene Name: PPP6C

Gene Alias: FLJ92648,MGC12249

Gene Description: protein phosphatase 6, catalytic subunit

Omim ID: [300141](#)

Gene Ontology: [Hyperlink](#)

Gene Summary: This gene encodes the catalytic subunit of protein phosphatase, a component of a signaling pathway regulating cell cycle progression. Splice variants encoding different protein isoforms exist. The pseudogene of this gene is located on chromosome X. [provided by RefSeq]

Other Designations: OTTHUMP00000022122,serine/threonine protein phosphatase catalytic subunit

Related Disease

[Celiac Disease Genetic Predisposition to Disease](#)

[服務條款](#) | [隱私權政策](#) | [著作及商標](#) | [網站地圖](#)

©2016 亞諾法生技股份有限公司 Abnova Corporation. 版權所有.