



# SZABO SCANDIC

Part of Europa Biosite

## Produktinformation



Forschungsprodukte & Biochemikalien



Zellkultur & Verbrauchsmaterial



Diagnostik & molekulare Diagnostik



Laborgeräte & Service

Weitere Information auf den folgenden Seiten!  
See the following pages for more information!



### Lieferung & Zahlungsart

siehe unsere [Liefer- und Versandbedingungen](#)

### Zuschläge

- Mindermengenzuschlag
- Trockeneiszuschlag
- Gefahrgutzuschlag
- Expressversand

### SZABO-SCANDIC HandelsgmbH

Quellenstraße 110, A-1100 Wien

T. +43(0)1 489 3961-0

F. +43(0)1 489 3961-7

[mail@szabo-scandic.com](mailto:mail@szabo-scandic.com)

[www.szabo-scandic.com](http://www.szabo-scandic.com)

[linkedin.com/company/szaboscandic](https://www.linkedin.com/company/szaboscandic) 

## PPP6C 293T Cell Transient Overexpression Lysate(Denatured)

Catalog # : H00005537-T01

規格 : [ 100 uL ]

List All

### Specification

**Transfected Cell Line:** 293T

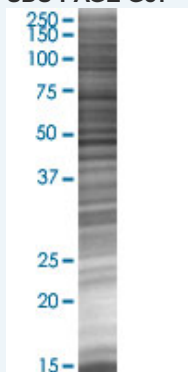
**Plasmid:** pCMV-PPP6C full-length

**Host:** Human

**Theoretical MW (kDa):** 33.66

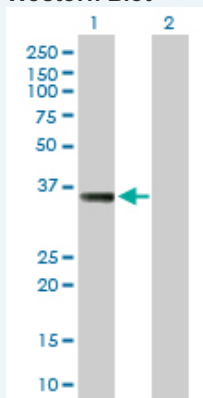
**Quality Control Testing:** Transient overexpression cell lysate was tested with Anti-PPP6C antibody (H00005537-B01) by Western Blots.

#### SDS-PAGE Gel



PPP6C transfected lysate.

#### Western Blot



Lane 1: PPP6C transfected lysate ( 33.66 KDa)

Lane 2: Non-transfected lysate.

**Storage Buffer:** 1X Sample Buffer (50 mM Tris-HCl, 2% SDS, 10% glycerol, 300 mM 2-mercaptoethanol, 0.01% Bromophenol blue)

**Storage Instruction:** Store at -80°C. Aliquot to avoid repeated freezing and thawing.

**MSDS:**  [Download](#)

### Applications

## Western Blot

### Gene Information

Entrez GeneID: [5537](#)

GeneBank  
Accession#: [BC006990](#)

Protein  
Accession#: [AAH06990](#)

Gene Name: PPP6C

Gene Alias: FLJ92648,MGC12249

Gene  
Description: protein phosphatase 6, catalytic subunit

Omim ID: [300141](#)

Gene Ontology: [Hyperlink](#)

**Gene Summary:** This gene encodes the catalytic subunit of protein phosphatase, a component of a signaling pathway regulating cell cycle progression. Splice variants encoding different protein isoforms exist. The pseudogene of this gene is located on chromosome X. [provided by RefSeq]

Other  
Designations: OTTHUMP00000022122,serine/threonine protein phosphatase catalytic subunit

### Related Disease

[Celiac Disease Genetic Predisposition to Disease](#)