



# SZABO SCANDIC

Part of Europa Biosite

## Produktinformation



Forschungsprodukte & Biochemikalien



Zellkultur & Verbrauchsmaterial



Diagnostik & molekulare Diagnostik



Laborgeräte & Service

Weitere Information auf den folgenden Seiten!  
See the following pages for more information!



### Lieferung & Zahlungsart

siehe unsere [Liefer- und Versandbedingungen](#)

### Zuschläge

- Mindermengenzuschlag
- Trockeneiszuschlag
- Gefahrgutzuschlag
- Expressversand

### SZABO-SCANDIC HandelsgmbH

Quellenstraße 110, A-1100 Wien

T. +43(0)1 489 3961-0

F. +43(0)1 489 3961-7

[mail@szabo-scandic.com](mailto:mail@szabo-scandic.com)

[www.szabo-scandic.com](http://www.szabo-scandic.com)

[linkedin.com/company/szaboscandic](https://www.linkedin.com/company/szaboscandic) 

**PPT1 purified MaxPab mouse polyclonal antibody (B01P)** MaxPab®

Catalog # : H00005538-B01P

規格 : [ 50 ug ]

[List All](#)

**Specification**

**Product Description:** Mouse polyclonal antibody raised against a full-length human PPT1 protein.

**Immunogen:** PPT1 (NP\_000301.1, 1 a.a. ~ 306 a.a) full-length human protein.

**Sequence:**  
 MASPGCLWLLAVALLPWTCASRALQHLDPPAPLPLVIWHGMGDSCCNP  
 LSMGAIKMVEKKIPGIYVLSLEIGKTLMEDVENSFFLNVNSQVTTVCQAL  
 AKDPKLQQGYNAMGFSQGGQFLRAVAQRCPSPPMINLISVGGQHGGVF  
 GLPRCPGESSHCDFIRKTLNAGAYSKVQERLVQAEYWHDPKEDVYRN  
 HSIFLADINQERGINESYKKNLMLKKFVM/KFLNDSMVPVDSEWFGFYR  
 SGQAKETIPLQETSLYTQDRLGLKEMDNAGQLVFLATEGDHLQLSEEW  
 FYAHIIIFPLG

**Host:** Mouse

**Reactivity:** Human

**Quality Control Testing:** Antibody reactive against mammalian transfected lysate.

**Storage Buffer:** In 1x PBS, pH 7.4

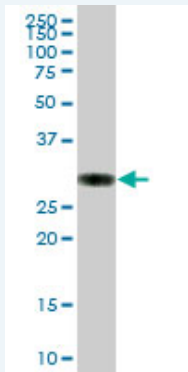
**Storage Instruction:** Store at -20°C or lower. Aliquot to avoid repeated freezing and thawing.

**MSDS:**  [Download](#)

**Datasheet:**  [Download](#)

**Applications**

**Western Blot (Tissue lysate)**



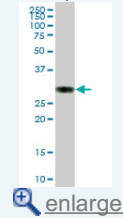
PPT1 MaxPab polyclonal antibody. Western Blot analysis of PPT1 expression in human liver.

 [Protocol Download](#)

**Western Blot (Transfected lysate)**

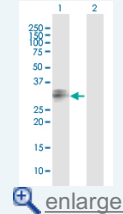
**Application Image**

**Western Blot (Tissue lysate)**



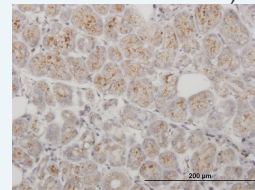
 [enlarge](#)


**Western Blot (Transfected lysate)**

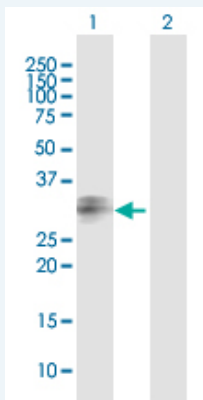


 [enlarge](#)

**Immunohistochemistry (Formalin/PFA-fixed paraffin-embedded sections)**



 [enlarge](#)

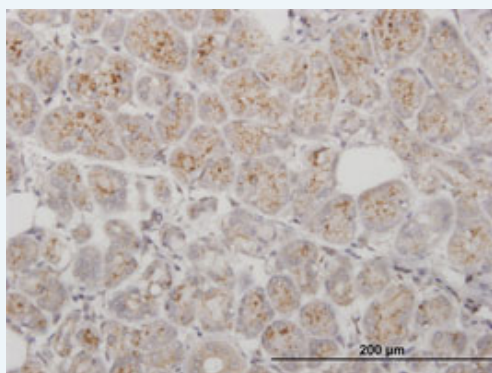


Western Blot analysis of PPT1 expression in transfected 293T cell line ([H00005538-T01](#)) by PPT1 MaxPab polyclonal antibody.

Lane 1: PPT1 transfected lysate(33.66 KDa).  
Lane 2: Non-transfected lysate.

[Protocol Download](#)

### Immunohistochemistry (Formalin/PFA-fixed paraffin-embedded sections)



enlarge this image

Immunoperoxidase of purified MaxPab antibody to PPT1 on formalin-fixed paraffin-embedded human salivary gland. [antibody concentration 3 ug/ml]

[Protocol Download](#)

### Gene Information

Entrez GeneID: [5538](#)

GeneBank [NM\\_000310](#)  
Accession#:

Protein [NP\\_000301.1](#)  
Accession#:

Gene Name: PPT1

Gene Alias: CLN1,INCL,PPT

Gene Description: palmitoyl-protein thioesterase 1

Omim ID: [256730](#), [600722](#)

Gene Ontology: [Hyperlink](#)

**Gene Summary:** The protein encoded by this gene is a small glycoprotein involved in the catabolism of lipid-modified proteins during lysosomal degradation. The encoded enzyme removes thioester-linked fatty acyl groups such as palmitate from cysteine residues. Defects in this gene are a cause of infantile neuronal ceroid lipofuscinosis 1 (CLN1, or INCL) and neuronal ceroid lipofuscinosis 4 (CLN4). Two transcript variants encoding different isoforms have been found for this gene

**Other** OTTHUMP0000004836,ceroid-palmitoyl-palmitoyl-protein thioesterase  
**Designations:** 1,palmitoyl-protein hydrolase 1

---

### Gene Pathway

---

[Fatty acid elongation in mitochondria](#) [Lysosome](#) [Metabolic pathways](#)

### Related Disease

---

[Dominance, Cerebral Neuronal Ceroid-Lipofuscinoses](#) [Schizophrenia](#) [Schizophrenia](#)

---

[服務條款](#) | [隱私權政策](#) | [著作及商標](#) | [網站地圖](#)

©2016 亞諾法生技股份有限公司 Abnova Corporation. 版權所有.