



SZABO SCANDIC

Part of Europa Biosite

Produktinformation



Forschungsprodukte & Biochemikalien



Zellkultur & Verbrauchsmaterial



Diagnostik & molekulare Diagnostik



Laborgeräte & Service

Weitere Information auf den folgenden Seiten!
See the following pages for more information!



Lieferung & Zahlungsart

siehe unsere [Liefer- und Versandbedingungen](#)

Zuschläge

- Mindermengenzuschlag
- Trockeneiszuschlag
- Gefahrgutzuschlag
- Expressversand

SZABO-SCANDIC HandelsgmbH

Quellenstraße 110, A-1100 Wien

T. +43(0)1 489 3961-0

F. +43(0)1 489 3961-7

mail@szabo-scandic.com

www.szabo-scandic.com

[linkedin.com/company/szaboscandic](https://www.linkedin.com/company/szaboscandic) 


PPY MaxPab mouse polyclonal antibody (B02) MaxPab®

Catalog # : H00005539-B02

規格 : [50 uL]

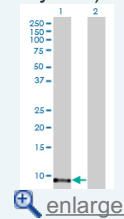
[List All](#)

Specification

Product Description:	Mouse polyclonal antibody raised against a full-length human PPY protein.
Immunogen:	PPY (AAH32225, 1 a.a. ~ 95 a.a) full-length human protein.
Sequence:	MAAARLCLSLLLLSTCVALLLQPLLGAQGAPLEPVYPGDNATPEQMAQY AADLRRYINMLTRPRYGKRHKEDTLAFSEWGSPPHAAVPRELSPLDL
Host:	Mouse
Reactivity:	Human
Quality Control Testing:	Antibody reactive against mammalian transfected lysate.
Storage Buffer:	No additive
Storage Instruction:	Store at -20°C or lower. Aliquot to avoid repeated freezing and thawing.
Note:	For IHC and IF applications, antibody purification with Protein A will be needed prior to use.
Datasheet:	 Download

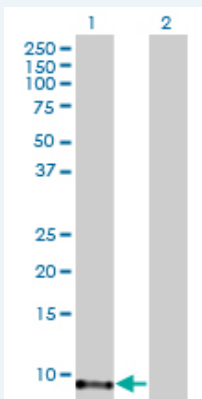
Application Image

Western Blot (Transfected lysate)



Applications

Western Blot (Transfected lysate)



Western Blot analysis of PPY expression in transfected 293T cell line ([H00005539-T03](#)) by PPY MaxPab polyclonal antibody.

Lane 1: PPY transfected lysate(10.56 KDa).
Lane 2: Non-transfected lysate.

 [Protocol Download](#)

Gene Information

Entrez GeneID: [5539](#)

**GeneBank
Accession#:** [BC032225](#)

**Protein
Accession#:** [AAH32225](#)

Gene Name: PPY

Gene Alias: PNP

**Gene
Description:** pancreatic polypeptide

Omim ID: [167780](#)

Gene Ontology: [Hyperlink](#)

Gene Summary: This gene belongs to the NPY family and it encodes a protein that is synthesized as a 95 aa polypeptide precursor in the pancreatic islets of Langerhans. It is cleaved into two peptide products; the active hormone of 36 aa and an icosapeptide of unknown function. The hormone acts as a regulator of pancreatic and gastrointestinal functions and may be important in the regulation of food intake. Plasma level of this hormone has been shown to be reduced in conditions associated with increased food intake and elevated in anorexia nervosa. In addition, infusion of this hormone in obese rodents has shown to decrease weight gain. [provided by RefSeq]

**Other
Designations:** pancreatic polypeptide Y

Gene Pathway

[Neuroactive ligand-receptor interaction](#)

Related Disease

[Diabetes Mellitus, Type 2](#) [Obesity](#) [Obesity](#)