



# SZABO SCANDIC

Part of Europa Biosite

## Produktinformation



Forschungsprodukte & Biochemikalien



Zellkultur & Verbrauchsmaterial



Diagnostik & molekulare Diagnostik



Laborgeräte & Service

Weitere Information auf den folgenden Seiten!  
See the following pages for more information!



### Lieferung & Zahlungsart

siehe unsere [Liefer- und Versandbedingungen](#)

### Zuschläge

- Mindermengenzuschlag
- Trockeneiszuschlag
- Gefahrgutzuschlag
- Expressversand

### SZABO-SCANDIC HandelsgmbH

Quellenstraße 110, A-1100 Wien

T. +43(0)1 489 3961-0

F. +43(0)1 489 3961-7

[mail@szabo-scandic.com](mailto:mail@szabo-scandic.com)

[www.szabo-scandic.com](http://www.szabo-scandic.com)

[linkedin.com/company/szaboscandic](https://www.linkedin.com/company/szaboscandic) 

## PPY (1-96) 293T Cell Transient Overexpression Lysate(Denatured)

Catalog # : H00005539-T03

規格 : [ 100 uL ]

List All

### Specification

**Transfected Cell Line:** 293T

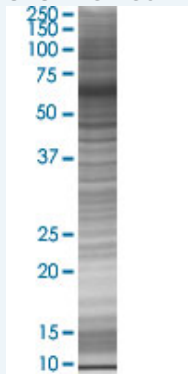
**Plasmid:** pCMV-PPY (1-96) partial fragment

**Host:** Human

**Theoretical MW (kDa):** 10.67

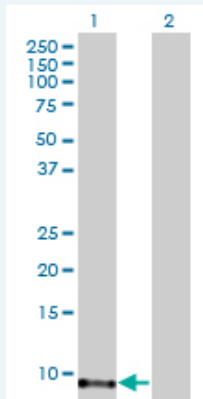
**Quality Control Testing:** Transient overexpression cell lysate was tested with Anti-PPY (1-96) antibody (H00005539-B02) by Western Blots.

#### SDS-PAGE Gel



PPY transfected lysate.

#### Western Blot



Lane 1: PPY transfected lysate ( 10.56 KDa)

Lane 2: Non-transfected lysate.

**Storage Buffer:** 1X Sample Buffer (50 mM Tris-HCl, 2% SDS, 10% glycerol, 300 mM 2-mercaptoethanol, 0.01% Bromophenol blue)

**Storage Instruction:** Store at -80°C. Aliquot to avoid repeated freezing and thawing.

### Applications

Western Blot

## Gene Information

---

**Entrez GeneID:** [5539](#)

---

**GeneBank  
Accession#:** [BC032225](#)

---

**Protein  
Accession#:** [AAH32225](#)

---

**Gene Name:** PPY

---

**Gene Alias:** PNP

---

**Gene  
Description:** pancreatic polypeptide

---

**Omim ID:** [167780](#)

---

**Gene Ontology:** [Hyperlink](#)

---

**Gene Summary:** This gene belongs to the NPY family and it encodes a protein that is synthesized as a 95 aa polypeptide precursor in the pancreatic islets of Langerhans. It is cleaved into two peptide products; the active hormone of 36 aa and an icosapeptide of unknown function. The hormone acts as a regulator of pancreatic and gastrointestinal functions and may be important in the regulation of food intake. Plasma level of this hormone has been shown to be reduced in conditions associated with increased food intake and elevated in anorexia nervosa. In addition, infusion of this hormone in obese rodents has shown to decrease weight gain. [provided by RefSeq]

---

**Other  
Designations:** pancreatic polypeptide Y

---

## Gene Pathway

---

[Neuroactive ligand-receptor interaction](#)

## Related Disease

---

[Diabetes Mellitus, Type 2](#) [Obesity](#) [Obesity](#)