



# SZABO SCANDIC

Part of Europa Biosite

## Produktinformation



Forschungsprodukte & Biochemikalien



Zellkultur & Verbrauchsmaterial



Diagnostik & molekulare Diagnostik



Laborgeräte & Service

Weitere Information auf den folgenden Seiten!  
See the following pages for more information!



### Lieferung & Zahlungsart

siehe unsere [Liefer- und Versandbedingungen](#)

### Zuschläge

- Mindermengenzuschlag
- Trockeneiszuschlag
- Gefahrgutzuschlag
- Expressversand

### SZABO-SCANDIC HandelsgmbH

Quellenstraße 110, A-1100 Wien

T. +43(0)1 489 3961-0

F. +43(0)1 489 3961-7

[mail@szabo-scandic.com](mailto:mail@szabo-scandic.com)

[www.szabo-scandic.com](http://www.szabo-scandic.com)

[linkedin.com/company/szaboscandic](https://www.linkedin.com/company/szaboscandic) 

**PRCP purified MaxPab rabbit polyclonal antibody (D01P)** MaxPab®

Catalog # : H00005547-D01P

規格 : [ 100 ug ]

[List All](#)

**Specification**

**Product Description:** Rabbit polyclonal antibody raised against a full-length human PRCP protein.

**Immunogen:** PRCP (NP\_005031.1, 1 a.a. ~ 496 a.a) full-length human protein.

**Sequence:**  
 MGRRALLLLLLSFLAPWATIALRPALRALGSLHLPTNPTSLPAVAKNYSVL  
 YFQQKVDHFGFNTVKTFNQRYL VADKYWKKNNGGSILFYTGNEGDIIWFC  
 NNTGFMWDVAEELKAMLVFAEHRYYGESLPGDNSFKDSRHLNFLTSE  
 QALADFAELIKHLKRTIPGAENQPVIAIGGSYGGMLAAWFRMKYPHMMVVG  
 ALAASAPIWQFEDLVPCGVFMKIVTDFRKS GPHCSESIHRSWDAINRLS  
 NTGSLQWLTGALHLCSP LTSQDIQHLKDWISETWVNLAMVDYPYASNF  
 LQPLPAWPIKVVQCQYLKPNVSDSLLLQNFQALNVYYNYSQQVKCLNISE  
 TATSSLGTLGWSYQACTEVVMPFCTNGVDDMFEPHSWNLKELSDDCF  
 QQWGVPRPSWITMYGGKNISSHTNIVF SNGELDPWSSGGVTKDITDT  
 LVAVTISEGAHHLDRRTKNALDPMSVLLARSLEVRHMKNWIRDFYDSAGK  
 QH

**Host:** Rabbit

**Reactivity:** Human

**Quality Control Testing:** Antibody reactive against mammalian transfected lysate.

**Storage Buffer:** In 1x PBS, pH 7.4

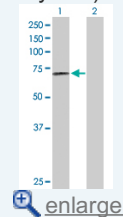
**Storage Instruction:** Store at -20°C or lower. Aliquot to avoid repeated freezing and thawing.

**MSDS:** [Download](#)

**Datasheet:** [Download](#)

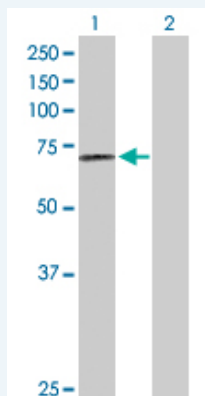
**Application Image**

Western Blot (Transfected lysate)



**Applications**

Western Blot (Transfected lysate)



Western Blot analysis of PRCP expression in transfected 293T cell line (H00005547-T02) by PRCP MaxPab polyclonal antibody.

Lane 1: PRCP transfected lysate(55.80 KDa).

## Gene Information

**Entrez GeneID:** [5547](#)

**GeneBank  
Accession#:** [NM\\_005040](#)

**Protein  
Accession#:** [NP\\_005031.1](#)

**Gene Name:** PRCP

**Gene Alias:** HUMPCP,MGC2202,PCP

**Gene  
Description:** prolylcarboxypeptidase (angiotensinase C)

**Omim ID:** [176785](#)

**Gene Ontology:** [Hyperlink](#)

**Gene Summary:** The protein encoded by this gene is a lysosomal prolylcarboxypeptidase, which cleaves C-terminal amino acids linked to proline in peptides such as angiotension II, III and des-Arg9-bradykinin. The cleavage occurs at acidic pH, but the enzyme activity is retained with some substrates at neutral pH. This enzyme has been shown to be an activator of the cell matrix-associated prekallikrein. The importance of angiotension II, one of the substrates of this enzyme, in regulating blood pressure and electrolyte balance suggests that this gene may be related to essential hypertension. Alternatively spliced transcript variants encoding distinct isoforms have been observed. [provided by RefSeq]

**Other  
Designations:** angiotensinase C,lysosomal Pro-x carboxypeptidase,lysosomal carboxypeptidase C,proline carboxypeptidase,prolylcarboxypeptidase,prolylcarboxypeptidase isoform 1 preproprotein

## Related Disease

[Cardiovascular Diseases](#) [Chronic Disease](#) [Diabetes Mellitus, Type 2](#) [Edema](#)  
[Genetic Diseases, Inborn](#) [Genetic Predisposition to Disease](#) [Hypertension](#) [Pre-Eclampsia](#)