



SZABO SCANDIC

Part of Europa Biosite

Produktinformation



Forschungsprodukte & Biochemikalien



Zellkultur & Verbrauchsmaterial



Diagnostik & molekulare Diagnostik



Laborgeräte & Service

Weitere Information auf den folgenden Seiten!
See the following pages for more information!



Lieferung & Zahlungsart

siehe unsere [Liefer- und Versandbedingungen](#)

Zuschläge

- Mindermengenzuschlag
- Trockeneiszuschlag
- Gefahrgutzuschlag
- Expressversand

SZABO-SCANDIC HandelsgmbH

Quellenstraße 110, A-1100 Wien

T. +43(0)1 489 3961-0

F. +43(0)1 489 3961-7

mail@szabo-scandic.com

www.szabo-scandic.com

[linkedin.com/company/szaboscandic](https://www.linkedin.com/company/szaboscandic) 



PRELP purified MaxPab mouse polyclonal antibody (B01P) MaxPab®

Catalog # : H00005549-B01P

規格 : [50 ug]

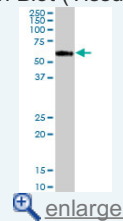
[List All](#)

Specification

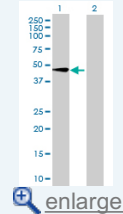
| | |
|---------------------------------|--|
| Product Description: | Mouse polyclonal antibody raised against a full-length human PRELP protein. |
| Immunogen: | PRELP (NP_002716.1, 1 a.a. ~ 382 a.a) full-length human protein. |
| Sequence: | MRSPLCWLLPLLILASVAQGQPTRRRPRPGTGPGRRRPRRPRPTPSFPQ PDEPAEPTDLPPPLPPGPPSIFPDCPRECYPDFPSALYCDSRNLKVP VIPPRIHYLYLQNNFITELPVESFQNTGLRWINLDNNRIRKIDQRVLEKLP GLVFLYMEKNQLEEVPSALPRNLEQLRLSQNHISRIPPGVFSKLENLLLD LQHNRLSDGVFKPDTFHGLKNLMQLNLAHNILRKMPPRVPTAIHQLYLDS NKIETIPNGYFKSFPNLAIFIRLNYNKLTDRGLPKNSFNISNLLVLHLSHNRI SVPAINNRLEHLNNSIEKINGTQICPNDLVAFHDFSSDLENVPHLRYLRL LDGNYLKPPIPLDLMMCFRLLQSVVI |
| Host: | Mouse |
| Reactivity: | Human |
| Quality Control Testing: | Antibody reactive against mammalian transfected lysate. |
| Storage Buffer: | In 1x PBS, pH 7.4 |
| Storage Instruction: | Store at -20°C or lower. Aliquot to avoid repeated freezing and thawing. |
| MSDS: |  Download |
| Datasheet: |  Download |

Application Image

Western Blot (Tissue lysate)

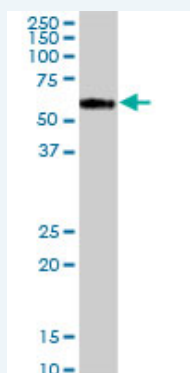


Western Blot (Transfected lysate)



Applications

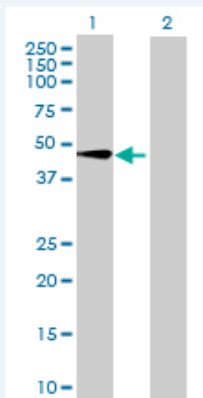
Western Blot (Tissue lysate)



PRELP MaxPab polyclonal antibody. Western Blot analysis of PRELP expression in human spleen.

 [Protocol Download](#)

Western Blot (Transfected lysate)



Western Blot analysis of PRELP expression in transfected 293T cell line ([H00005549-T02](#)) by PRELP MaxPab polyclonal antibody.

Lane 1: PRELP transfected lysate(42.02 KDa).
Lane 2: Non-transfected lysate.

Protocol Download

Gene Information

Entrez GeneID: [5549](#)

GeneBank Accession#: [NM_002725](#)

Protein Accession#: [NP_002716.1](#)

Gene Name: PRELP

Gene Alias: MGC45323,MST161,MSTP161,SLRR2A

Gene Description: proline/arginine-rich end leucine-rich repeat protein

Omim ID: [601914](#)

Gene Ontology: [Hyperlink](#)

Gene Summary: The protein encoded by this gene is a leucine-rich repeat protein present in connective tissue extracellular matrix. This protein functions as a molecule anchoring basement membranes to the underlying connective tissue. This protein has been shown to bind type I collagen to basement membranes and type II collagen to cartilage. It also binds the basement membrane heparan sulfate proteoglycan perlecan. This protein is suggested to be involved in the pathogenesis of Hutchinson-Gilford progeria (HGP), which is reported to lack the binding of collagen in basement membranes and cartilage. Alternatively spliced transcript variants encoding the same protein have been observed. [provided by RefSeq]

Other Designations: 55 kDa leucine-rich repeat protein of articular cartilage,OTTHUMP00000034099,prolargin proteoglycan,proline arginine-rich end leucine-rich repeat protein

Related Disease

[Genetic Predisposition to Disease Hypertension](#)