



SZABO SCANDIC

Part of Europa Biosite

Produktinformation



Forschungsprodukte & Biochemikalien



Zellkultur & Verbrauchsmaterial



Diagnostik & molekulare Diagnostik



Laborgeräte & Service

Weitere Information auf den folgenden Seiten!
See the following pages for more information!



Lieferung & Zahlungsart

siehe unsere [Liefer- und Versandbedingungen](#)

Zuschläge

- Mindermengenzuschlag
- Trockeneiszuschlag
- Gefahrgutzuschlag
- Expressversand

SZABO-SCANDIC HandelsgmbH

Quellenstraße 110, A-1100 Wien

T. +43(0)1 489 3961-0

F. +43(0)1 489 3961-7

mail@szabo-scandic.com

www.szabo-scandic.com

[linkedin.com/company/szaboscandic](https://www.linkedin.com/company/szaboscandic) 

PREP MaxPab mouse polyclonal antibody (B01) MaxPab®

Catalog # : H00005550-B01

規格 : [50 uL]

[List All](#)

Specification

Product Description: Mouse polyclonal antibody raised against a full-length human PREP protein.

Immunogen: PREP (NP_002717, 1 a.a. ~ 710 a.a) full-length human protein.

Sequence:
 MLSLQYPDVYRDETAVQDYHGHKICDPYAWLEDPDSEQTKAFVEAQNKI
 TVPFLEQCPIRGLYKERMTELYDPKYSCHF KKGKRYFYFYNTGLQNQR
 VLYVQDSLEGEARVFLDPNILSDDGTVALRGYAFSEDGEYFAYGLSASG
 SDWVTIKFMKVDGAKELPDVLERVKFSCMAWTHDGKGMFYNSYPQQD
 GKSDGTETSTNLHQKLYYHVLGTDQSEDILCAEFDPDEPKWMGGAELSD
 DGRYVLLSIREGCDPVNRLWYCDLQQESSGIAGILKWWKLIDNFEGEYDY
 VTNEGTVFTFKTNRQSPNYRVINIDFRDPEESKWKVLVPEHEKDVLEWIA
 CVRSNFLVLCYLHDVKNILQLHDLTTGALLKTFPLDVGSIVGYSGQKKDT
 EIFYQFTSFLSPGIYHCDLTKEELEPRVFREVTVKGIDASDYQTVQIFYPS
 KDGTKIPMFIVHKKGIKLDGSHPAFLYGYGGFNISITPNYSVSRILFVRHMG
 GILAVANIRGGGEYGETWHKGGILANKQNCDFDFQCAAELYKEGYTSPK
 RLTINGGSNGGLLVAACANQRPDFGCVIAQVGVMDMLKFHKYTIGHAW
 TTDYGCSDSKQHFEWLVKYSPLHNKLP EADDIQYPSMLLLTADHDDR
 VPLHSLKFIATLQYIVGRSRKQSNPLLIHVDTKAGHGAGKPTAKVIEEVSD
 MFAFIARCLNVDWIP

Host: Mouse

Reactivity: Human

Quality Control Testing: Antibody reactive against mammalian transfected lysate.

Storage Buffer: No additive

Storage Instruction: Store at -20°C or lower. Aliquot to avoid repeated freezing and thawing.

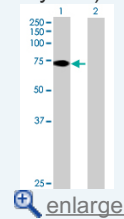
Note: For IHC and IF applications, antibody purification with Protein A will be needed prior to use.

MSDS:  [Download](#)

Datasheet:  [Download](#)

Application Image

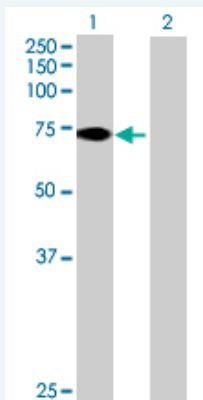
Western Blot (Transfected lysate)



 [enlarge](#)

Applications

Western Blot (Transfected lysate)



Western Blot analysis of PREP expression in transfected 293T cell line ([H00005550-T01](#)) by PREP MaxPab polyclonal antibody.

Lane 1: PREP transfected lysate(78.1 KDa).

Lane 2: Non-transfected lysate.

 [Protocol Download](#)

Gene Information

Entrez GeneID: [5550](#)

GeneBank [NM_002726](#)

Accession#:

Protein [NP_002717](#)

Accession#:

Gene Name: PREP

Gene Alias: MGC16060,PE,PEP

Gene prolyl endopeptidase

Description:

Omim ID: [600400](#)

Gene Ontology: [Hyperlink](#)

Gene Summary: The protein encoded by this gene is a cytosolic prolyl endopeptidase that cleaves peptide bonds on the C-terminal side of prolyl residues within peptides that are up to approximately 30 amino acids long. Prolyl endopeptidases have been reported to be involved in the maturation and degradation of peptide hormones and neuropeptides. [provided by RefSeq]

Other Designations: OTTHUMP00000016916,OTTHUMP00000040498,dJ355L5.1 (prolyl endopeptidase),post-proline cleaving enzyme,prolyl oligopeptidase

Related Disease

[Anorexia Nervosa](#) [Bipolar Disorder](#) [Bulimia](#) [Diabetes Mellitus, Type 2](#)
[Genetic Predisposition to Disease](#) [Tobacco Use Disorder](#)