



# SZABO SCANDIC

Part of Europa Biosite

## Produktinformation



Forschungsprodukte & Biochemikalien



Zellkultur & Verbrauchsmaterial



Diagnostik & molekulare Diagnostik



Laborgeräte & Service

Weitere Information auf den folgenden Seiten!  
See the following pages for more information!



### Lieferung & Zahlungsart

siehe unsere [Liefer- und Versandbedingungen](#)

### Zuschläge

- Mindermengenzuschlag
- Trockeneiszuschlag
- Gefahrgutzuschlag
- Expressversand

### SZABO-SCANDIC HandelsgmbH

Quellenstraße 110, A-1100 Wien

T. +43(0)1 489 3961-0

F. +43(0)1 489 3961-7

[mail@szabo-scandic.com](mailto:mail@szabo-scandic.com)

[www.szabo-scandic.com](http://www.szabo-scandic.com)

[linkedin.com/company/szaboscandic](https://www.linkedin.com/company/szaboscandic) 

**PREP purified MaxPab mouse polyclonal antibody (B01P)** MaxPab®

Catalog # : H00005550-B01P

規格 : [ 50 ug ]

[List All](#)

**Specification**

**Product Description:** Mouse polyclonal antibody raised against a full-length human PREP protein.

**Immunogen:** PREP (NP\_002717.3, 1 a.a. ~ 710 a.a) full-length human protein.

**Sequence:**  
 M L S L Q Y P D V Y R D E T A V Q D Y H G H K I C D P Y A W L E D P D S E Q T K A F V E A Q N K I  
 T V P F L E Q C P I R G L Y K E R M T E L Y D Y P K Y S C H F K K G K R Y F Y F Y N T G L Q N Q R  
 V L Y V Q D S L E G E A R V F L D P N I L S D D G T V A L R G Y A F S E D G E Y F A Y G L S A S G  
 S D W W T I K F M K V D G A K E L P D V L E R V K F S C M A W T H D G K G M F Y N S Y P Q Q D  
 G K S D G T E T S T N L H Q K L Y Y H L G T D Q S E D I L C A E F P D E P K W M G G A E L S D  
 D G R Y V L L S I R E G C D P V N R L W Y C D L Q Q E S S G I A G I L K W W K L I D N F E G E Y D Y  
 V T N E G T V F T F K T N R Q S P N Y R V I N I D F R D P E E S K W K V L V P E H E K D V L E W I A  
 C V R S N F L V L C Y L H D V K N I L Q L H D L T T G A L L K T F P L D V G S I V G Y S G Q K K D T  
 E I F Y Q F T S F L S P G I I Y H C D L T K E E L E P R V F R E V T V K G I D A S D Y Q T V Q I F Y P S  
 K D G T K I P M F I V H K K G I K L D G S H P A F L Y G Y G G F N I S I T P N Y S V S R L I F V R H M G  
 G I L A V A N I R G G G E Y G E T W H K G G I L A N K Q N C F D D F Q C A A E Y L I K E G Y T S P K  
 R L T I N G G S N G G L L V A A C A N Q R P D L F G C V I A Q V G V M D M L K F H K Y T I G H A W  
 T T D Y G C S D S K Q H F E W L V K Y S P L H N V K L P E A D D I Q Y P S M L L L T A D H D D R V  
 V P L H S L K F I A T L Q Y I V G R S R K Q S N P L L I H V D T K A G H G A G K P T A K V I E E V S D  
 M F A F I A R C L N V D W I P

**Host:** Mouse

**Reactivity:** Human

**Quality Control Testing:** Antibody reactive against mammalian transfected lysate.

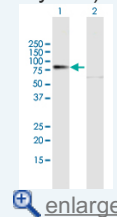
**Storage Buffer:** In 1x PBS, pH 7.4


**Storage Instruction:** Store at -20°C or lower. Aliquot to avoid repeated freezing and thawing.

**Datasheet:**  [Download](#)

**Application Image**

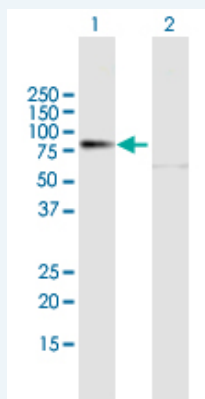
Western Blot (Transfected lysate)



 [enlarge](#)

**Applications**

Western Blot (Transfected lysate)



Western Blot analysis of PREP expression in transfected 293T cell line (H00005550-T01) by PREP MaxPab polyclonal antibody.

Lane 1: PREP transfected lysate(78.1 KDa).  
Lane 2: Non-transfected lysate.

 [Protocol Download](#)

---

### Gene Information

---

**Entrez GeneID:** [5550](#)

**GeneBank  
Accession#:** [NM\\_002726.3](#)

**Protein  
Accession#:** [NP\\_002717.3](#)

**Gene Name:** PREP

**Gene Alias:** MGC16060,PE,PEP

**Gene  
Description:** prolyl endopeptidase

**Omim ID:** [600400](#)

**Gene Ontology:** [Hyperlink](#)

**Gene Summary:** The protein encoded by this gene is a cytosolic prolyl endopeptidase that cleaves peptide bonds on the C-terminal side of prolyl residues within peptides that are up to approximately 30 amino acids long. Prolyl endopeptidases have been reported to be involved in the maturation and degradation of peptide hormones and neuropeptides. [provided by RefSeq]

**Other  
Designations:** OTTHUMP00000016916,OTTHUMP00000040498,dJ355L5.1 (prolyl endopeptidase),post-proline cleaving enzyme,prolyl oligopeptidase

---

### Related Disease

---

[Anorexia Nervosa](#) [Bipolar Disorder](#) [Bulimia](#) [Diabetes Mellitus, Type 2](#)  
[Genetic Predisposition to Disease](#) [Tobacco Use Disorder](#)

---

[服務條款](#) | [隱私權政策](#) | [著作及商標](#) | [網站地圖](#)

©2016 亞諾法生技股份有限公司 Abnova Corporation. 版權所有.