



SZABO SCANDIC

Part of Europa Biosite

Produktinformation



Forschungsprodukte & Biochemikalien



Zellkultur & Verbrauchsmaterial



Diagnostik & molekulare Diagnostik



Laborgeräte & Service

Weitere Information auf den folgenden Seiten!
See the following pages for more information!



Lieferung & Zahlungsart

siehe unsere [Liefer- und Versandbedingungen](#)

Zuschläge

- Mindermengenzuschlag
- Trockeneiszuschlag
- Gefahrgutzuschlag
- Expressversand

SZABO-SCANDIC HandelsgmbH

Quellenstraße 110, A-1100 Wien

T. +43(0)1 489 3961-0

F. +43(0)1 489 3961-7

mail@szabo-scandic.com

www.szabo-scandic.com

[linkedin.com/company/szaboscandic](https://www.linkedin.com/company/szaboscandic) 

PREP 293T Cell Transient Overexpression Lysate(Denatured)

Catalog # : H00005550-T01

規格 : [100 uL]

List All

Specification

Transfected Cell Line: 293T

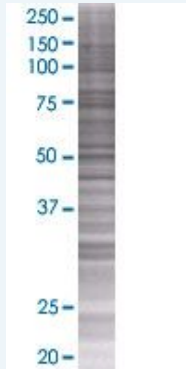
Plasmid: pCMV-PREP full-length

Host: Human

Theoretical MW (kDa): 80.7

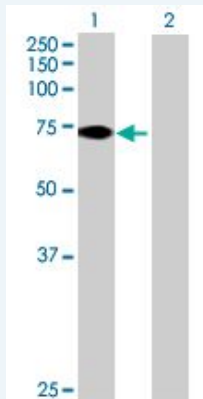
Quality Control Testing: Transient overexpression cell lysate was tested with Anti-PREP antibody (H00005550-B01) by Western Blots.

SDS-PAGE Gel



PREP transfected lysate.

Western Blot



Lane 1: PREP transfected lysate (80.7 KDa)

Lane 2: Non-transfected lysate.

Storage Buffer: 1X Sample Buffer (50 mM Tris-HCl, 2% SDS, 10% glycerol, 300 mM 2-mercaptoethanol, 0.01% Bromophenol blue)

Storage Instruction: Store at -80°C. Aliquot to avoid repeated freezing and thawing.

MSDS:  [Download](#)

Applications

Application Image

Western Blot

Western Blot

Gene Information

Entrez GeneID: [5550](#)

GeneBank Accession#: [NM_002726](#)

Protein Accession#: [NP_002717](#)

Gene Name: PREP

Gene Alias: MGC16060,PE,PEP

Gene Description: prolyl endopeptidase

Omim ID: [600400](#)

Gene Ontology: [Hyperlink](#)

Gene Summary: The protein encoded by this gene is a cytosolic prolyl endopeptidase that cleaves peptide bonds on the C-terminal side of prolyl residues within peptides that are up to approximately 30 amino acids long. Prolyl endopeptidases have been reported to be involved in the maturation and degradation of peptide hormones and neuropeptides. [provided by RefSeq]

Other Designations: OTTHUMP00000016916,OTTHUMP00000040498,dJ355L5.1 (prolyl endopeptidase),post-proline cleaving enzyme,prolyl oligopeptidase

Related Disease

[Anorexia Nervosa](#) [Bipolar Disorder](#) [Bulimia](#) [Diabetes Mellitus, Type 2](#)
[Genetic Predisposition to Disease](#) [Tobacco Use Disorder](#)

[服務條款](#) | [隱私權政策](#) | [著作及商標](#) | [網站地圖](#)

©2016 亞諾法生技股份有限公司 Abnova Corporation. 版權所有.