



# SZABO SCANDIC

Part of Europa Biosite

## Produktinformation



Forschungsprodukte & Biochemikalien



Zellkultur & Verbrauchsmaterial



Diagnostik & molekulare Diagnostik



Laborgeräte & Service

Weitere Information auf den folgenden Seiten!  
See the following pages for more information!



### Lieferung & Zahlungsart

siehe unsere [Liefer- und Versandbedingungen](#)

### Zuschläge

- Mindermengenzuschlag
- Trockeneiszuschlag
- Gefahrgutzuschlag
- Expressversand

### SZABO-SCANDIC HandelsgmbH

Quellenstraße 110, A-1100 Wien

T. +43(0)1 489 3961-0

F. +43(0)1 489 3961-7

[mail@szabo-scandic.com](mailto:mail@szabo-scandic.com)

[www.szabo-scandic.com](http://www.szabo-scandic.com)

[linkedin.com/company/szaboscandic](https://www.linkedin.com/company/szaboscandic) 



**PRF1 purified MaxPab mouse polyclonal antibody (B01P)** MaxPab®

Catalog # : H00005551-B01P

規格 : [ 50 ug ]

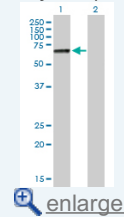
[List All](#)

**Specification**

<b>Product Description:</b>	Mouse polyclonal antibody raised against a full-length human PRF1 protein.
<b>Immunogen:</b>	PRF1 (NP_005032.2, 1 a.a. ~ 555 a.a) full-length human protein.
<b>Sequence:</b>	MAARLLLLGILLLLPLPVPAPCHTAARSECKRSHKFVPGAWLAGEGVDV TSLRRSGSFPVDTQRFLRPDGTCTLCENALQEGTLQRLPLALTNWRAQ GSGCQRHVTRAKVSSTEAVARDAARSIRNDWKVGLDVTPKPSTSNVHVS VAGSHSQAANFAAQKTHQDQYSFSTDTVECRFYSFHWHTPPLHPDFK RALGDLPHHFNASTQPAYLRLISNYGTHFIRAVELGGRISALTALRTCELA LEGLTDNEVEDCLTVEAQVNIHGHSISAEAKACEEKKKKHKMTASFHQTY RERHSEVVGGHHTSINDLLFGIQAGPEQYSAWVNSLPGSPGLVDYTLPEP LHVLLDSQDPRREALRRALSQYLTDRARWRDCSRPCPPGRQKSPRDP CQCVCCHGSAVTTQDCCPRQRGLAQLEVTFIQAWGLWGDWFTATDAYV KLFFGGQELRTSTVWDNNPIWSVRLDFGDVLLATGGPLRLQVWDQD SGRDDLLGTCDQAPKSGSHEVRCNLNHGHLKFRYHARCLPHLGGGTC LDYVPQMLLGEPPGNRSGAWW
<b>Host:</b>	Mouse
<b>Reactivity:</b>	Human
<b>Quality Control Testing:</b>	Antibody reactive against mammalian transfected lysate.
<b>Storage Buffer:</b>	In 1x PBS, pH 7.4
<b>Storage Instruction:</b>	Store at -20°C or lower. Aliquot to avoid repeated freezing and thawing.
<b>MSDS:</b>	 <a href="#">Download</a>
<b>Datasheet:</b>	 <a href="#">Download</a>

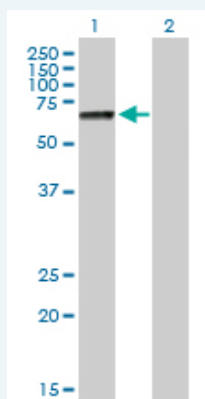
**Application Image**

Western Blot (Transfected lysate)



**Applications**

Western Blot (Transfected lysate)



Western Blot analysis of PRF1 expression in transfected 293T cell line ([H00005551-T02](#)) by PRF1 MaxPab polyclonal antibody.

Lane 1: PRF1 transfected lysate(61.05 kDa).  
Lane 2: Non-transfected lysate.

 [Protocol Download](#)

---

## Gene Information

---

**Entrez GeneID:** [5551](#)

**GeneBank Accession#:** [NM\\_005041](#)

**Protein Accession#:** [NP\\_005032.2](#)

**Gene Name:** PRF1

**Gene Alias:** FLH2,HPLH2,MGC65093,P1,PFN1,PPF

**Gene Description:** perforin 1 (pore forming protein)

**Omim ID:** [170280](#), [603553](#), [605027](#)

**Gene Ontology:** [Hyperlink](#)

**Gene Summary:** The protein encoded by this gene has structural and functional similarities to complement component 9 (C9). Like C9, this protein creates transmembrane tubules and is capable of lysing non-specifically a variety of target cells. This protein is one of the main cytolytic proteins of cytolytic granules, and it is known to be a key effector molecule for T-cell- and natural killer-cell-mediated cytotoxicity. Defects in this gene cause familial hemophagocytic lymphohistiocytosis type 2 (HPLH2), a rare and lethal autosomal recessive disorder of early childhood. Alternative splicing results in multiple transcript variants encoding the same protein. [provided by RefSeq]

**Other Designations:** OTTHUMP00000019759,cytolysin,lymphocyte pore forming protein,perforin 1

---

## Gene Pathway

---

[Allograft rejection](#) [Autoimmune thyroid disease](#) [Graft-versus-host disease](#)  
[Natural killer cell mediated cytotoxicity](#) [Type I diabetes mellitus](#)

---

## Related Disease

---

[Alzheimer Disease](#) [Arthritis, Juvenile Rheumatoid](#) [Asthma](#) [Asthma](#) [Autoimmune Diseases](#)  
[Bronchiolitis, Viral](#) [Diabetes Mellitus, Type 1](#) [Disease Progression](#)  
[Epstein-Barr Virus Infections](#) [Genetic Predisposition to Disease](#) [HIV Infections](#)  
[HTLV-I Infections](#) [Infant, Premature, Diseases](#) [Leukemia, B-Cell, Acute](#)  
[Leukemia, Lymphocytic, Acute, L1](#) [Lymphohistiocytosis, Hemophagocytic](#)  
[Lymphoma, Large-Cell, Ki-1](#) [Lymphoproliferative Disorders](#)  
[Macrophage Activation Syndrome](#)

... see more