



# SZABO SCANDIC

Part of Europa Biosite

## Produktinformation



Forschungsprodukte & Biochemikalien



Zellkultur & Verbrauchsmaterial



Diagnostik & molekulare Diagnostik



Laborgeräte & Service

Weitere Information auf den folgenden Seiten!  
See the following pages for more information!



### Lieferung & Zahlungsart

siehe unsere [Liefer- und Versandbedingungen](#)

### Zuschläge

- Mindermengenzuschlag
- Trockeneiszuschlag
- Gefahrgutzuschlag
- Expressversand

### SZABO-SCANDIC HandelsgmbH

Quellenstraße 110, A-1100 Wien

T. +43(0)1 489 3961-0

F. +43(0)1 489 3961-7

[mail@szabo-scandic.com](mailto:mail@szabo-scandic.com)

[www.szabo-scandic.com](http://www.szabo-scandic.com)

[linkedin.com/company/szaboscandic](https://www.linkedin.com/company/szaboscandic) 

## PRKAA2 monoclonal antibody (M02), clone 1G8

Catalog # : H00005563-M02

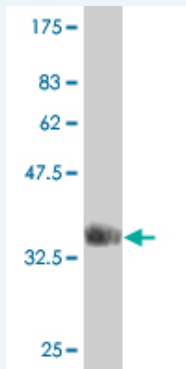
規格 : [ 100 ug ]

[List All](#)

### Specification

<b>Product Description:</b>	Mouse monoclonal antibody raised against a partial recombinant PRKAA2.
<b>Immunogen:</b>	PRKAA2 (NP_006243, 453 a.a. ~ 552 a.a) partial recombinant protein with GST tag. MW of the GST tag alone is 26 KDa.
<b>Sequence:</b>	MSLQLYLVDNRSYLLDFKSIDDEVEQRSGSSTPQRSCSAAGLHRPRSS FDSTTAESHLSGSLTGSLTGSTLSSVSPRLGSHTMDFEFMCASLITTLA R
<b>Host:</b>	Mouse
<b>Reactivity:</b>	Human
<b>Isotype:</b>	IgG2a Kappa

**Quality Control Testing:** Antibody Reactive Against Recombinant Protein.



Western Blot detection against Immunogen (36.74 KDa) .

**Storage Buffer:** In 1x PBS, pH 7.4

**Storage Instruction:** Store at -20°C or lower. Aliquot to avoid repeated freezing and thawing.

**MSDS:** [Download](#)

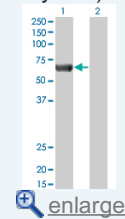
**Datasheet:** [Download](#)

### Applications

Western Blot (Transfected lysate)

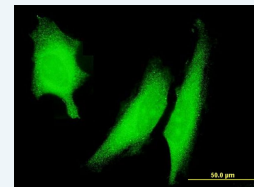
### Application Image

Western Blot (Transfected lysate)

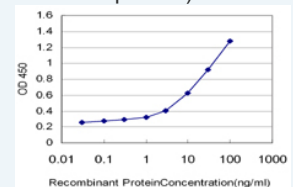


Western Blot (Recombinant protein)

Immunofluorescence

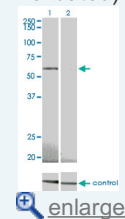


Sandwich ELISA (Recombinant protein)

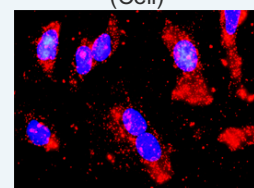


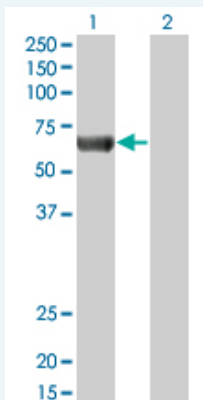
ELISA

RNAi Knockdown (Antibody validated)



In situ Proximity Ligation Assay (Cell)





Western Blot analysis of PRKAA2 expression in transfected 293T cell line by PRKAA2 monoclonal antibody (M02), clone 1G8.

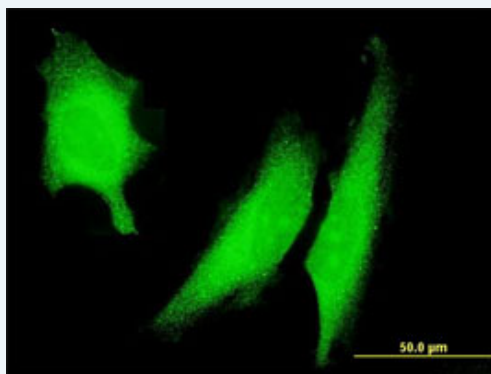
Lane 1: PRKAA2 transfected lysate(62.3 KDa).  
Lane 2: Non-transfected lysate.

[Protocol Download](#)

### Western Blot (Recombinant protein)

[Protocol Download](#)

### Immunofluorescence

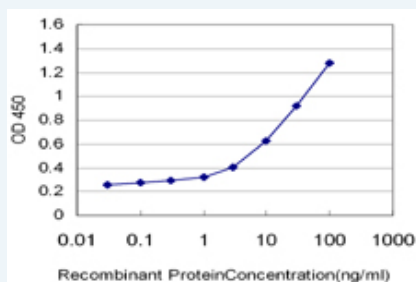


[enlarge this image](#)

Immunofluorescence of monoclonal antibody to PRKAA2 on HeLa cell . [antibody concentration 10 ug/ml]

[Protocol Download](#)

### Sandwich ELISA (Recombinant protein)

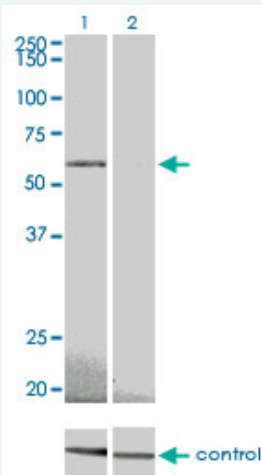


Detection limit for recombinant GST tagged PRKAA2 is approximately 0.03ng/ml as a capture antibody.

[Protocol Download](#)

### ELISA

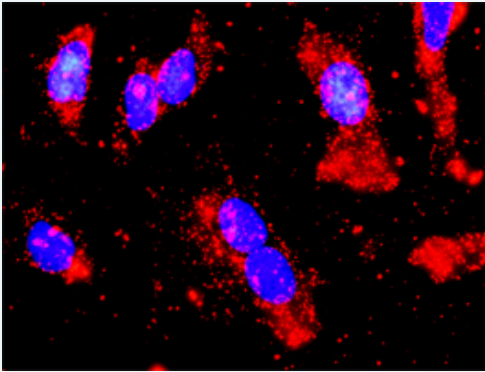
### RNAi Knockdown (Antibody validated)



Western blot analysis of PRKAA2 over-expressed 293 cell line, cotransfected with PRKAA2 Validated Chimera RNAi ( Cat # H00005563-R01V ) (Lane 2) or non-transfected control (Lane 1). Blot probed with PRKAA2 monoclonal antibody (M02) clone 1G8 (Cat # H00005563-M02 ). GAPDH ( 36.1 kDa ) used as specificity and loading control.

 [Protocol Download](#)

### ***In situ* Proximity Ligation Assay (Cell)**



Proximity Ligation Analysis of protein-protein interactions between STK11 and PRKAA2. HeLa cells were stained with anti-STK11 rabbit purified polyclonal 1:1200 and anti-PRKAA2 mouse monoclonal antibody 1:50. Each red dot represents the detection of protein-protein interaction complex, and nuclei were counterstained with DAPI (blue).

### **Gene Information**

**Entrez GeneID:** [5563](#)

**GeneBank** [NM\\_006252](#)  
**Accession#:**

**Protein** [NP\\_006243](#)  
**Accession#:**

**Gene Name:** PRKAA2

**Gene Alias:** AMPK,AMPK2,PRKAA

**Gene Description:** protein kinase, AMP-activated, alpha 2 catalytic subunit

**Omim ID:** [600497](#)

**Gene Ontology:** [Hyperlink](#)

**Gene Summary:** The protein encoded by this gene is a catalytic subunit of the AMP-activated protein kinase (AMPK). AMPK is a heterotrimer consisting of an alpha catalytic subunit, and non-catalytic beta and gamma subunits. AMPK is an important energy-sensing enzyme that monitors cellular energy status. In response to cellular metabolic stresses, AMPK is

activated, and thus phosphorylates and inactivates acetyl-CoA carboxylase (ACC) and beta-hydroxy beta-methylglutaryl-CoA reductase (HMGCR), key enzymes involved in regulating de novo biosynthesis of fatty acid and cholesterol. Studies of the mouse counterpart suggest that this catalytic subunit may control whole-body insulin sensitivity and is necessary for maintaining myocardial energy homeostasis during ischemia. [provided by RefSeq]

---

**Other Designations:** 5'-AMP-activated protein kinase, catalytic alpha-2 chain, AMP-activated protein kinase alpha 2 catalytic subunit, AMPK-alpha-2 chain, OTTHUMP0000009993

---

### Gene Pathway

---

[Adipocytokine signaling pathway](#) [Hypertrophic cardiomyopathy \(HCM\)](#)  
[Insulin signaling pathway](#) [mTOR signaling pathway](#) [Regulation of autophagy](#)

### Related Disease

---

[Atherosclerosis](#) [Calcinosis](#) [Cardiovascular Diseases](#) [Coronary Artery Disease](#)  
[Diabetes Mellitus](#) [Diabetes Mellitus, Type 2](#) [Drug Toxicity](#) [Edema](#)  
[Genetic Predisposition to Disease](#) [Hypercholesterolemia](#) [Insulin Resistance](#)

---

[服務條款](#) | [隱私權政策](#) | [著作及商標](#) | [網站地圖](#)

©2016 亞諾法生技股份有限公司 Abnova Corporation. 版權所有.