



# SZABO SCANDIC

Part of Europa Biosite

## Produktinformation



Forschungsprodukte & Biochemikalien



Zellkultur & Verbrauchsmaterial



Diagnostik & molekulare Diagnostik



Laborgeräte & Service

Weitere Information auf den folgenden Seiten!  
See the following pages for more information!



### Lieferung & Zahlungsart

siehe unsere [Liefer- und Versandbedingungen](#)

### Zuschläge

- Mindermengenzuschlag
- Trockeneiszuschlag
- Gefahrgutzuschlag
- Expressversand

### SZABO-SCANDIC HandelsgmbH

Quellenstraße 110, A-1100 Wien

T. +43(0)1 489 3961-0

F. +43(0)1 489 3961-7

[mail@szabo-scandic.com](mailto:mail@szabo-scandic.com)

[www.szabo-scandic.com](http://www.szabo-scandic.com)

[linkedin.com/company/szaboscandic](https://www.linkedin.com/company/szaboscandic) 



## PRKAB2 MaxPab mouse polyclonal antibody (B01) MaxPab®

Catalog # : H00005565-B01

規格 : [ 50 uL ]

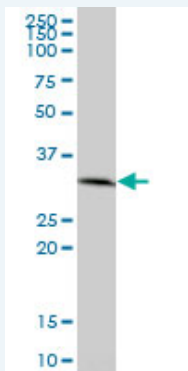
[List All](#)

### Specification

|                                 |  |
|---------------------------------|--|
| <b>Product Description:</b>     | Mouse polyclonal antibody raised against a full-length human PRKAB2 protein.   |
| <b>Immunogen:</b>               | PRKAB2 (NP_005390, 1 a.a. ~ 272 a.a) full-length human protein.  |
| <b>Sequence:</b>                | MGNTTSDRVSGERHGAKAARSEGAGGHAPGKEHKIMVGSTDDPSVFSL<br>PDSKLPDGKEFVSWQQDLEDSVKPTQQARPTVIRWSEGGKEVFISGSF<br>NNWSTKIPLIKSHNDFVAILDLPEGEHQYKFFVDGQWVHDPSEPVVTSQL<br>GTINNLIHVKKSDFEVFDALKLDSMESSETSCRDLSSPPGPYQEMYAF<br>RSEERFKSPILPPHLLQVILNKDTNISCDPALLPEPNIHVMLNHLIALSIKDS<br>VMVLSATHRYKKKYVTTLLYKPI |
| <b>Host:</b>                    | Mouse  |
| <b>Reactivity:</b>              | Human  |
| <b>Quality Control Testing:</b> | Antibody reactive against mammalian transfected lysate.  |
| <b>Storage Buffer:</b>          | No additive  |
| <b>Storage Instruction:</b>     | Store at -20°C or lower. Aliquot to avoid repeated freezing and thawing.   |
| <b>Note:</b>                    | For IHC and IF applications, antibody purification with Protein A will be needed prior to use.   |
| <b>MSDS:</b>                    |  <a href="#">Download</a>   |
| <b>Datasheet:</b>               |  <a href="#">Download</a>   |

### Applications

#### Western Blot (Tissue lysate)



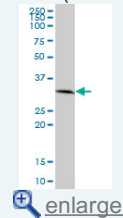
PRKAB2 MaxPab polyclonal antibody. Western Blot analysis of PRKAB2 expression in human liver.

 [Protocol Download](#)

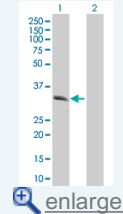
#### Western Blot (Transfected lysate)

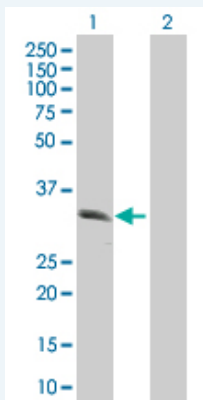
### Application Image

#### Western Blot (Tissue lysate)



#### Western Blot (Transfected lysate)





Western Blot analysis of PRKAB2 expression in transfected 293T cell line ([H00005565-T01](#)) by PRKAB2 MaxPab polyclonal antibody.

Lane 1: PRKAB2 transfected lysate(29.92 KDa).  
Lane 2: Non-transfected lysate.

Protocol Download

## Gene Information

**Entrez GeneID:** [5565](#)

**GeneBank** [NM\\_005399](#)

**Accession#:**

**Protein** [NP\\_005390](#)

**Accession#:**

**Gene Name:** PRKAB2

**Gene Alias:** MGC61468

**Gene Description:** protein kinase, AMP-activated, beta 2 non-catalytic subunit

**Omim ID:** [602741](#)

**Gene Ontology:** [Hyperlink](#)

**Gene Summary:** The protein encoded by this gene is a regulatory subunit of the AMP-activated protein kinase (AMPK). AMPK is a heterotrimer consisting of an alpha catalytic subunit, and non-catalytic beta and gamma subunits. AMPK is an important energy-sensing enzyme that monitors cellular energy status. In response to cellular metabolic stresses, AMPK is activated, and thus phosphorylates and inactivates acetyl-CoA carboxylase (ACC) and beta-hydroxy beta-methylglutaryl-CoA reductase (HMGCR), key enzymes involved in regulating de novo biosynthesis of fatty acid and cholesterol. This subunit may be a positive regulator of AMPK activity. It is highly expressed in skeletal muscle and thus may have tissue-specific roles. [provided by RefSeq]

**Other Designations:** 5'-AMP-activated protein kinase, beta-2 subunit,AMP-activated protein kinase beta 2 non-catalytic subunit,AMPK beta 2,AMPK beta-2 chain,OTTHUMP00000015910

## Gene Pathway

[Adipocytokine signaling pathway Hypertrophic cardiomyopathy \(HCM\)](#)  
[Insulin signaling pathway](#)

## Related Disease

[Alzheimer Disease](#) [Alzheimer disease](#) [Atherosclerosis](#) [Calcinosis](#) [Cardiovascular Diseases](#)  
[Coronary Artery Disease](#) [Diabetes Complications](#) [Diabetes Mellitus](#)  
[Diabetes Mellitus, Type 2](#) [Drug Toxicity](#) [Edema](#) [Genetic Predisposition to Disease](#)

---

[服務條款](#) | [隱私權政策](#) | [著作及商標](#) | [網站地圖](#)

©2016 亞諾法生技股份有限公司 Abnova Corporation. 版權所有.