



SZABO SCANDIC

Part of Europa Biosite

Produktinformation



Forschungsprodukte & Biochemikalien



Zellkultur & Verbrauchsmaterial



Diagnostik & molekulare Diagnostik



Laborgeräte & Service

Weitere Information auf den folgenden Seiten!
See the following pages for more information!



Lieferung & Zahlungsart

siehe unsere [Liefer- und Versandbedingungen](#)

Zuschläge

- Mindermengenzuschlag
- Trockeneiszuschlag
- Gefahrgutzuschlag
- Expressversand

SZABO-SCANDIC HandelsgmbH

Quellenstraße 110, A-1100 Wien

T. +43(0)1 489 3961-0

F. +43(0)1 489 3961-7

mail@szabo-scandic.com

www.szabo-scandic.com

[linkedin.com/company/szaboscandic](https://www.linkedin.com/company/szaboscandic) 

PRKACA monoclonal antibody (M02), clone 1D7

Catalog # : H00005566-M02

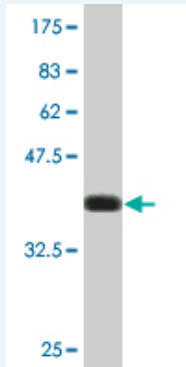
規格 : [100 ug]

[List All](#)

Specification

Product Description:	Mouse monoclonal antibody raised against a partial recombinant PRKACA.
Immunogen:	PRKACA (AAH39846, 1 a.a. ~ 120 a.a) partial recombinant protein with GST tag. MW of the GST tag alone is 26 KDa.
Sequence:	MGNAAAAKKGSSEQESVKEFLAKAKEDFLKKWESPAQNTAHLDDQFERIKT LGTGSFGRVMLVKHKETGNHYAMKILDKQKVVKLKQIEHTLNEKRILQAV NFPFLVKLEFSFKDNSNLYMV
Host:	Mouse
Reactivity:	Human
Isotype:	IgG1 Kappa

Quality Control Testing: Antibody Reactive Against Recombinant Protein.



Western Blot detection against Immunogen (38.94 KDa) .

Storage Buffer: In 1x PBS, pH 7.4

Storage Instruction: Store at -20°C or lower. Aliquot to avoid repeated freezing and thawing.

MSDS: [Download](#)

Datasheet: [Download](#)

Applications

Western Blot (Recombinant protein)

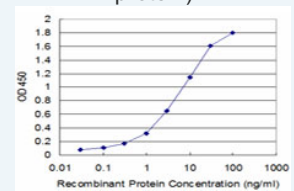
[Protocol Download](#)

Sandwich ELISA (Recombinant protein)

Application Image

Western Blot (Recombinant protein)

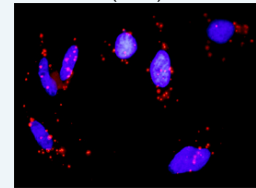
Sandwich ELISA (Recombinant protein)



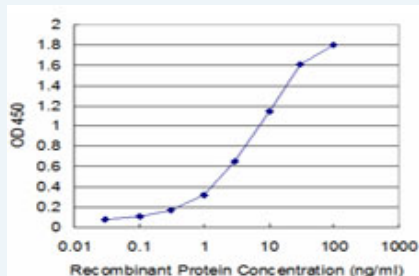
[enlarge](#)

ELISA


In situ Proximity Ligation Assay (Cell)



[enlarge](#)

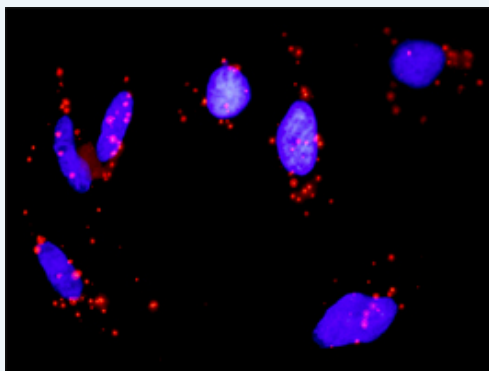


Detection limit for recombinant GST tagged PRKACA is approximately 0.1ng/ml as a capture antibody.

 [Protocol Download](#)

ELISA

In situ Proximity Ligation Assay (Cell)



Proximity Ligation Analysis of protein-protein interactions between MAP3K3 and PRKACA. HeLa cells were stained with anti-MAP3K3 rabbit purified polyclonal 1:1200 and anti-PRKACA mouse monoclonal antibody 1:50. Each red dot represents the detection of protein-protein interaction complex, and nuclei were counterstained with DAPI (blue).

Gene Information

Entrez GeneID: [5566](#)

GeneBank [BC039846](#)

Accession#:

Protein [AAH39846](#)

Accession#:

Gene Name: PRKACA

Gene Alias: MGC102831,MGC48865,PKACA

Gene Description: protein kinase, cAMP-dependent, catalytic, alpha

Description:

Omim ID: [601639](#)

Gene Ontology: [Hyperlink](#)

Gene Summary: cAMP is a signaling molecule important for a variety of cellular functions. cAMP exerts its effects by activating the cAMP-dependent protein kinase, which transduces the signal through phosphorylation of different target proteins. The inactive kinase holoenzyme is a tetramer composed of two regulatory and two catalytic subunits. cAMP causes the dissociation of the inactive holoenzyme into a dimer of regulatory subunits bound to four cAMP and two free monomeric catalytic subunits. Four different regulatory subunits and three catalytic subunits have been identified in humans. The protein encoded by this gene is a member of the Ser/Thr protein kinase family and is a catalytic subunit of cAMP-dependent protein kinase. Alternatively spliced transcript variants encoding distinct isoforms have been observed. [provided by RefSeq

Other PKA C-alpha,cAMP-dependent protein kinase catalytic subunit
Designations: alpha,cAMP-dependent protein kinase catalytic subunit alpha, isoform 1,protein kinase A catalytic subunit

Gene Pathway

[Apoptosis](#) [Calcium signaling pathway](#) [Chemokine signaling pathway](#) [Gap junction](#)
[GnRH signaling pathway](#) [Hedgehog signaling pathway](#) [Insulin signaling pathway](#)
[Long-term potentiation](#) [MAPK signaling pathway](#) [Melanogenesis](#) [Olfactory transduction](#)
[Prion diseases](#) [Taste transduction](#) [Vascular smooth muscle contraction](#)
[Vibrio cholerae infection](#) [Wnt signaling pathway](#)

[服務條款](#) | [隱私權政策](#) | [著作及商標](#) | [網站地圖](#)

©2016 亞諾法生技股份有限公司 Abnova Corporation. 版權所有.