



SZABO SCANDIC

Part of Europa Biosite

Produktinformation



Forschungsprodukte & Biochemikalien



Zellkultur & Verbrauchsmaterial



Diagnostik & molekulare Diagnostik



Laborgeräte & Service

Weitere Information auf den folgenden Seiten!
See the following pages for more information!



Lieferung & Zahlungsart

siehe unsere [Liefer- und Versandbedingungen](#)

Zuschläge

- Mindermengenzuschlag
- Trockeneiszuschlag
- Gefahrgutzuschlag
- Expressversand

SZABO-SCANDIC HandelsgmbH

Quellenstraße 110, A-1100 Wien

T. +43(0)1 489 3961-0

F. +43(0)1 489 3961-7

mail@szabo-scandic.com

www.szabo-scandic.com

[linkedin.com/company/szaboscandic](https://www.linkedin.com/company/szaboscandic) 

PRKACB polyclonal antibody (A01)

Catalog # : H00005567-A01

規格 : [50 uL]

List All

Specification

Product Description: Mouse polyclonal antibody raised against a full-length recombinant PRKACB.

Immunogen: PRKACB (AAH16285, 1 a.a. ~ 257 a.a) full-length recombinant protein with GST tag.

Sequence: MGNAATAKKGSEVESVKEFLAKAKEDFLKKWENPTQNNAGLEDFERKK
 TLGTGSFGRVMLVKHKATEQYYAMKILDKQKVVKLKQIEHTLNEKRILQA
 VNFPFLVRLEYAFKDNSNLYMVMEYVPGGEMFSLRRIGRFSEPHARFY
 AAQIVLTFEYLHSLDLIYRDLKPENLLIDHQGYIQVTDGFAKRVKGRWT
 LCGTPEYLAPEIILSKGYNKAVDWWALGVLIYEMAAGYPPFFADQPIQIYE
 KIVSGKNF

Host: Mouse

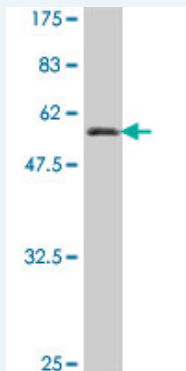
Reactivity: Human

Application Image

Western Blot (Recombinant protein)

ELISA

Quality Control Testing: Antibody Reactive Against Recombinant Protein.



Western Blot detection against Immunogen (54.38 KDa) .

Storage Buffer: 50 % glycerol

Storage Instruction: Store at -20°C or lower. Aliquot to avoid repeated freezing and thawing.

MSDS: [Download](#)

Datasheet: [Download](#)

Applications

Western Blot (Recombinant protein)

[Protocol Download](#)

ELISA

Gene Information

Entrez GeneID: [5567](#)

**GeneBank
Accession#:** [BC016285](#)

**Protein
Accession#:** [AAH16285](#)

Gene Name: PRKACB

Gene Alias: DKFZp781I2452,MGC41879,MGC9320,PKACB

**Gene
Description:** protein kinase, cAMP-dependent, catalytic, beta

Omim ID: [176892](#)

Gene Ontology: [Hyperlink](#)

Gene Summary: cAMP is a signaling molecule important for a variety of cellular functions. cAMP exerts its effects by activating the cAMP-dependent protein kinase, which transduces the signal through phosphorylation of different target proteins. The inactive kinase holoenzyme is a tetramer composed of two regulatory and two catalytic subunits. cAMP causes the dissociation of the inactive holoenzyme into a dimer of regulatory subunits bound to four cAMP and two free monomeric catalytic subunits. Four different regulatory subunits and three catalytic subunits have been identified in humans. The protein encoded by this gene is a member of the Ser/Thr protein kinase family and is a catalytic subunit of cAMP-dependent protein kinase. Three alternatively spliced transcript variants encoding distinct isoforms have been observed. [provided by RefSeq]

**Other
Designations:** OTTHUMP00000011663,OTTHUMP00000011664,OTTHUMP00000011666,PKA C-beta,cAMP-dependent protein kinase catalytic beta subunit isoform 4ab,cAMP-dependent protein kinase catalytic subunit beta,protein kinase A catalytic subunit beta

Gene Pathway

[Apoptosis](#) [Calcium signaling pathway](#) [Chemokine signaling pathway](#) [Gap junction](#)
[GnRH signaling pathway](#) [Hedgehog signaling pathway](#) [Insulin signaling pathway](#)
[Long-term potentiation](#) [MAPK signaling pathway](#) [Melanogenesis](#) [Olfactory transduction](#)
[Prion diseases](#) [Taste transduction](#) [Vascular smooth muscle contraction](#)
[Vibrio cholerae infection](#) [Wnt signaling pathway](#)

Related Disease

[Alzheimer Disease](#) [Alzheimer disease](#) [Cardiovascular Diseases](#) [Diabetes Complications](#)
[Metabolic Syndrome X](#) [Neoplasms](#) [Osteoporosis](#)

[服務條款](#) | [隱私權政策](#) | [著作及商標](#) | [網站地圖](#)

©2016 亞諾法生技股份有限公司 Abnova Corporation. 版權所有.