



# SZABO SCANDIC

Part of Europa Biosite

## Produktinformation



Forschungsprodukte & Biochemikalien



Zellkultur & Verbrauchsmaterial



Diagnostik & molekulare Diagnostik



Laborgeräte & Service

Weitere Information auf den folgenden Seiten!  
See the following pages for more information!



### Lieferung & Zahlungsart

siehe unsere [Liefer- und Versandbedingungen](#)

### Zuschläge

- Mindermengenzuschlag
- Trockeneiszuschlag
- Gefahrgutzuschlag
- Expressversand

### SZABO-SCANDIC HandelsgmbH

Quellenstraße 110, A-1100 Wien

T. +43(0)1 489 3961-0

F. +43(0)1 489 3961-7

[mail@szabo-scandic.com](mailto:mail@szabo-scandic.com)

[www.szabo-scandic.com](http://www.szabo-scandic.com)

[linkedin.com/company/szaboscandic](https://www.linkedin.com/company/szaboscandic) 

## PRKACG polyclonal antibody (A01)

Catalog # : H00005568-A01

規格 : [ 50 uL ]

List All

### Specification

**Product Description:** Mouse polyclonal antibody raised against a full-length recombinant PRKACG.

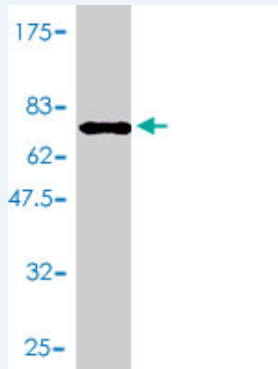
**Immunogen:** PRKACG (AAH39888, 1 a.a. ~ 351 a.a) full-length recombinant protein with GST tag.

**Sequence:** MGNAPAKKDTEQEESVNEFLAKARGDFLYRWGNPAQNTASSDQFERL  
 RTLGMGSGFRVMLVRHQETGGHYAMKILNKQKVVKMKQVEHILNEKRIL  
 QAIDFPFLVKLQFSFKDNSYLYLMEYVPGGEMFSRLQRVGRFSEPHAC  
 FYAAQVVLAVQYLHSLDLIHRDLKPENLLIDQQGYLQVTDGFAKRVKGR  
 TWLTCGTPEYLAPEIILSKGYNKAVDWWALGVLİYEMAVGFPPFYADQPI  
 QIYEKIVSGRVRFP SKLSSDLKHLLRSLQVDLTKRFGNLRNGVGDINKHK  
 WFATTSWAIYEKKVEAPFIPKYTGPGDASNFDDYEEEEELRISINEKCPKEF  
 SEF

**Host:** Mouse

**Reactivity:** Human

**Quality Control Testing:** Antibody Reactive Against Recombinant Protein.



Western Blot detection against Immunogen (64.72 KDa) .

**Storage Buffer:** 50 % glycerol

**Storage Instruction:** Store at -20°C or lower. Aliquot to avoid repeated freezing and thawing.

**MSDS:** [Download](#)

**Datasheet:** [Download](#)

### Publication Reference

1. [Visual screening and analysis for kinase-regulated membrane trafficking pathways that are involved in extensive beta-amyloid secretion.](#)  
 Adachi A, Kano F, Saido TC, Murata M. Genes Cells. 2009 Mar;14(3):355-69. Epub 2009 Feb 13.

### Applications

Western Blot (Recombinant protein)

### Application Image

Western Blot (Recombinant protein)

ELISA

---

**ELISA**

---

**Gene Information**

---

**Entrez GeneID:** [5568](#)**GeneBank  
Accession#:** [BC039888](#)**Protein  
Accession#:** [AAH39888](#)**Gene Name:** PRKACG**Gene Alias:** KAPG,PKACg**Gene  
Description:** protein kinase, cAMP-dependent, catalytic, gamma**Omim ID:** [176893](#)**Gene Ontology:** [Hyperlink](#)**Gene Summary:** Cyclic AMP-dependent protein kinase (PKA) consists of two catalytic subunits and a regulatory subunit dimer. This gene encodes the gamma form of its catalytic subunit. The gene is intronless and is thought to be a retrotransposon derived from the gene for the alpha form of the PKA catalytic subunit. [provided by RefSeq]**Other  
Designations:** OTTHUMP00000021422,PKA C-gamma,serine(threonine) protein kinase**Gene Pathway**

---

[Apoptosis](#) [Calcium signaling pathway](#) [Chemokine signaling pathway](#) [Gap junction](#)  
[GnRH signaling pathway](#) [Hedgehog signaling pathway](#) [Insulin signaling pathway](#)  
[Long-term potentiation](#) [MAPK signaling pathway](#) [Melanogenesis](#) [Olfactory transduction](#)  
[Prion diseases](#) [Taste transduction](#) [Vascular smooth muscle contraction](#)  
[Vibrio cholerae infection](#) [Wnt signaling pathway](#)