



SZABO SCANDIC

Part of Europa Biosite

Produktinformation



Forschungsprodukte & Biochemikalien



Zellkultur & Verbrauchsmaterial



Diagnostik & molekulare Diagnostik



Laborgeräte & Service

Weitere Information auf den folgenden Seiten!
See the following pages for more information!



Lieferung & Zahlungsart

siehe unsere [Liefer- und Versandbedingungen](#)

Zuschläge

- Mindermengenzuschlag
- Trockeneiszuschlag
- Gefahrgutzuschlag
- Expressversand

SZABO-SCANDIC HandelsgmbH

Quellenstraße 110, A-1100 Wien

T. +43(0)1 489 3961-0

F. +43(0)1 489 3961-7

mail@szabo-scandic.com

www.szabo-scandic.com

[linkedin.com/company/szaboscandic](https://www.linkedin.com/company/szaboscandic) 

PRKAR1A purified MaxPab mouse polyclonal antibody (B01P) MaxPab®

Catalog # : H00005573-B01P

規格 : [50 ug]

[List All](#)

Specification

Product Description: Mouse polyclonal antibody raised against a full-length human PRKAR1A protein.

Immunogen: PRKAR1A (NP_002725.1, 1 a.a. ~ 381 a.a) full-length human protein.

Sequence:
 MESGSTAASEEARSLRECELYVQKHNIQALLKDSIVQLCTARPERPMAFL
 REYFERLEKEEAKQIQLQKAGTRTDSREDEISPPPPNPVKGRRRRGAI
 SAEVYTEEDAASYVRKVIPKDYKTMALAKAIEKNLFSHLDDNERSDIFD
 AMFSVSFIAGETVIQQGDEGDNFYVIDQGETDYYVNEWATSVGEGGSF
 GELALYGT PRAATVKAKTNVKLWGIDRDSYRRILMGSTLRKRKMYEEFL
 SKVSILESLDKWERLTVADALEPVQFEDGQKIVQGEPEGDEFFIILEGSAA
 VLQRRSENEEFVEVGRLGPSDYFGEIALLMNRPRAATVARGPLKCVKL
 DRPRFERVLGPCSDILKRNIQQYNSFVSLSV

Host: Mouse

Reactivity: Human

Quality Control Testing: Antibody reactive against mammalian transfected lysate.

Storage Buffer: In 1x PBS, pH 7.4

Storage Instruction: Store at -20°C or lower. Aliquot to avoid repeated freezing and thawing.

MSDS:  [Download](#)

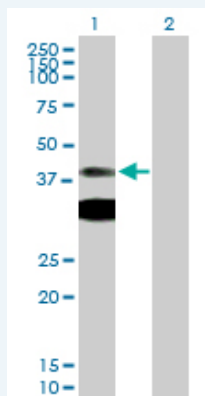
Datasheet:  [Download](#)

Publication Reference

1. Myomegalin is a novel A-kinase anchoring protein involved in the phosphorylation of cardiac myosin binding protein C.
 Uys GM, Ramburan A, Loos B, Kinnear CJ, Korkie LJ, Mouton J, Riedemann J, Moolman-Smook JC. BMC Cell Biol. 2011 May 10;12:18.

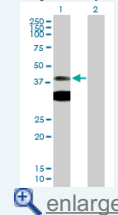
Applications

Western Blot (Transfected lysate)



Application Image

Western Blot (Transfected lysate)



Western Blot analysis of PRKAR1A expression in transfected 293T cell line ([H00005573-T02](#)) by PRKAR1A MaxPab polyclonal antibody.

Lane 1: PRKAR1A transfected lysate(41.91 KDa).

Lane 2: Non-transfected lysate.

 [Protocol Download](#)

Gene Information

Entrez GeneID: [5573](#)

GeneBank [NM_002734](#)

Accession#:

Protein [NP_002725.1](#)

Accession#:

Gene Name: PRKAR1A

Gene Alias: CAR,CNC,CNC1,DKFZp779L0468,MGC17251,PKR1,PPNAD1,PRKAR1,TSE1

Gene Description: protein kinase, cAMP-dependent, regulatory, type I, alpha (tissue specific extinguisher 1)

Omim ID: [160980](#), [188550](#), [188830](#), [255960](#), [610489](#)

Gene Ontology: [Hyperlink](#)

Gene Summary: cAMP is a signaling molecule important for a variety of cellular functions. cAMP exerts its effects by activating the cAMP-dependent protein kinase, which transduces the signal through phosphorylation of different target proteins. The inactive kinase holoenzyme is a tetramer composed of two regulatory and two catalytic subunits. cAMP causes the dissociation of the inactive holoenzyme into a dimer of regulatory subunits bound to four cAMP and two free monomeric catalytic subunits. Four different regulatory subunits and three catalytic subunits have been identified in humans. This gene encodes one of the regulatory subunits. This protein was found to be a tissue-specific extinguisher that down-regulates the expression of seven liver genes in hepatoma x fibroblast hybrids. Mutations in this gene cause Carney complex (CNC). This gene can fuse to the RET protooncogene by gene rearrangement and form the thyroid tumor-specific chimeric oncogene known as PTC2. A nonconventional nuclear localization sequence (NLS) has been found for this protein which suggests a role in DNA replication via the protein serving as a nuclear transport protein for the second subunit of the Replication Factor C (RFC40). Three alternatively spliced transcript variants encoding the same protein have been observed. [provided by RefSeq]

Other Designations: cAMP-dependent protein kinase regulatory subunit R1alpha,cAMP-dependent protein kinase type I-alpha regulatory chain,cAMP-dependent protein kinase, regulatory subunit alpha 1,protein kinase A type 1a regulatory subunit,tissue-specific extinguisher 1

Gene Pathway

[Apoptosis](#) [Insulin signaling pathway](#)

Related Disease

[Adenoma](#) [Adrenal Cortex Diseases](#) [Adrenal Cortex Neoplasms](#) [Cushing Syndrome](#)
[Genetic Predisposition to Disease](#) [Myxoma](#) [Thyroid Neoplasms](#)

