



# SZABO SCANDIC

Part of Europa Biosite

## Produktinformation



Forschungsprodukte & Biochemikalien



Zellkultur & Verbrauchsmaterial



Diagnostik & molekulare Diagnostik



Laborgeräte & Service

Weitere Information auf den folgenden Seiten!  
See the following pages for more information!



### Lieferung & Zahlungsart

siehe unsere [Liefer- und Versandbedingungen](#)

### Zuschläge

- Mindermengenzuschlag
- Trockeneiszuschlag
- Gefahrgutzuschlag
- Expressversand

### SZABO-SCANDIC HandelsgmbH

Quellenstraße 110, A-1100 Wien

T. +43(0)1 489 3961-0

F. +43(0)1 489 3961-7

[mail@szabo-scandic.com](mailto:mail@szabo-scandic.com)

[www.szabo-scandic.com](http://www.szabo-scandic.com)

[linkedin.com/company/szaboscandic](https://www.linkedin.com/company/szaboscandic) 

## PRKAR2A monoclonal antibody (M01), clone 6A9

Catalog # : H00005576-M01

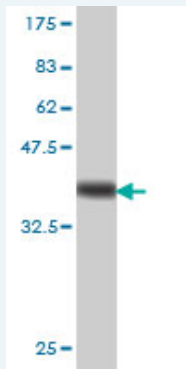
規格 : [ 100 ug ]

[List All](#)

### Specification

<b>Product Description:</b>	Mouse monoclonal antibody raised against a partial recombinant PRKAR2A.
<b>Immunogen:</b>	PRKAR2A (AAH02763, 1 a.a. ~ 105 a.a) partial recombinant protein with GST tag. MW of the GST tag alone is 26 KDa.
<b>Sequence:</b>	MSHIQIPPGLTELLQGTYVEVLRQQPPDLVEFAVEYFTRLREARAPASVLPAAATPRQSLGHPPPEPGPDRVADAKGDSESEEDLEVPVPSRFNRRVSVCAETY
<b>Host:</b>	Mouse
<b>Reactivity:</b>	Human
<b>Isotype:</b>	IgG1 Kappa

**Quality Control Testing:** Antibody Reactive Against Recombinant Protein.



Western Blot detection against Immunogen (37.18 KDa) .

**Storage Buffer:** In 1x PBS, pH 7.4

**Storage Instruction:** Store at -20°C or lower. Aliquot to avoid repeated freezing and thawing.

**MSDS:** [Download](#)

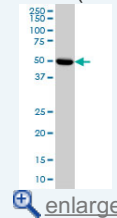
**Datasheet:** [Download](#)

### Applications

Western Blot (Cell lysate)

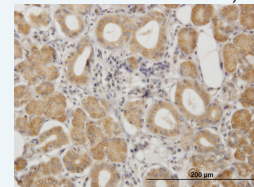
### Application Image

Western Blot (Cell lysate)



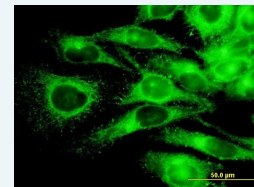
Western Blot (Recombinant protein)

Immunohistochemistry (Formalin/PFA-fixed paraffin-embedded sections)



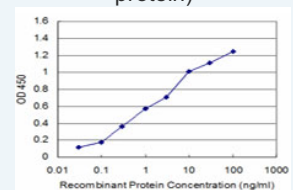
[enlarge](#)

Immunofluorescence



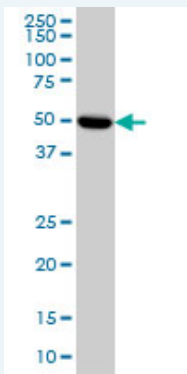
[enlarge](#)

Sandwich ELISA (Recombinant protein)



[enlarge](#)

ELISA



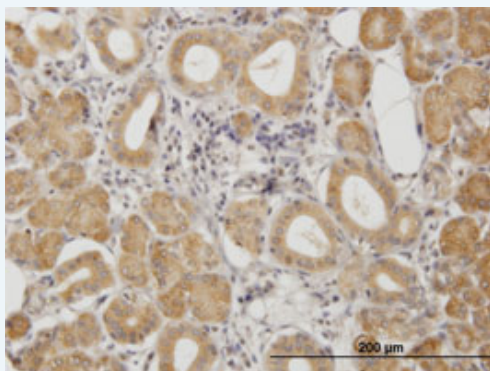
PRKAR2A monoclonal antibody (M01), clone 6A9 Western Blot analysis of PRKAR2A expression in HeLa ( Cat # L013V1 ).

[Protocol Download](#)

#### Western Blot (Recombinant protein)

[Protocol Download](#)

#### Immunohistochemistry (Formalin/PFA-fixed paraffin-embedded sections)

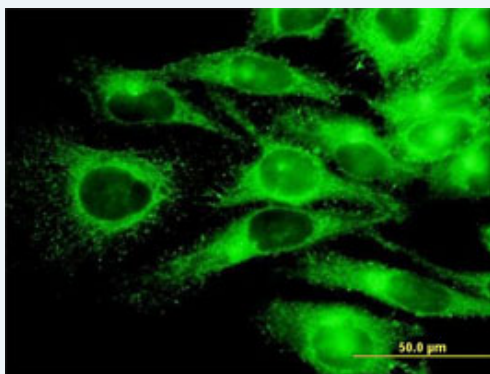


[enlarge this image](#)

Immunoperoxidase of monoclonal antibody to PRKAR2A on formalin-fixed paraffin-embedded human salivary gland. [antibody concentration 3 ug/ml]

[Protocol Download](#)

#### Immunofluorescence

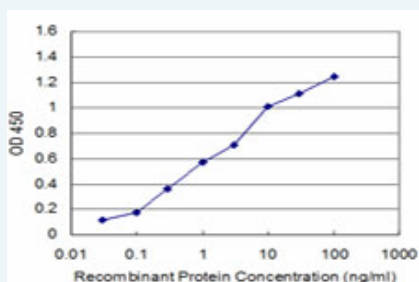


[enlarge this image](#)

Immunofluorescence of monoclonal antibody to PRKAR2A on HeLa cell . [antibody concentration 10 ug/ml]

[Protocol Download](#)

#### Sandwich ELISA (Recombinant protein)



Detection limit for recombinant GST tagged PRKAR2A is approximately 0.03ng/ml as a capture antibody.

**ELISA**

**Gene Information**

**Entrez GeneID:** [5576](#)

**GeneBank Accession#:** [BC002763](#)

**Protein Accession#:** [AAH02763](#)

**Gene Name:** PRKAR2A

**Gene Alias:** MGC3606,PKR2,PRKAR2

**Gene Description:** protein kinase, cAMP-dependent, regulatory, type II, alpha

**Omim ID:** [176910](#)

**Gene Ontology:** [Hyperlink](#)

**Gene Summary:** cAMP is a signaling molecule important for a variety of cellular functions. cAMP exerts its effects by activating the cAMP-dependent protein kinase, which transduces the signal through phosphorylation of different target proteins. The inactive kinase holoenzyme is a tetramer composed of two regulatory and two catalytic subunits. cAMP causes the dissociation of the inactive holoenzyme into a dimer of regulatory subunits bound to four cAMP and two free monomeric catalytic subunits. Four different regulatory subunits and three catalytic subunits have been identified in humans. The protein encoded by this gene is one of the regulatory subunits. This subunit can be phosphorylated by the activated catalytic subunit. It may interact with various A-kinase anchoring proteins and determine the subcellular localization of cAMP-dependent protein kinase. This subunit has been shown to regulate protein transport from endosomes to the Golgi apparatus and further to the endoplasmic reticulum (ER). [provided by RefSeq]

**Other Designations:** cAMP-dependent protein kinase regulatory subunit RII alpha,cAMP-dependent protein kinase, regulatory subunit alpha 2,protein kinase A, RII-alpha subunit

**Gene Pathway**

[Apoptosis](#) [Insulin signaling pathway](#)

**Related Disease**

[Genetic Predisposition to Disease](#) [Schizophrenia](#) [Schizophrenia](#)