



# SZABO SCANDIC

Part of Europa Biosite

## Produktinformation



Forschungsprodukte & Biochemikalien



Zellkultur & Verbrauchsmaterial



Diagnostik & molekulare Diagnostik



Laborgeräte & Service

Weitere Information auf den folgenden Seiten!  
See the following pages for more information!



### Lieferung & Zahlungsart

siehe unsere [Liefer- und Versandbedingungen](#)

### Zuschläge

- Mindermengenzuschlag
- Trockeneiszuschlag
- Gefahrgutzuschlag
- Expressversand

### SZABO-SCANDIC HandelsgmbH

Quellenstraße 110, A-1100 Wien

T. +43(0)1 489 3961-0

F. +43(0)1 489 3961-7

[mail@szabo-scandic.com](mailto:mail@szabo-scandic.com)

[www.szabo-scandic.com](http://www.szabo-scandic.com)

[linkedin.com/company/szaboscandic](https://www.linkedin.com/company/szaboscandic) 

## PRKCA polyclonal antibody (A01)

Catalog # : H00005578-A01

規格 : [ 50 uL ]

[List All](#)

### Specification

**Product Description:** Mouse polyclonal antibody raised against a partial recombinant PRKCA.

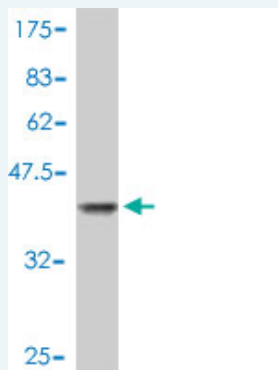
**Immunogen:** PRKCA (NP\_002728, 563 a.a. ~ 672 a.a) partial recombinant protein with GST tag.

**Sequence:** KEAVSICKGLMTKHPAKRLGCGPEGERDVREHAFFRRIDWEKLENREIQ  
PPFKPKVCGKGAENFDKFFTRGQPVLTPPDQLVIANIDQSDFEFQSYVN  
PQFVHPILQSAV

**Host:** Mouse

**Reactivity:** Human

**Quality Control Testing:** Antibody Reactive Against Recombinant Protein.



Western Blot detection against Immunogen (38.21 kDa) .

**Storage Buffer:** 50 % glycerol

**Storage Instruction:** Store at -20°C or lower. Aliquot to avoid repeated freezing and thawing.

**MSDS:** [Download](#)

**Datasheet:** [Download](#)

### Applications

**Western Blot (Recombinant protein)**

[Protocol Download](#)

**ELISA**

### Gene Information

**Entrez GeneID:** [5578](#)

**GeneBank Accession#:** [NM\\_002737](#)

### Application Image

Western Blot (Recombinant protein)

ELISA

**Protein Accession#:** [NP\\_002728](#)

**Gene Name:** PRKCA

**Gene Alias:** AAG6,MGC129900,MGC129901,PKC-alpha,PKCA,PRKACA

**Gene Description:** protein kinase C, alpha

**Omim ID:** [176960](#)

**Gene Ontology:** [Hyperlink](#)

**Gene Summary:** Protein kinase C (PKC) is a family of serine- and threonine-specific protein kinases that can be activated by calcium and the second messenger diacylglycerol. PKC family members phosphorylate a wide variety of protein targets and are known to be involved in diverse cellular signaling pathways. PKC family members also serve as major receptors for phorbol esters, a class of tumor promoters. Each member of the PKC family has a specific expression profile and is believed to play a distinct role in cells. The protein encoded by this gene is one of the PKC family members. This kinase has been reported to play roles in many different cellular processes, such as cell adhesion, cell transformation, cell cycle checkpoint, and cell volume control. Knockout studies in mice suggest that this kinase may be a fundamental regulator of cardiac contractility and Ca(2+) handling in myocytes. [provided by RefSeq]

**Other Designations:** aging-associated gene 6,protein kinase C alpha type

#### Gene Pathway

[Calcium signaling pathway](#) [ErbB signaling pathway](#) [Fc epsilon RI signaling pathway](#) [Fc gamma R-mediated phagocytosis](#) [Focal adhesion](#) [Gap junction](#) [Glioma](#) [GnRH signaling pathway](#) [Leukocyte transendothelial migration](#) [Long-term depression](#) [Long-term potentiation](#) [MAPK signaling pathway](#) [Melanogenesis](#) [Natural killer cell mediated cytotoxicity](#) [Non-small cell lung cancer](#) [Pathogenic Escherichia coli infection - EHEC](#) [Pathways in cancer](#) [Phosphatidylinositol signaling system](#) [Tight junction](#) [Vascular smooth muscle contraction](#) [VEGF signaling pathway](#) [Vibrio cholerae infection](#) [Wnt signaling pathway](#)

#### Related Disease

[Adenocarcinoma](#) [Asthma](#) [Breast cancer](#) [Breast Neoplasms](#) [Esophageal Neoplasms](#) [Genetic Predisposition to Disease](#) [Liver Cirrhosis](#) [Mental Disorders](#) [Multiple Sclerosis](#) [Obesity](#) [Pancreatic Neoplasms](#) [Premature Birth](#) [Schizophrenia](#) [Schizophrenia](#) [Tobacco Use Disorder](#) [Vaginosis, Bacterial](#)