



# SZABO SCANDIC

Part of Europa Biosite

## Produktinformation



Forschungsprodukte & Biochemikalien



Zellkultur & Verbrauchsmaterial



Diagnostik & molekulare Diagnostik



Laborgeräte & Service

Weitere Information auf den folgenden Seiten!  
See the following pages for more information!



### Lieferung & Zahlungsart

siehe unsere [Liefer- und Versandbedingungen](#)

### Zuschläge

- Mindermengenzuschlag
- Trockeneiszuschlag
- Gefahrgutzuschlag
- Expressversand

### SZABO-SCANDIC HandelsgmbH

Quellenstraße 110, A-1100 Wien

T. +43(0)1 489 3961-0

F. +43(0)1 489 3961-7

[mail@szabo-scandic.com](mailto:mail@szabo-scandic.com)

[www.szabo-scandic.com](http://www.szabo-scandic.com)

[linkedin.com/company/szaboscandic](https://www.linkedin.com/company/szaboscandic) 

## PRKCA monoclonal antibody (M01), clone 2F11

Catalog # : H00005578-M01

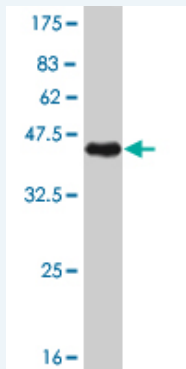
規格 : [ 100 ug ]

[List All](#)

### Specification

<b>Product Description:</b>	Mouse monoclonal antibody raised against a partial recombinant PRKCA.
<b>Immunogen:</b>	PRKCA (NP_002728, 563 a.a. ~ 672 a.a) partial recombinant protein with GST tag. MW of the GST tag alone is 26 KDa.
<b>Sequence:</b>	KEAVSICKGLMTKHPAKRLGCGPEGERDVREHAFFRRIDWEKLENREIQ PPFKPKVCGKGAENFDKFFTRGQPVLTPPDQLVIANIDQSDFEGFSYVN PQFVHPILQSAV
<b>Host:</b>	Mouse
<b>Reactivity:</b>	Human
<b>Isotype:</b>	IgG1 Kappa

**Quality Control Testing:** Antibody Reactive Against Recombinant Protein.



Western Blot detection against Immunogen (37.84 KDa) .

**Storage Buffer:** In 1x PBS, pH 7.4

**Storage Instruction:** Store at -20°C or lower. Aliquot to avoid repeated freezing and thawing.

**MSDS:** [Download](#)

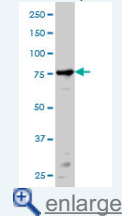
**Datasheet:** [Download](#)

### Applications

Western Blot (Cell lysate)

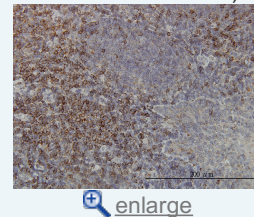
### Application Image

Western Blot (Cell lysate)

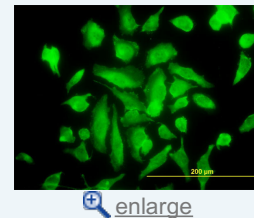


Western Blot (Recombinant protein)

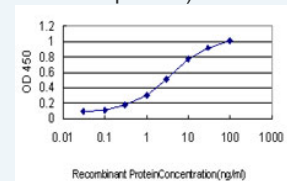
Immunohistochemistry (Formalin/PFA-fixed paraffin-embedded sections)



Immunofluorescence

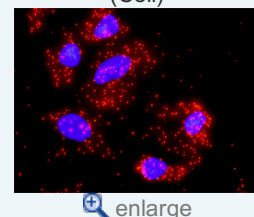


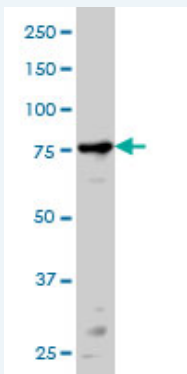
Sandwich ELISA (Recombinant protein)



ELISA

In situ Proximity Ligation Assay (Cell)





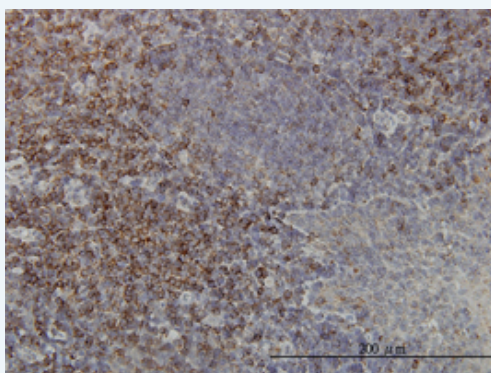
PRKCA monoclonal antibody (M01), clone 2F11 Western Blot analysis of PRKCA expression in HeLa ( Cat # L013V1 ).

[Protocol Download](#)

#### Western Blot (Recombinant protein)

[Protocol Download](#)

#### Immunohistochemistry (Formalin/PFA-fixed paraffin-embedded sections)

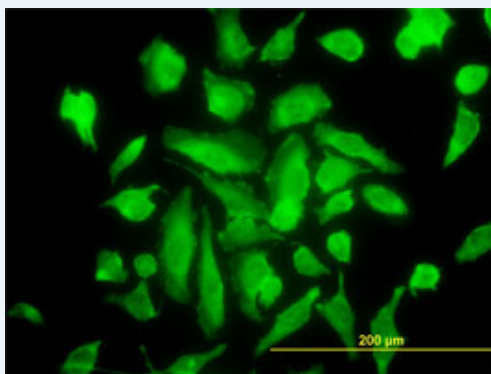


[enlarge this image](#)

Immunoperoxidase of monoclonal antibody to PRKCA on formalin-fixed paraffin-embedded human tonsil. [antibody concentration 1 ug/ml]

[Protocol Download](#)

#### Immunofluorescence

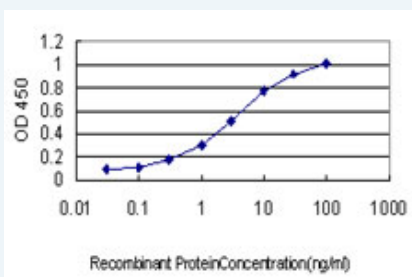


[enlarge this image](#)

Immunofluorescence of monoclonal antibody to PRKCA on HeLa cell. [antibody concentration 10 ug/ml]

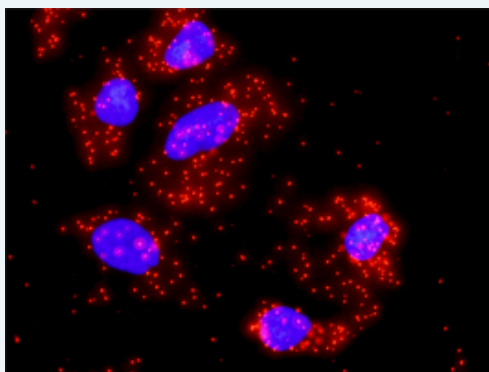
[Protocol Download](#)

#### Sandwich ELISA (Recombinant protein)



Detection limit for recombinant GST tagged PRKCA is approximately 0.1ng/ml as a capture antibody.

## ELISA

*In situ* Proximity Ligation Assay (Cell)

Proximity Ligation Analysis of protein-protein interactions between FAS and PRKCA. HeLa cells were stained with anti-FAS rabbit purified polyclonal 1:1200 and anti-PRKCA mouse monoclonal antibody 1:50. Each red dot represents the detection of protein-protein interaction complex, and nuclei were counterstained with DAPI (blue).

## Gene Information

Entrez GeneID: [5578](#)

GeneBank Accession#: [NM\\_002737](#)

Protein Accession#: [NP\\_002728](#)

Gene Name: PRKCA

Gene Alias: AAG6,MGC129900,MGC129901,PKC-alpha,PKCA,PRKACA

Gene Description: protein kinase C, alpha

Omim ID: [176960](#)

Gene Ontology: [Hyperlink](#)

**Gene Summary:** Protein kinase C (PKC) is a family of serine- and threonine-specific protein kinases that can be activated by calcium and the second messenger diacylglycerol. PKC family members phosphorylate a wide variety of protein targets and are known to be involved in diverse cellular signaling pathways. PKC family members also serve as major receptors for phorbol esters, a class of tumor promoters. Each member of the PKC family has a specific expression profile and is believed to play a distinct role in cells. The protein encoded by this gene is one of the PKC family members. This kinase has been reported to play roles in many different cellular processes, such as cell adhesion, cell transformation, cell cycle checkpoint, and cell volume control. Knockout studies in mice suggest that this kinase may be a fundamental regulator of cardiac contractility and Ca(2+) handling in myocytes. [provided by RefSeq]

Other Designations: aging-associated gene 6,protein kinase C alpha type

## Gene Pathway

[Calcium signaling pathway](#) [ErbB signaling pathway](#) [Fc epsilon RI signaling pathway](#)  
[Fc gamma R-mediated phagocytosis](#) [Focal adhesion](#) [Gap junction](#) [Glioma](#)  
[GnRH signaling pathway](#) [Leukocyte transendothelial migration](#) [Long-term depression](#)

[Long-term potentiation](#) [MAPK signaling pathway](#) [Melanogenesis](#)  
[Natural killer cell mediated cytotoxicity](#) [Non-small cell lung cancer](#)  
[Pathogenic Escherichia coli infection - EHEC](#) [Pathways in cancer](#)  
[Phosphatidylinositol signaling system](#) [Tight junction](#) [Vascular smooth muscle contraction](#)  
[VEGF signaling pathway](#) [Vibrio cholerae infection](#) [Wnt signaling pathway](#)

#### **Related Disease**

---

[Adenocarcinoma](#) [Asthma](#) [Breast cancer](#) [Breast Neoplasms](#) [Esophageal Neoplasms](#)  
[Genetic Predisposition to Disease](#) [Liver Cirrhosis](#) [Mental Disorders](#) [Multiple Sclerosis](#)  
[Obesity](#) [Pancreatic Neoplasms](#) [Premature Birth](#) [Schizophrenia](#) [Schizophrenia](#)  
[Tobacco Use Disorder](#) [Vaginosis, Bacterial](#)

---

[服務條款](#) | [隱私權政策](#) | [著作及商標](#) | [網站地圖](#)

©2016 亞諾法生技股份有限公司 Abnova Corporation. 版權所有.