



SZABO SCANDIC

Part of Europa Biosite

Produktinformation



Forschungsprodukte & Biochemikalien



Zellkultur & Verbrauchsmaterial



Diagnostik & molekulare Diagnostik



Laborgeräte & Service

Weitere Information auf den folgenden Seiten!
See the following pages for more information!



Lieferung & Zahlungsart

siehe unsere [Liefer- und Versandbedingungen](#)

Zuschläge

- Mindermengenzuschlag
- Trockeneiszuschlag
- Gefahrgutzuschlag
- Expressversand

SZABO-SCANDIC HandelsgmbH

Quellenstraße 110, A-1100 Wien

T. +43(0)1 489 3961-0

F. +43(0)1 489 3961-7

mail@szabo-scandic.com

www.szabo-scandic.com

[linkedin.com/company/szaboscandic](https://www.linkedin.com/company/szaboscandic) 

PRKCB1 polyclonal antibody (A01)

Catalog # : H00005579-A01

規格 : [50 uL]

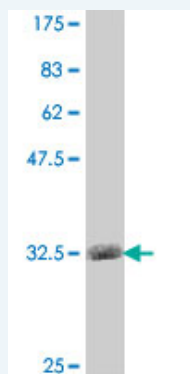
[List All](#)

Specification

| | |
|-----------------------------|---|
| Product Description: | Mouse polyclonal antibody raised against a partial recombinant PRKCB1. |
| Immunogen: | PRKCB1 (AAH36472, 261 a.a. ~ 341 a.a) partial recombinant protein with GST tag. |
| Sequence: | FGISELQKASVDGWFKLLSQEEGEYFNVPVPEEGSEANEELRQKFERAK ISQGTKVPEEKTTNTVSKFDNNGNRDRMKLTD |
| Host: | Mouse |
| Reactivity: | Human |

Quality Control Antibody Reactive Against Recombinant Protein.

Testing:



Western Blot detection against Immunogen (34.91 KDa) .

Storage Buffer: 50 % glycerol

Storage Instruction: Store at -20°C or lower. Aliquot to avoid repeated freezing and thawing.

MSDS: [Download](#)

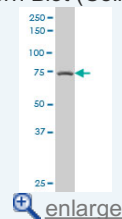
Datasheet: [Download](#)

Applications

Western Blot (Cell lysate)

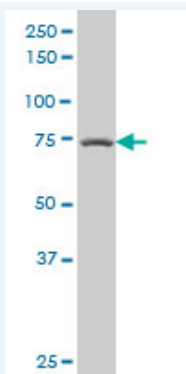
Application Image

Western Blot (Cell lysate)



Western Blot (Recombinant protein)


ELISA



PRKCB1 polyclonal antibody (A01), Lot # 051024JC01 Western Blot analysis of PRKCB1 expression in Jurkat (Cat # L017V1).

 [Protocol Download](#)

Western Blot (Recombinant protein)

 [Protocol Download](#)

ELISA

Gene Information

Entrez GeneID: [5579](#)

GeneBank [BC036472](#)

Accession#:

Protein [AAH36472](#)

Accession#:

Gene Name: PRKCB

Gene Alias: MGC41878,PKC-beta,PKCB,PRKCB1,PRKCB2

Gene protein kinase C, beta

Description:

Omim ID: [176970](#)

Gene Ontology: [Hyperlink](#)

Gene Summary: Protein kinase C (PKC) is a family of serine- and threonine-specific protein kinases that can be activated by calcium and second messenger diacylglycerol. PKC family members phosphorylate a wide variety of protein targets and are known to be involved in diverse cellular signaling pathways. PKC family members also serve as major receptors for phorbol esters, a class of tumor promoters. Each member of the PKC family has a specific expression profile and is believed to play a distinct role in cells. The protein encoded by this gene is one of the PKC family members. This protein kinase has been reported to be involved in many different cellular functions, such as B cell activation, apoptosis induction, endothelial cell proliferation, and intestinal sugar absorption. Studies in mice also suggest that this kinase may also regulate neuronal functions and correlate fear-induced conflict behavior after stress. Alternatively spliced transcript variants encoding distinct isoforms have been reported. [provided by RefSeq]

Other protein kinase C, beta 1 polypeptide

Designations:

Gene Pathway

[B cell receptor signaling pathway](#) [Calcium signaling pathway](#) [Chemokine signaling pathway](#)

[ErbB signaling pathway](#) [Fc epsilon RI signaling pathway](#)

[Fc gamma R-mediated phagocytosis](#) [Focal adhesion](#) [Gap junction](#) [Glioma](#)

[GnRH signaling pathway](#) [Leukocyte transendothelial migration](#) [Long-term depression](#)
[Long-term potentiation](#) [MAPK signaling pathway](#) [Melanogenesis](#)
[Natural killer cell mediated cytotoxicity](#) [Non-small cell lung cancer](#) [Pathways in cancer](#)
[Phosphatidylinositol signaling system](#) [Tight junction](#) [Vascular smooth muscle contraction](#)
[VEGF signaling pathway](#) [Vibrio cholerae infection](#) [Wnt signaling pathway](#)

Related Disease

[Albuminuria](#) [Autistic Disorder](#) [Cardiovascular Diseases](#) [Diabetes Mellitus, Type 1](#)
[Diabetes Mellitus, Type 2](#) [Diabetic Angiopathies](#) [Diabetic Nephropathies](#)
[Diabetic Retinopathy](#) [Disease Progression](#) [Edema](#) [Epilepsies, Partial](#)
[Genetic Predisposition to Disease](#) [Kidney Failure, Chronic](#) [Liver Cirrhosis](#) [Proteinuria](#)
[Syndrome](#) [Tobacco Use Disorder](#)

[服務條款](#) | [隱私權政策](#) | [著作及商標](#) | [網站地圖](#)

©2016 亞諾法生技股份有限公司 Abnova Corporation. 版權所有.