



SZABO SCANDIC

Part of Europa Biosite

Produktinformation



Forschungsprodukte & Biochemikalien



Zellkultur & Verbrauchsmaterial



Diagnostik & molekulare Diagnostik



Laborgeräte & Service

Weitere Information auf den folgenden Seiten!
See the following pages for more information!



Lieferung & Zahlungsart

siehe unsere [Liefer- und Versandbedingungen](#)

Zuschläge

- Mindermengenzuschlag
- Trockeneiszuschlag
- Gefahrgutzuschlag
- Expressversand

SZABO-SCANDIC HandelsgmbH

Quellenstraße 110, A-1100 Wien

T. +43(0)1 489 3961-0

F. +43(0)1 489 3961-7

mail@szabo-scandic.com

www.szabo-scandic.com

[linkedin.com/company/szaboscandic](https://www.linkedin.com/company/szaboscandic) 

PRKCB purified MaxPab rabbit polyclonal antibody (D01P) MaxPab®

Catalog # : H00005579-D01P

規格 : [100 ug]

[List All](#)

Specification

Product Description: Rabbit polyclonal antibody raised against a full-length human PRKCB protein.

Immunogen: PRKCB (NP_997700.1, 1 a.a. ~ 671 a.a) full-length human protein.

Sequence:
MADPAAGPPPSEGEESTVRFARKGALRQKNVHEVKNHKFTARFFKQPT
FCSHCTDFIWGFGKQGFQCQVCCFVHKRCHEFVTFSCPGADKGPAS
DDPRSKHKFKIHTYSSPTFCDHCGSLLYGLIHQGMKCDTCMMNVHKRCV
MNVPSLCGTDHTERRGRYIQAHDRLVIVLRDAKNLVPMDPNGLSDPY
VKLKLIPDPKSESKQKTKTIKCSLNPEWNETFRFQLKESDKDRRLSVEIW
DWDLTSRNDFMGSLSFGISELQKASVDGWFKLLSQEEGEYFNVPVPPE
GSEANEELRQKFERAKISQGTKVPEEKTNTVSKFDNNGNRDRMMLTDF
NFLMVLGKGSFGKVMLSERKGTDELYAVKILKKDVIQDDDDVECTMVEK
RVLALPGKPPFLTQLHSCFQTMDRLYFVMEYVNGGDLMYHIQQVGRFK
EPHAVFYAAEIAIGLFFLQSKGIYRDLKLDNVMMLDSEGHKIADF GMCKENI
WDGVTTKTF CGTPDYIAPEIIAYQPYGKSVDWWAFGVLLYEMLAGQAPF
EGEDEDEL FQSIMEHNVAYPKSMSKEAVAICKGLMTKHPGKRLGCGPEG
ERDIKEHAFFRYIDWEKLERKEIQPPYKPKARDKRDTSNFDKEFTRQPVE
LTPTDKLFIMNLDQNEFAGFSYTNPEFVINV

Host: Rabbit

Reactivity: Human

Quality Control Testing: Antibody reactive against mammalian transfected lysate.

Storage Buffer: In 1x PBS, pH 7.4

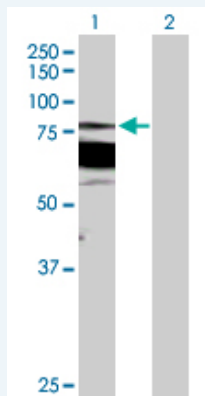
Storage Instruction: Store at -20°C or lower. Aliquot to avoid repeated freezing and thawing.

MSDS:  [Download](#)

Datasheet:  [Download](#)

Applications

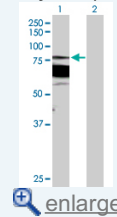
Western Blot (Transfected lysate)




Western Blot analysis of PRKCB expression in transfected 293T cell line (H00005579-T02)

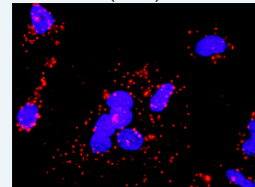
Application Image


Western Blot (Transfected lysate)



 [enlarge](#)

In situ Proximity Ligation Assay (Cell)



 [enlarge](#)

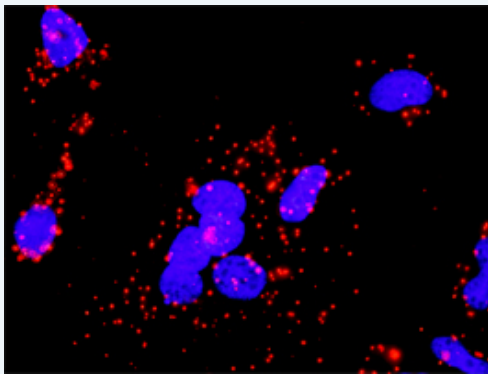
by PRKCB MaxPab polyclonal antibody.

Lane 1: PRKCB1 transfected lysate(76.90 KDa).

Lane 2: Non-transfected lysate.

 [Protocol Download](#)

***In situ* Proximity Ligation Assay (Cell)**



Proximity Ligation Analysis of protein-protein interactions between PRKCB and CHUK. HeLa cells were stained with anti-PRKCB rabbit purified polyclonal 1:1200 and anti-CHUK mouse monoclonal antibody 1:50. Each red dot represents the detection of protein-protein interaction complex, and nuclei were counterstained with DAPI (blue).

Gene Information

Entrez GeneID: [5579](#)

**GeneBank
Accession#:** [NM_212535.1](#)

**Protein
Accession#:** [NP_997700.1](#)

Gene Name: PRKCB

Gene Alias: MGC41878,PKC-beta,PKCB,PRKCB1,PRKCB2

**Gene
Description:** protein kinase C, beta

Omim ID: [176970](#)

Gene Ontology: [Hyperlink](#)

Gene Summary: Protein kinase C (PKC) is a family of serine- and threonine-specific protein kinases that can be activated by calcium and second messenger diacylglycerol. PKC family members phosphorylate a wide variety of protein targets and are known to be involved in diverse cellular signaling pathways. PKC family members also serve as major receptors for phorbol esters, a class of tumor promoters. Each member of the PKC family has a specific expression profile and is believed to play a distinct role in cells. The protein encoded by this gene is one of the PKC family members. This protein kinase has been reported to be involved in many different cellular functions, such as B cell activation, apoptosis induction, endothelial cell proliferation, and intestinal sugar absorption. Studies in mice also suggest that this kinase may also regulate neuronal functions and correlate fear-induced conflict behavior after stress. Alternatively spliced transcript variants encoding distinct isoforms have been reported. [provided by RefSeq]

**Other
Designations:** protein kinase C, beta 1 polypeptide

Gene Pathway

[B cell receptor signaling pathway](#) [Calcium signaling pathway](#) [Chemokine signaling pathway](#)
[ErbB signaling pathway](#) [Fc epsilon RI signaling pathway](#)
[Fc gamma R-mediated phagocytosis](#) [Focal adhesion](#) [Gap junction](#) [Glioma](#)
[GnRH signaling pathway](#) [Leukocyte transendothelial migration](#) [Long-term depression](#)
[Long-term potentiation](#) [MAPK signaling pathway](#) [Melanogenesis](#)
[Natural killer cell mediated cytotoxicity](#) [Non-small cell lung cancer](#) [Pathways in cancer](#)
[Phosphatidylinositol signaling system](#) [Tight junction](#) [Vascular smooth muscle contraction](#)
[VEGF signaling pathway](#) [Vibrio cholerae infection](#) [Wnt signaling pathway](#)

Related Disease

[Albuminuria](#) [Autistic Disorder](#) [Cardiovascular Diseases](#) [Diabetes Mellitus, Type 1](#)
[Diabetes Mellitus, Type 2](#) [Diabetic Angiopathies](#) [Diabetic Nephropathies](#)
[Diabetic Retinopathy](#) [Disease Progression](#) [Edema](#) [Epilepsies, Partial](#)
[Genetic Predisposition to Disease](#) [Kidney Failure, Chronic](#) [Liver Cirrhosis](#) [Proteinuria](#)
[Syndrome](#) [Tobacco Use Disorder](#)

[服務條款](#) | [隱私權政策](#) | [著作及商標](#) | [網站地圖](#)

©2016 亞諾法生技股份有限公司 Abnova Corporation. 版權所有.