



# SZABO SCANDIC

Part of Europa Biosite

## Produktinformation



Forschungsprodukte & Biochemikalien



Zellkultur & Verbrauchsmaterial



Diagnostik & molekulare Diagnostik



Laborgeräte & Service

Weitere Information auf den folgenden Seiten!  
See the following pages for more information!



### Lieferung & Zahlungsart

siehe unsere [Liefer- und Versandbedingungen](#)

### Zuschläge

- Mindermengenzuschlag
- Trockeneiszuschlag
- Gefahrgutzuschlag
- Expressversand

### SZABO-SCANDIC HandelsgmbH

Quellenstraße 110, A-1100 Wien

T. +43(0)1 489 3961-0

F. +43(0)1 489 3961-7

[mail@szabo-scandic.com](mailto:mail@szabo-scandic.com)

[www.szabo-scandic.com](http://www.szabo-scandic.com)

[linkedin.com/company/szaboscandic](https://www.linkedin.com/company/szaboscandic) 



**PRKCD MaxPab mouse polyclonal antibody (B01)** MaxPab®

Catalog # : H00005580-B01

規格 : [ 50 uL ]

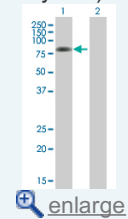
[List All](#)

**Specification**

<b>Product Description:</b>	Mouse polyclonal antibody raised against a full-length human PRKCD protein.
<b>Immunogen:</b>	PRKCD (NP_006245.2, 1 a.a. ~ 676 a.a) full-length human protein.
<b>Sequence:</b>	MAPFLRIAFNSYELGSLQAEDEANQPFCAVKMKEALSTERGKTLVQKKP TMYPEWKSTFDAHIYEGRVIQIVLMRAAEEPVSEVTGVSVLAERCKNN GKAEFWLDLQPQAKVLSVQYFLEDVDCQSMRSEDEAKFPTMNRRG AIKQAKIHYIKNHEFIATFFGQPTFCVCKDFVWGLNKQGYKCRQCNAAIH KKCIDKIIGRCTGTAANSRDTIFQKERFNIDMPHRFKVHNYMSPTFCDHCG SLLWGLVKQGLKCEDCGMNVHKKREKVANLCGINQKLLAEALNQVTQ RASRRSDSASSEPVGIYQGFEEKTVAGEDMQDNSGTGKIWEGSSKC NINNFIFHKVLGKGSFGKVLGELKGRGEYFAIKALKKDVLLIDDDVECTM VEKRVLTAAENPFLTHLICTFQTKDHLFFVMEFLNGGDLMYHIQDKGRF ELYRATFYAAEIMCGLQFLHSGIYRDLKLDNVLDRDGHKIADF GMCK ENIFGESRASTFCGTPDYIAPEILQGLKYTFSDVWWSFGVLLYEMLIQGS PFHGDDDELFE SIRVDTPHYPRWITKESKDILEKLFEREPTKRLGVTGNI KIHPPFKTINWTLLEKRRLEPPFRPKVKSPRDYSNFDQEFLNEKARLSYS DKNLIDSMDQSAFAGFSFVNPKEHLLD
<b>Host:</b>	Mouse
<b>Reactivity:</b>	Human
<b>Quality Control Testing:</b>	Antibody reactive against mammalian transfected lysate.
<b>Storage Buffer:</b>	No additive
<b>Storage Instruction:</b>	Store at -20°C or lower. Aliquot to avoid repeated freezing and thawing.
<b>Note:</b>	For IHC and IF applications, antibody purification with Protein A will be needed prior to use.
<b>MSDS:</b>	 <a href="#">Download</a>
<b>Datasheet:</b>	 <a href="#">Download</a>

**Application Image**

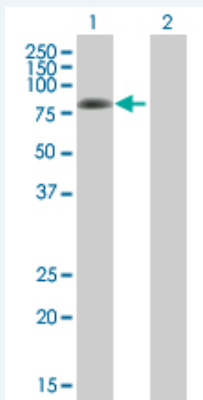
Western Blot (Transfected lysate)



 enlarge


**Applications**

Western Blot (Transfected lysate)



Western Blot analysis of PRKCD expression in transfected 293T cell line ([H00005580-T01](#)) by PRKCD MaxPab polyclonal antibody.

Lane 1: PRKCD transfected lysate(74.36 KDa).  
Lane 2: Non-transfected lysate.

 [Protocol Download](#)

## Gene Information

**Entrez GeneID:** [5580](#)

**GeneBank** [NM\\_006254.3](#)

**Accession#:**

**Protein** [NP\\_006245.2](#)

**Accession#:**

**Gene Name:** PRKCD

**Gene Alias:** MAY1,MGC49908,PKCD,nPKC-delta

**Gene** protein kinase C, delta

**Description:**

**Omim ID:** [176977](#)

**Gene Ontology:** [Hyperlink](#)

**Gene Summary:** Protein kinase C (PKC) is a family of serine- and threonine-specific protein kinases that can be activated by calcium and the second messenger diacylglycerol. PKC family members phosphorylate a wide variety of protein targets and are known to be involved in diverse cellular signaling pathways. PKC family members also serve as major receptors for phorbol esters, a class of tumor promoters. Each member of the PKC family has a specific expression profile and is believed to play distinct roles in cells. The protein encoded by this gene is one of the PKC family members. Studies both in human and mice demonstrate that this kinase is involved in B cell signaling and in the regulation of growth, apoptosis, and differentiation of a variety of cell types. Alternatively spliced transcript variants encoding the same protein have been observed. [provided by RefSeq]

**Other** protein kinase C delta VIII

**Designations:**

## Gene Pathway

[Chemokine signaling pathway](#) [Fc epsilon RI signaling pathway](#)  
[Fc gamma R-mediated phagocytosis](#) [GnRH signaling pathway](#)  
[Neurotrophin signaling pathway](#) [Tight junction](#) [Type II diabetes mellitus](#)  
[Vascular smooth muscle contraction](#)

## Related Disease

---

[服務條款](#) | [隱私權政策](#) | [著作及商標](#) | [網站地圖](#)

©2016 亞諾法生技股份有限公司 Abnova Corporation. 版權所有.