



SZABO SCANDIC

Part of Europa Biosite

Produktinformation



Forschungsprodukte & Biochemikalien



Zellkultur & Verbrauchsmaterial



Diagnostik & molekulare Diagnostik



Laborgeräte & Service

Weitere Information auf den folgenden Seiten!
See the following pages for more information!



Lieferung & Zahlungsart

siehe unsere [Liefer- und Versandbedingungen](#)

Zuschläge

- Mindermengenzuschlag
- Trockeneiszuschlag
- Gefahrgutzuschlag
- Expressversand

SZABO-SCANDIC HandelsgmbH

Quellenstraße 110, A-1100 Wien

T. +43(0)1 489 3961-0

F. +43(0)1 489 3961-7

mail@szabo-scandic.com

www.szabo-scandic.com

[linkedin.com/company/szaboscandic](https://www.linkedin.com/company/szaboscandic) 

PRKCD purified MaxPab rabbit polyclonal antibody (D01P) MaxPab®

Catalog # : H00005580-D01P

規格 : [100 ug]

[List All](#)

Specification

Product Description: Rabbit polyclonal antibody raised against a full-length human PRKCD protein.

Immunogen: PRKCD (NP_006245.2, 1 a.a. ~ 676 a.a) full-length human protein.

Sequence:
 MAPFLRIAFNSYELGSLQAEDEANQPFCAVKMKKEALSTERGKTLVQKKP
 TMYPEWKSTFFDAHIYEGRVIQIVLMRAAEEPVSEVTGVSVLAERCKNN
 GKAEFWLDLQPQAKVLSVQYFLEDVDCQSMRSEDEAKFPTMNRRG
 AIKQAKIHYIKNHEFIATFFGQPTFCVCKDFVWGLNKQGYKCRQCNAAIH
 KKCIDKIIGRCTGTAANSRDTIFQKERFNIDMPHRFKVHNYMSPTFCDHCG
 SLLWGLVKQGLKCEDCGMNVHKKREKVANLCGINQKLLAEALNQVTQ
 RASRRSDSASSEPVGIYQGFEEKTVGAGEDMQDNSGTYGKIWEGSSKC
 NINNFIFHKVLGKGSFGKVLGELKGRGEYFAIKALKKDVLLIDDDVECTM
 VEKRVLTAAENPFLTHLICTFQTKDHLFFVMEFLNGGDLMYHIQDKGRF
 ELYRATFYAAEIMCGLQFLHSGGIYRDLKLDNVLDRDGHKIADF GMCK
 ENIFGESRASTFCGTPDYIAPEILQGLKYTFSDVWWSFGVLLYEMLIGQS
 PFHGDDDELFESIRVDTPHYPRWITKESKDILEKLFEREPTKRLGVTGNI
 KIHPPFKTINWTLLEKRRLEPPFRPKVKSPRDYSNFDQEFLEKARLSYS
 DKNLIDSMDQSAFAGFSFVNPKEHLLD

Host: Rabbit

Reactivity: Human

Quality Control Testing: Antibody reactive against mammalian transfected lysate.

Storage Buffer: In 1x PBS, pH 7.4

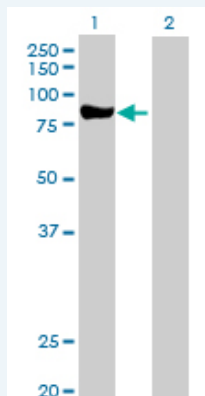
Storage Instruction: Store at -20°C or lower. Aliquot to avoid repeated freezing and thawing.

MSDS:  [Download](#)

Datasheet:  [Download](#)

Applications

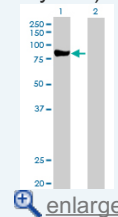
Western Blot (Transfected lysate)




Western Blot analysis of PRKCD expression in transfected 293T cell line (H00005580-T01)

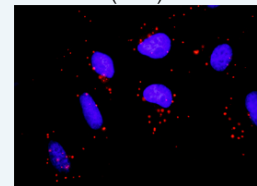
Application Image

Western Blot (Transfected lysate)



 [enlarge](#)

In situ Proximity Ligation Assay (Cell)



 [enlarge](#)

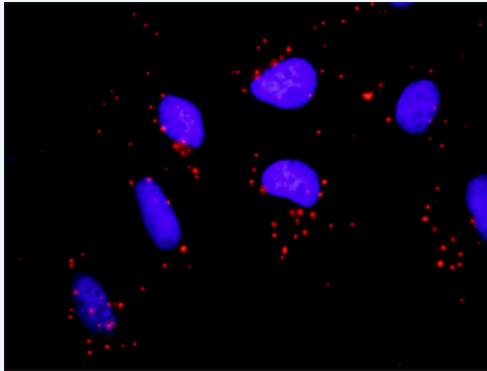
by PRKCD MaxPab polyclonal antibody.

Lane 1: PRKCD transfected lysate(77.50 KDa).

Lane 2: Non-transfected lysate.

 [Protocol Download](#)

***In situ* Proximity Ligation Assay (Cell)**



Proximity Ligation Analysis of protein-protein interactions between PRKCD and FYN. HeLa cells were stained with anti-PRKCD rabbit purified polyclonal 1:1200 and anti-FYN mouse monoclonal antibody 1:50. Each red dot represents the detection of protein-protein interaction complex, and nuclei were counterstained with DAPI (blue).

Gene Information

Entrez GeneID: [5580](#)

**GeneBank
Accession#:** [NM_006254.3](#)

**Protein
Accession#:** [NP_006245.2](#)

Gene Name: PRKCD

Gene Alias: MAY1,MGC49908,PKCD,nPKC-delta

**Gene
Description:** protein kinase C, delta

Omim ID: [176977](#)

Gene Ontology: [Hyperlink](#)

Gene Summary: Protein kinase C (PKC) is a family of serine- and threonine-specific protein kinases that can be activated by calcium and the second messenger diacylglycerol. PKC family members phosphorylate a wide variety of protein targets and are known to be involved in diverse cellular signaling pathways. PKC family members also serve as major receptors for phorbol esters, a class of tumor promoters. Each member of the PKC family has a specific expression profile and is believed to play distinct roles in cells. The protein encoded by this gene is one of the PKC family members. Studies both in human and mice demonstrate that this kinase is involved in B cell signaling and in the regulation of growth, apoptosis, and differentiation of a variety of cell types. Alternatively spliced transcript variants encoding the same protein have been observed. [provided by RefSeq]

**Other
Designations:** protein kinase C delta VIII

Gene Pathway

[Chemokine signaling pathway](#) [Fc epsilon RI signaling pathway](#)
[Fc gamma R-mediated phagocytosis](#) [GnRH signaling pathway](#)

[Neurotrophin signaling pathway](#) [Tight junction](#) [Type II diabetes mellitus](#)
[Vascular smooth muscle contraction](#)

Related Disease

[Cardiovascular Diseases](#) [Diabetes Mellitus, Type 2](#) [Edema](#)
[Genetic Predisposition to Disease](#) [Tobacco Use Disorder](#)

[服務條款](#) | [隱私權政策](#) | [著作及商標](#) | [網站地圖](#)

©2016 亞諾法生技股份有限公司 Abnova Corporation. 版權所有.