



SZABO SCANDIC

Part of Europa Biosite

Produktinformation



Forschungsprodukte & Biochemikalien



Zellkultur & Verbrauchsmaterial



Diagnostik & molekulare Diagnostik



Laborgeräte & Service

Weitere Information auf den folgenden Seiten!
See the following pages for more information!



Lieferung & Zahlungsart

siehe unsere [Liefer- und Versandbedingungen](#)

Zuschläge

- Mindermengenzuschlag
- Trockeneiszuschlag
- Gefahrgutzuschlag
- Expressversand

SZABO-SCANDIC HandelsgmbH

Quellenstraße 110, A-1100 Wien

T. +43(0)1 489 3961-0

F. +43(0)1 489 3961-7

mail@szabo-scandic.com

www.szabo-scandic.com

[linkedin.com/company/szaboscandic](https://www.linkedin.com/company/szaboscandic) 

PRKCD monoclonal antibody (M02), clone 6A2

Catalog # : H00005580-M02

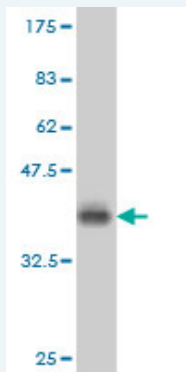
規格 : [100 ug]

[List All](#)

Specification

Product Description:	Mouse monoclonal antibody raised against a partial recombinant PRKCD.
Immunogen:	PRKCD (NP_006245, 577 a.a. ~ 676 a.a) partial recombinant protein with GST tag. MW of the GST tag alone is 26 KDa.
Sequence:	DILEKLFEREPTKRLGVTGNIKIHPFFKTINWTLLEKRRLEPPFRPKVKSPR DYSNFDQEFLENEKARLSYSDKNLIDSMQSAFAGFSFVNPKEHLLLED
Host:	Mouse
Reactivity:	Human
Isotype:	IgG2a Kappa

Quality Control Testing: Antibody Reactive Against Recombinant Protein.



Western Blot detection against Immunogen (36.74 KDa) .

Storage Buffer: In 1x PBS, pH 7.4

Storage Instruction: Store at -20°C or lower. Aliquot to avoid repeated freezing and thawing.

MSDS: [Download](#)

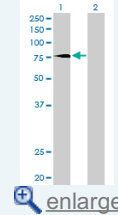
Datasheet: [Download](#)

Applications

Western Blot (Transfected lysate)

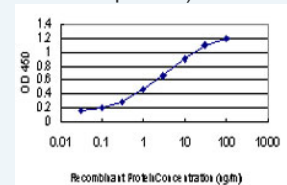
Application Image

Western Blot (Transfected lysate)



Western Blot (Recombinant protein)

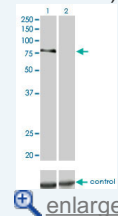
Sandwich ELISA (Recombinant protein)



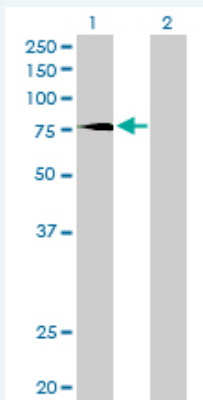
[enlarge](#)

ELISA

RNAi Knockdown (Antibody validated)



[enlarge](#)



Western Blot analysis of PRKCD expression in transfected 293T cell line by PRKCD monoclonal antibody (M02), clone 6A2.

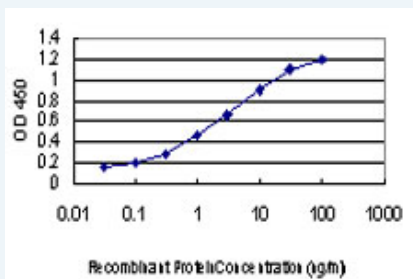
Lane 1: PRKCD transfected lysate(77.5 kDa).
Lane 2: Non-transfected lysate.

[Protocol Download](#)

Western Blot (Recombinant protein)

[Protocol Download](#)

Sandwich ELISA (Recombinant protein)

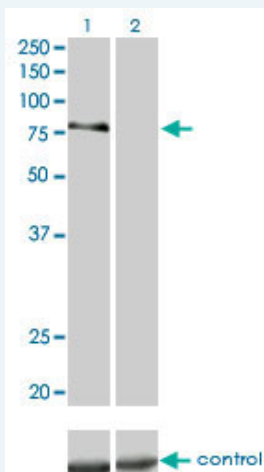


Detection limit for recombinant GST tagged PRKCD is approximately 0.1ng/ml as a capture antibody.

[Protocol Download](#)

ELISA

RNAi Knockdown (Antibody validated)



Western blot analysis of PRKCD over-expressed 293 cell line, cotransfected with PRKCD Validated Chimera RNAi (Cat # H00005580-R01V) (Lane 2) or non-transfected control (Lane 1). Blot probed with PRKCD monoclonal antibody (M02) clone 6A2 (Cat # H00005580-M02). GAPDH (36.1 kDa) used as specificity and loading control.

[Protocol Download](#)

Gene Information

Entrez GeneID: [5580](#)

**GeneBank
Accession#:** [NM_006254](#)

**Protein
Accession#:** [NP_006245](#)

Gene Name: PRKCD

Gene Alias: MAY1,MGC49908,PKCD,nPKC-delta

**Gene
Description:** protein kinase C, delta

Omim ID: [176977](#)

Gene Ontology: [Hyperlink](#)

Gene Summary: Protein kinase C (PKC) is a family of serine- and threonine-specific protein kinases that can be activated by calcium and the second messenger diacylglycerol. PKC family members phosphorylate a wide variety of protein targets and are known to be involved in diverse cellular signaling pathways. PKC family members also serve as major receptors for phorbol esters, a class of tumor promoters. Each member of the PKC family has a specific expression profile and is believed to play distinct roles in cells. The protein encoded by this gene is one of the PKC family members. Studies both in human and mice demonstrate that this kinase is involved in B cell signaling and in the regulation of growth, apoptosis, and differentiation of a variety of cell types. Alternatively spliced transcript variants encoding the same protein have been observed. [provided by RefSeq]

**Other
Designations:** protein kinase C delta VIII

Gene Pathway

[Chemokine signaling pathway](#) [Fc epsilon RI signaling pathway](#)
[Fc gamma R-mediated phagocytosis](#) [GnRH signaling pathway](#)
[Neurotrophin signaling pathway](#) [Tight junction](#) [Type II diabetes mellitus](#)
[Vascular smooth muscle contraction](#)

Related Disease

[Cardiovascular Diseases](#) [Diabetes Mellitus, Type 2](#) [Edema](#)
[Genetic Predisposition to Disease](#) [Tobacco Use Disorder](#)