



SZABO SCANDIC

Part of Europa Biosite

Produktinformation



Forschungsprodukte & Biochemikalien



Zellkultur & Verbrauchsmaterial



Diagnostik & molekulare Diagnostik



Laborgeräte & Service

Weitere Information auf den folgenden Seiten!
See the following pages for more information!



Lieferung & Zahlungsart

siehe unsere [Liefer- und Versandbedingungen](#)

Zuschläge

- Mindermengenzuschlag
- Trockeneiszuschlag
- Gefahrgutzuschlag
- Expressversand

SZABO-SCANDIC HandelsgmbH

Quellenstraße 110, A-1100 Wien

T. +43(0)1 489 3961-0

F. +43(0)1 489 3961-7

mail@szabo-scandic.com

www.szabo-scandic.com

[linkedin.com/company/szaboscandic](https://www.linkedin.com/company/szaboscandic) 

PRKCE polyclonal antibody (A01)

Catalog # : H00005581-A01

規格 : [50 uL]

[List All](#)

Specification

Product Description: Mouse polyclonal antibody raised against a partial recombinant PRKCE.

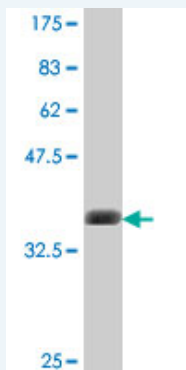
Immunogen: PRKCE (NP_005391, 301 a.a. ~ 400 a.a) partial recombinant protein with GST tag.

Sequence: KVLADLGVTDPKITNSGQRRKLIAGAESPQPASGSSPSEEDRSKSAPTS
PCDQEIKELENNIRKALSFDNRGEEHRAASSPDGQLMSPGENGEVRQGG
A

Host: Mouse

Reactivity: Human, Mouse

Quality Control Testing: Antibody Reactive Against Recombinant Protein.



Western Blot detection against Immunogen (37.11 kDa) .

Storage Buffer: 50 % glycerol

Storage Instruction: Store at -20°C or lower. Aliquot to avoid repeated freezing and thawing.

MSDS: [Download](#)

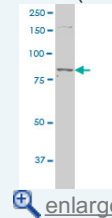
Datasheet: [Download](#)

Applications

Western Blot (Cell lysate)

Application Image

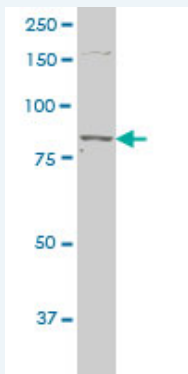
Western Blot (Cell lysate)



[enlarge](#)

Western Blot (Recombinant protein)


ELISA



PRKCE polyclonal antibody (A01), Lot # 051024JC01 Western Blot analysis of PRKCE expression in NIH3T3 (Cat # L018V1).

 [Protocol Download](#)

Western Blot (Recombinant protein)

 [Protocol Download](#)

ELISA

Gene Information

Entrez GeneID: [5581](#)

GeneBank Accession#: [NM_005400](#)

Protein Accession#: [NP_005391](#)

Gene Name: PRKCE

Gene Alias: MGC125656,MGC125657,PKCE,nPKC-epsilon

Gene Description: protein kinase C, epsilon

Omim ID: [176975](#)

Gene Ontology: [Hyperlink](#)

Gene Summary: Protein kinase C (PKC) is a family of serine- and threonine-specific protein kinases that can be activated by calcium and the second messenger diacylglycerol. PKC family members phosphorylate a wide variety of protein targets and are known to be involved in diverse cellular signaling pathways. PKC family members also serve as major receptors for phorbol esters, a class of tumor promoters. Each member of the PKC family has a specific expression profile and is believed to play a distinct role in cells. The protein encoded by this gene is one of the PKC family members. This kinase has been shown to be involved in many different cellular functions, such as neuron channel activation, apoptosis, cardioprotection from ischemia, heat shock response, as well as insulin exocytosis. Knockout studies in mice suggest that this kinase is important for lipopolysaccharide (LPS)-mediated signaling in activated macrophages and may also play a role in controlling anxiety-like behavior. [provided by RefSeq]

Other Designations: -

Gene Pathway

[Fc epsilon RI signaling pathway](#) [Fc gamma R-mediated phagocytosis](#) [Tight junction](#)
[Type II diabetes mellitus](#) [Vascular smooth muscle contraction](#)

Related Disease

[Disease Models, Animal](#) [Genetic Predisposition to Disease](#) [Narcolepsy](#)
[Tobacco Use Disorder](#)

[服務條款](#) | [隱私權政策](#) | [著作及商標](#) | [網站地圖](#)

©2016 亞諾法生技股份有限公司 Abnova Corporation. 版權所有.