



SZABO SCANDIC

Part of Europa Biosite

Produktinformation



Forschungsprodukte & Biochemikalien



Zellkultur & Verbrauchsmaterial



Diagnostik & molekulare Diagnostik



Laborgeräte & Service

Weitere Information auf den folgenden Seiten!
See the following pages for more information!



Lieferung & Zahlungsart

siehe unsere [Liefer- und Versandbedingungen](#)

Zuschläge

- Mindermengenzuschlag
- Trockeneiszuschlag
- Gefahrgutzuschlag
- Expressversand

SZABO-SCANDIC HandelsgmbH

Quellenstraße 110, A-1100 Wien

T. +43(0)1 489 3961-0

F. +43(0)1 489 3961-7

mail@szabo-scandic.com

www.szabo-scandic.com

[linkedin.com/company/szaboscandic](https://www.linkedin.com/company/szaboscandic) 

PRKCG polyclonal antibody (A01)

Catalog # : H00005582-A01

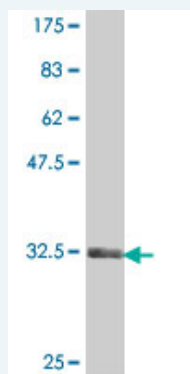
規格 : [50 uL]

[List All](#)

Specification

Product Description:	Mouse polyclonal antibody raised against a partial recombinant PRKCG.
Immunogen:	PRKCG (AAH47876, 260 a.a. ~ 351 a.a) partial recombinant protein with GST tag.
Sequence:	SFGVSELLKAPVDGWYKLLNQEEGEYYNVPVADADNCSLLQKFEACNY PLELYERVIRMGPSSSIPSPSPSPDPKRCFFGASPGRLHISDF
Host:	Mouse
Reactivity:	Human

Quality Control Testing: Antibody Reactive Against Recombinant Protein.



Western Blot detection against Immunogen (36.12 KDa) .

Storage Buffer: 50 % glycerol

Storage Instruction: Store at -20°C or lower. Aliquot to avoid repeated freezing and thawing.

MSDS: [Download](#)

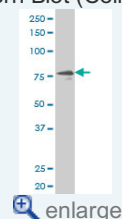
Datasheet: [Download](#)

Applications

Western Blot (Cell lysate)

Application Image

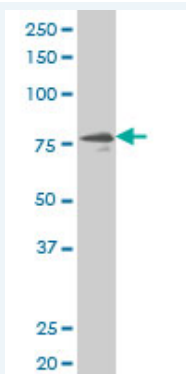
Western Blot (Cell lysate)




[enlarge](#)

Western Blot (Recombinant protein)


ELISA



PRKCG polyclonal antibody (A01), Lot # 051122JC01 Western Blot analysis of PRKCG expression in Jurkat (Cat # L017V1).

 [Protocol Download](#)

Western Blot (Recombinant protein)

 [Protocol Download](#)

ELISA

Gene Information

Entrez GeneID: [5582](#)

GeneBank [BC047876](#)
Accession#:

Protein [AAH47876](#)
Accession#:

Gene Name: PRKCG

Gene Alias: MGC57564,PKC-gamma,PKCC,PKCG,SCA14

Gene Description: protein kinase C, gamma

Omim ID: [176980](#), [605361](#)

Gene Ontology: [Hyperlink](#)

Gene Summary: Protein kinase C (PKC) is a family of serine- and threonine-specific protein kinases that can be activated by calcium and second messenger diacylglycerol. PKC family members phosphorylate a wide variety of protein targets and are known to be involved in diverse cellular signaling pathways. PKC also serve as major receptors for phorbol esters, a class of tumor promoters. Each member of the PKC family has a specific expression profile and is believed to play distinct roles in cells. The protein encoded by this gene is one of the PKC family members. This protein kinase is expressed solely in the brain and spinal cord and its localization is restricted to neurons. It has been demonstrated that several neuronal functions, including long term potentiation (LTP) and long term depression (LTD), specifically require this kinase. Knockout studies in mice also suggest that this kinase may be involved in neuropathic pain development. Defects in this protein have been associated with neurodegenerative disorder spinocerebellar ataxia-14 (SCA14). [provided by RefSeq]

Other Designations: -

Gene Pathway

[Calcium signaling pathway](#) [ErbB signaling pathway](#) [Fc gamma R-mediated phagocytosis](#)
[Focal adhesion](#) [Gap junction](#) [Glioma](#) [Leukocyte transendothelial migration](#)

[Long-term depression](#) [Long-term potentiation](#) [MAPK signaling pathway](#) [Melanogenesis](#)
[Natural killer cell mediated cytotoxicity](#) [Non-small cell lung cancer](#) [Pathways in cancer](#)
[Phosphatidylinositol signaling system](#) [Tight junction](#) [Vascular smooth muscle contraction](#)
[VEGF signaling pathway](#) [Vibrio cholerae infection](#) [Wnt signaling pathway](#)

Related Disease

[Antisocial Personality Disorder](#) [Attention Deficit Disorder with Hyperactivity](#)
[Cardiovascular Diseases](#) [Conduct Disorder](#) [Depressive Disorder, Major](#)
[Diabetes Mellitus, Type 2](#) [Edema](#) [Genetic Predisposition to Disease](#) [Inhibition \(Psychology\)](#)
[Liver Cirrhosis](#) [Spinocerebellar ataxia](#) [Spinocerebellar Ataxias](#)
[Substance-Related Disorders](#)

[服務條款](#) | [隱私權政策](#) | [著作及商標](#) | [網站地圖](#)

©2016 亞諾法生技股份有限公司 Abnova Corporation. 版權所有.