



SZABO SCANDIC

Part of Europa Biosite

Produktinformation



Forschungsprodukte & Biochemikalien



Zellkultur & Verbrauchsmaterial



Diagnostik & molekulare Diagnostik



Laborgeräte & Service

Weitere Information auf den folgenden Seiten!
See the following pages for more information!



Lieferung & Zahlungsart

siehe unsere [Liefer- und Versandbedingungen](#)

Zuschläge

- Mindermengenzuschlag
- Trockeneiszuschlag
- Gefahrgutzuschlag
- Expressversand

SZABO-SCANDIC HandelsgmbH

Quellenstraße 110, A-1100 Wien

T. +43(0)1 489 3961-0

F. +43(0)1 489 3961-7

mail@szabo-scandic.com

www.szabo-scandic.com

[linkedin.com/company/szaboscandic](https://www.linkedin.com/company/szaboscandic) 

PRKCH polyclonal antibody (A02)

Catalog # : H00005583-A02

規格 : [50 uL]

[List All](#)

Specification

Product Description: Mouse polyclonal antibody raised against a partial recombinant PRKCH.

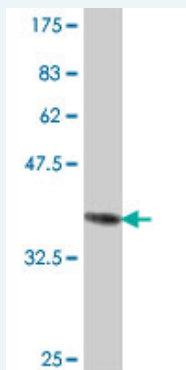
Immunogen: PRKCH (NP_006246, 1 a.a. ~ 100 a.a) partial recombinant protein with GST tag.

Sequence: MSSGTMKFNGLRVRIGEAVGLQPTRWLSLRHSLFKKGHQLLDPYLTVS
VDQVRVGQTSTKQKTNKPTYNEEF CANVTDGGHLELAVFHETPLGYDH
FVAN

Host: Mouse

Reactivity: Human

Quality Control Testing: Antibody Reactive Against Recombinant Protein.



Western Blot detection against Immunogen (37.11 kDa) .

Storage Buffer: 50 % glycerol

Storage Instruction: Store at -20°C or lower. Aliquot to avoid repeated freezing and thawing.

MSDS: [Download](#)

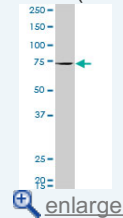
Datasheet: [Download](#)

Applications

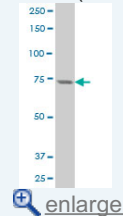
Western Blot (Cell lysate)

Application Image

Western Blot (Cell lysate)

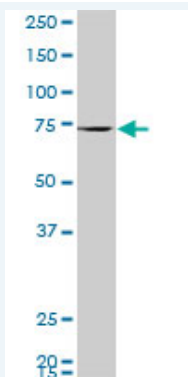


Western Blot (Cell lysate)



Western Blot (Recombinant protein)

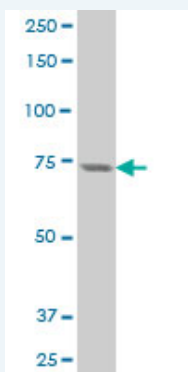
ELISA




PRKCH polyclonal antibody (A02), Lot # 060803QCS1. Western Blot analysis of PRKCH expression in HL-60.

 [Protocol Download](#)

Western Blot (Cell lysate)



PRKCH polyclonal antibody (A02), Lot # 051128JC01 Western Blot analysis of PRKCH expression in A-431 (Cat # L015V1).

 [Protocol Download](#)

Western Blot (Recombinant protein)

 [Protocol Download](#)

ELISA

Gene Information

Entrez GeneID: [5583](#)

GeneBank [NM_006255](#)
Accession#:

Protein [NP_006246](#)
Accession#:

Gene Name: PRKCH

Gene Alias: MGC26269,MGC5363,PKC-L,PKCL,PRKCL,nPKC-eta

Gene Description: protein kinase C, eta

Omim ID: [601367](#), [605437](#)

Gene Ontology: [Hyperlink](#)

Gene Summary: Protein kinase C (PKC) is a family of serine- and threonine-specific protein kinases that can be activated by calcium and the second messenger diacylglycerol. PKC family members phosphorylate a wide variety of protein targets and are known to be involved in diverse cellular signaling pathways. PKC family members also serve as major receptors for phorbol esters, a class of tumor promoters. Each member

of the PKC family has a specific expression profile and is believed to play a distinct role in cells. The protein encoded by this gene is one of the PKC family members. It is a calcium-independent and phospholipids-dependent protein kinase. It is predominantly expressed in epithelial tissues and has been shown to reside specifically in the cell nucleus. This protein kinase can regulate keratinocyte differentiation by activating the MAP kinase MAPK13 (p38delta)-activated protein kinase cascade that targets CCAAT/enhancer-binding protein alpha (CEBPA). It is also found to mediate the transcription activation of the transglutaminase 1 (TGM1) gene. [provided by RefSeq]

Other protein kinase C eta type

Designations:

Gene Pathway

[Tight junction](#) [Vascular smooth muscle contraction](#)

Related Disease

[Arthritis, Rheumatoid](#) [Atherosclerosis](#) [Atherosclerosis](#) [Brain Infarction](#) [Brain Ischemia](#)
[Cerebral Hemorrhage](#) [Depressive Disorder, Major](#) [Gastritis, Atrophic](#)
[Genetic Predisposition to Disease](#) [Helicobacter Infections](#) [Hypertension](#) [Inflammation](#)
[Narcolepsy](#) [Stomach Neoplasms](#) [Stroke](#) [Tobacco Use Disorder](#)

[服務條款](#) | [隱私權政策](#) | [著作及商標](#) | [網站地圖](#)

©2016 亞諾法生技股份有限公司 Abnova Corporation. 版權所有.