



SZABO SCANDIC

Part of Europa Biosite

Produktinformation



Forschungsprodukte & Biochemikalien



Zellkultur & Verbrauchsmaterial



Diagnostik & molekulare Diagnostik



Laborgeräte & Service

Weitere Information auf den folgenden Seiten!
See the following pages for more information!



Lieferung & Zahlungsart

siehe unsere [Liefer- und Versandbedingungen](#)

Zuschläge

- Mindermengenzuschlag
- Trockeneiszuschlag
- Gefahrgutzuschlag
- Expressversand

SZABO-SCANDIC HandelsgmbH

Quellenstraße 110, A-1100 Wien

T. +43(0)1 489 3961-0

F. +43(0)1 489 3961-7

mail@szabo-scandic.com

www.szabo-scandic.com

[linkedin.com/company/szaboscandic](https://www.linkedin.com/company/szaboscandic) 



PRKCH purified MaxPab mouse polyclonal antibody (B02P) MaxPab®

Catalog # : H00005583-B02P

規格 : [50 ug]

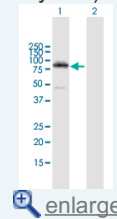
[List All](#)


Specification

Product Description:	Mouse polyclonal antibody raised against a full-length human PRKCH protein.
Immunogen:	PRKCH (NP_006246.2, 1 a.a. ~ 683 a.a) full-length human protein.
Sequence:	MSSGTMKFNGLRVRIGEAVGLQPTRWLSLRHSLFKKGGHQLLDPYLTVS VDQVRVGQTSTKQKTNKPTYNEEFCANVTDGGHLELAVFHETPLGYDH FVANCTLQFQELLRTTGASDTFEGWVDLEPEGKVFVITLTGSFTEATL QRDRIFKHFTRKRQRAMRRRVHQINGHKFMATYLRQPTYCASHCREFIW GVFGKQGYQCQVCTCVVHKRCHLMTACTCQNNINKVDSKIAEQRFGIN IPHKFSIHNYKVPTFCDHCGSLLWGIMRQGLQCKICKMNVHIRCQANVAPN CGVNAVELAKTLAGMGLQPGNISPTSKLVSRSLLRRQGKESKEGNGIG VNSSNRLGIDNFEFIRVLGKGSFGKVMLARVKETGDLYAVKVLKDDVILQ DDDVECTMTEKRILSLARNHPFLTQLFCCFQTPDRLFFVMEFVNGGDLN FHIQSRRFDEARARFYAAEISALMFLHDKGIYRDLKLDNLLDHEGHCK LADFGMCKEGICNGVTTATFCGTPDYIAPEILQEMLYGPVADWWAMGV LYEMLCGHAPFEAENEDDLFEAILNDEVVYPTWLHEDATGILKSFMTKNP TMRLGSLTQGGHAILRHPFFKEIDWAQLNHRQIEPPFRPRIKSREDVSN FDPDFIKEEPVLTPIDEGHLPMINQDEFNRNFSYVSPQLQ
Host:	Mouse
Reactivity:	Human
Quality Control Testing:	Antibody reactive against mammalian transfected lysate.
Storage Buffer:	In 1x PBS, pH 7.4
Storage Instruction:	Store at -20°C or lower. Aliquot to avoid repeated freezing and thawing.
MSDS:	 Download
Datasheet:	 Download

Application Image

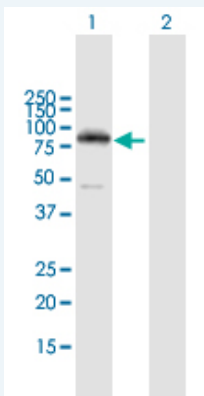
Western Blot (Transfected lysate)



 [enlarge](#)

Applications

Western Blot (Transfected lysate)



Western Blot analysis of PRKCH expression in transfected 293T cell line (H00005583-T02)

by PRKCH MaxPab polyclonal antibody.

Lane 1: PRKCH transfected lysate(75.13 KDa).

Lane 2: Non-transfected lysate.

 [Protocol Download](#)

Gene Information

Entrez GeneID: [5583](#)

GeneBank [NM_006255.3](#)

Accession#:

Protein [NP_006246.2](#)

Accession#:

Gene Name: PRKCH

Gene Alias: MGC26269,MGC5363,PKC-L,PKCL,PRKCL,nPKC-eta

Gene protein kinase C, eta

Description:

Omim ID: [601367](#), [605437](#)

Gene Ontology: [Hyperlink](#)

Gene Summary: Protein kinase C (PKC) is a family of serine- and threonine-specific protein kinases that can be activated by calcium and the second messenger diacylglycerol. PKC family members phosphorylate a wide variety of protein targets and are known to be involved in diverse cellular signaling pathways. PKC family members also serve as major receptors for phorbol esters, a class of tumor promoters. Each member of the PKC family has a specific expression profile and is believed to play a distinct role in cells. The protein encoded by this gene is one of the PKC family members. It is a calcium-independent and phospholipids-dependent protein kinase. It is predominantly expressed in epithelial tissues and has been shown to reside specifically in the cell nucleus. This protein kinase can regulate keratinocyte differentiation by activating the MAP kinase MAPK13 (p38delta)-activated protein kinase cascade that targets CCAAT/enhancer-binding protein alpha (CEBPA). It is also found to mediate the transcription activation of the transglutaminase 1 (TGM1) gene. [provided by RefSeq]

Other protein kinase C eta type

Designations:

Gene Pathway

[Tight junction](#) [Vascular smooth muscle contraction](#)

Related Disease

[Arthritis, Rheumatoid](#) [Atherosclerosis](#) [Atherosclerosis](#) [Brain Infarction](#) [Brain Ischemia](#) [Cerebral Hemorrhage](#) [Depressive Disorder, Major](#) [Gastritis, Atrophic](#) [Genetic Predisposition to Disease](#) [Helicobacter Infections](#) [Hypertension](#) [Inflammation](#) [Narcolepsy](#) [Stomach Neoplasms](#) [Stroke](#) [Tobacco Use Disorder](#)