



# SZABO SCANDIC

Part of Europa Biosite

## Produktinformation



Forschungsprodukte & Biochemikalien



Zellkultur & Verbrauchsmaterial



Diagnostik & molekulare Diagnostik



Laborgeräte & Service

Weitere Information auf den folgenden Seiten!  
See the following pages for more information!



### Lieferung & Zahlungsart

siehe unsere [Liefer- und Versandbedingungen](#)

### Zuschläge

- Mindermengenzuschlag
- Trockeneiszuschlag
- Gefahrgutzuschlag
- Expressversand

### SZABO-SCANDIC HandelsgmbH

Quellenstraße 110, A-1100 Wien

T. +43(0)1 489 3961-0

F. +43(0)1 489 3961-7

[mail@szabo-scandic.com](mailto:mail@szabo-scandic.com)

[www.szabo-scandic.com](http://www.szabo-scandic.com)

[linkedin.com/company/szaboscandic](https://www.linkedin.com/company/szaboscandic) 

## PRKCH 293T Cell Transient Overexpression Lysate(Denatured)

Catalog # : H00005583-T02

規格 : [ 100 uL ]

List All

### Specification

**Transfected Cell Line:** 293T

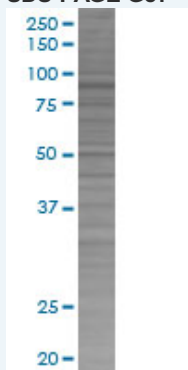
**Plasmid:** pCMV-PRKCH full-length

**Host:** Human

**Theoretical MW (kDa):** 77.8

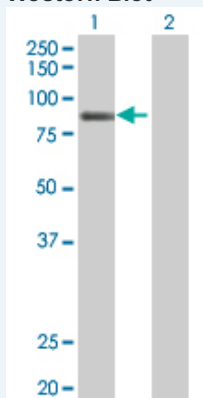
**Quality Control Testing:** Transient overexpression cell lysate was tested with Anti-PRKCH antibody (H00005583-B02) by Western Blots.

#### SDS-PAGE Gel



PRKCH transfected lysate.

#### Western Blot



Lane 1: PRKCH transfected lysate ( 77.8 KDa)

Lane 2: Non-transfected lysate.

**Storage Buffer:** 1X Sample Buffer (50 mM Tris-HCl, 2% SDS, 10% glycerol, 300 mM 2-mercaptoethanol, 0.01% Bromophenol blue)

**Storage Instruction:** Store at -80°C. Aliquot to avoid repeated freezing and thawing.

**MSDS:**  [Download](#)

### Applications

## Western Blot

### Gene Information

Entrez GeneID: [5583](#)

GeneBank [NM\\_006255.3](#)  
Accession#:

Protein =  
Accession#:

Gene Name: PRKCH

Gene Alias: MGC26269,MGC5363,PKC-L,PKCL,PRKCL,nPKC-eta

Gene Description: protein kinase C, eta

Omim ID: [601367](#), [605437](#)

Gene Ontology: [Hyperlink](#)

**Gene Summary:** Protein kinase C (PKC) is a family of serine- and threonine-specific protein kinases that can be activated by calcium and the second messenger diacylglycerol. PKC family members phosphorylate a wide variety of protein targets and are known to be involved in diverse cellular signaling pathways. PKC family members also serve as major receptors for phorbol esters, a class of tumor promoters. Each member of the PKC family has a specific expression profile and is believed to play a distinct role in cells. The protein encoded by this gene is one of the PKC family members. It is a calcium-independent and phospholipids-dependent protein kinase. It is predominantly expressed in epithelial tissues and has been shown to reside specifically in the cell nucleus. This protein kinase can regulate keratinocyte differentiation by activating the MAP kinase MAPK13 (p38delta)-activated protein kinase cascade that targets CCAAT/enhancer-binding protein alpha (CEBPA). It is also found to mediate the transcription activation of the transglutaminase 1 (TGM1) gene. [provided by RefSeq]

Other Designations: protein kinase C eta type

### Gene Pathway

[Tight junction](#) [Vascular smooth muscle contraction](#)

### Related Disease

[Arthritis](#), [Rheumatoid Atherosclerosis](#), [Atherosclerosis](#), [Brain Infarction](#), [Brain Ischemia](#), [Cerebral Hemorrhage](#), [Depressive Disorder](#), [Major Gastritis](#), [Atrophic Genetic Predisposition to Disease](#), [Helicobacter Infections](#), [Hypertension](#), [Inflammation](#), [Narcolepsy](#), [Stomach Neoplasms](#), [Stroke](#), [Tobacco Use Disorder](#)