



SZABO SCANDIC

Part of Europa Biosite

Produktinformation



Forschungsprodukte & Biochemikalien



Zellkultur & Verbrauchsmaterial



Diagnostik & molekulare Diagnostik



Laborgeräte & Service

Weitere Information auf den folgenden Seiten!
See the following pages for more information!



Lieferung & Zahlungsart

siehe unsere [Liefer- und Versandbedingungen](#)

Zuschläge

- Mindermengenzuschlag
- Trockeneiszuschlag
- Gefahrgutzuschlag
- Expressversand

SZABO-SCANDIC HandelsgmbH

Quellenstraße 110, A-1100 Wien

T. +43(0)1 489 3961-0

F. +43(0)1 489 3961-7

mail@szabo-scandic.com

www.szabo-scandic.com

[linkedin.com/company/szaboscandic](https://www.linkedin.com/company/szaboscandic) 

PRKCI monoclonal antibody (M01), clone 1G11

Catalog # : H00005584-M01

規格 : [100 ug]

List All

Specification

Product Description: Mouse monoclonal antibody raised against a full length recombinant PRKCI.

Immunogen: PRKCI (AAH22016, 1 a.a. ~ 587 a.a) full-length recombinant protein with GST tag. MW of the GST tag alone is 26 KDa.

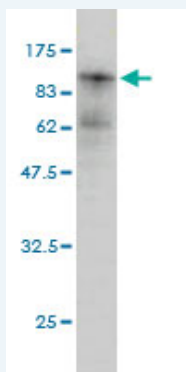
Sequence: MSHTVAGGGSGDHSQVRVKAYYRGDIMITHFEPSISFEGLCNEVRDMC
SFDNEQLFTMKWIDEEGDPCTVSSQLELEEFRLYELNKDSELLIHVFPC
VPERPGMPCPGEDKSIYRRGARRWRKLYCANGHTFQAKRFNRRACAI
CTDRIWGLGRQGYKCINCKLLVHKKCHKLVTEICGRHSLPQEPVMPMDQ
SSMHSDDHAQTVIPYNPSSHESLDQVGEKEAMNTRESGKASSLGLQDF
DLLRVIGRGSYAKVLLVRLKKTDRYAMKVVKKELVNDEDEDWVQTEKH
VFEQASNHFLVGLHSCFQTESRFFVIEYVNGDLMFHMQRQRKLP
HARFYSAEISLALNYLHERGIIYRDLKLDNVLLDSEGHKLTGYMCKEGLR
PGDTTSTFCGTPNYIAPEILRGEDYGFSDVWWALGVLMEFMAGRSPF
DIVGSSDNPQNTEDYLFQVILEKQIRIPRSMVKAASVLKSFLNKDPKER
LGCLPQTGFADIQGHPPFRNVDWDMMEQKQVPPFKPNISGEFGLDNF
DSQFTNERVQLTPDDDDIVRKIDQSEFEGFEYINPLLSAECEV

Host: Mouse

Reactivity: Human

Isotype: IgG1 kappa

Quality Control Testing: Antibody Reactive Against Recombinant Protein.



Western Blot detection against Immunogen (90.31 KDa) .

Storage Buffer: In 1x PBS, pH 7.4

Storage Instruction: Store at -20°C or lower. Aliquot to avoid repeated freezing and thawing.

MSDS: [Download](#)

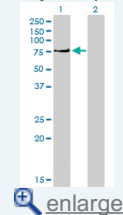
Datasheet: [Download](#)

Applications

Western Blot (Transfected lysate)

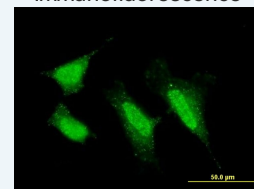
Application Image

Western Blot (Transfected lysate)

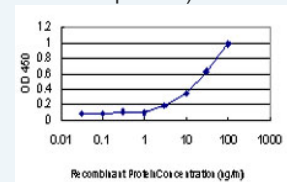


Western Blot (Recombinant protein)

Immunofluorescence



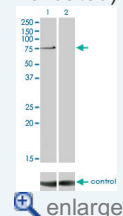
Sandwich ELISA (Recombinant protein)

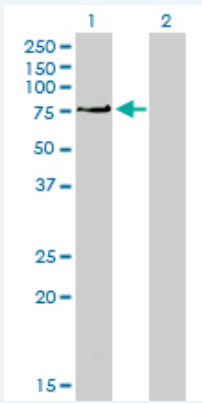


[enlarge](#)

ELISA

RNAi Knockdown (Antibody validated)





Western Blot analysis of PRKCI expression in transfected 293T cell line by PRKCI monoclonal antibody (M01), clone 1G11.

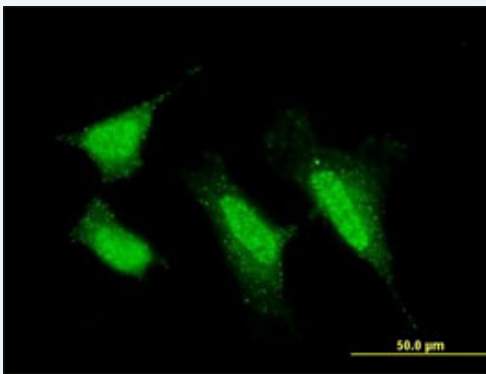
Lane 1: PRKCI transfected lysate(68.3 KDa).
Lane 2: Non-transfected lysate.

[Protocol Download](#)

Western Blot (Recombinant protein)

[Protocol Download](#)

Immunofluorescence

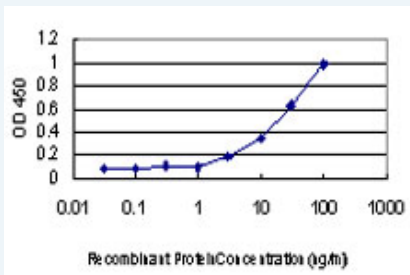


[enlarge this image](#)

Immunofluorescence of monoclonal antibody to PRKCI on HeLa cell . [antibody concentration 10 ug/ml]

[Protocol Download](#)

Sandwich ELISA (Recombinant protein)

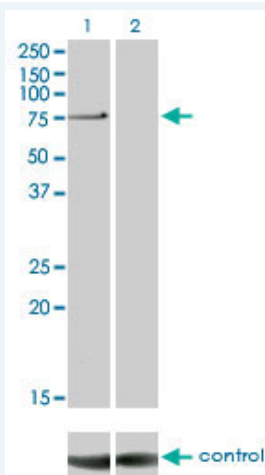


Detection limit for recombinant GST tagged PRKCI is approximately 3ng/ml as a capture antibody.

[Protocol Download](#)

ELISA

RNAi Knockdown (Antibody validated)



Western blot analysis of PRKCI over-expressed 293 cell line, cotransfected with PRKCI Validated Chimera RNAi (Cat # H00005584-R01V) (Lane 2) or non-transfected control (Lane 1). Blot probed with PRKCI monoclonal antibody (M01) clone 1G11 (Cat # H00005584-M01). GAPDH (36.1 kDa) used as specificity and loading control.

 [Protocol Download](#)

Gene Information

Entrez GeneID: [5584](#)

GeneBank [BC022016](#)

Accession#:

Protein [AAH22016](#)

Accession#:

Gene Name: PRKCI

Gene Alias: DXS1179E,MGC26534,PKCI,nPKC-iota

Gene protein kinase C, iota

Description:

Omim ID: [600539](#)

Gene Ontology: [Hyperlink](#)

Gene Summary: This gene encodes a member of the protein kinase C (PKC) family of serine/threonine protein kinases. The PKC family comprises at least eight members, which are differentially expressed and are involved in a wide variety of cellular processes. This protein kinase is calcium-independent and phospholipid-dependent. It is not activated by phorbol esters or diacylglycerol. This kinase can be recruited to vesicle tubular clusters (VTCs) by direct interaction with the small GTPase RAB2, where this kinase phosphorylates glyceraldehyde-3-phosphate dehydrogenase (GAPD/GAPDH) and plays a role in microtubule dynamics in the early secretory pathway. This kinase is found to be necessary for BCL-ABL-mediated resistance to drug-induced apoptosis and therefore protects leukemia cells against drug-induced apoptosis. There is a single exon pseudogene mapped on chromosome X. [provided by RefSeq]

Other Designations: OTTHUMP00000196630,PRKC-lambda/iota,aPKC-lambda/iota,atypical protein kinase C-lambda/iota,protein kinase C iota type

Gene Pathway

[Endocytosis](#) [Insulin signaling pathway](#) [Tight junction](#)

