



# SZABO SCANDIC

Part of Europa Biosite

## Produktinformation



Forschungsprodukte & Biochemikalien



Zellkultur & Verbrauchsmaterial



Diagnostik & molekulare Diagnostik



Laborgeräte & Service

Weitere Information auf den folgenden Seiten!  
See the following pages for more information!



### Lieferung & Zahlungsart

siehe unsere [Liefer- und Versandbedingungen](#)

### Zuschläge

- Mindermengenzuschlag
- Trockeneiszuschlag
- Gefahrgutzuschlag
- Expressversand

### SZABO-SCANDIC HandelsgmbH

Quellenstraße 110, A-1100 Wien

T. +43(0)1 489 3961-0

F. +43(0)1 489 3961-7

[mail@szabo-scandic.com](mailto:mail@szabo-scandic.com)

[www.szabo-scandic.com](http://www.szabo-scandic.com)

[linkedin.com/company/szaboscandic](https://www.linkedin.com/company/szaboscandic) 

**PKN1 purified MaxPab mouse polyclonal antibody (B01P)** MaxPab®

Catalog # : H00005585-B01P

規格 : [ 50 ug ]

[List All](#)

**Specification**

**Product Description:** Mouse polyclonal antibody raised against a full-length human PKN1 protein.

**Immunogen:** PKN1 (AAH40061.1, 1 a.a. ~ 942 a.a) full-length human protein.

**Sequence:**  
 MASDAVQSEPRSWSLLEQLGLAGADLAAPGVQQQLELERERLRREIRK  
 ELKLKEGAENLRRATDDLGRSLGPVELLLRGSSRRDLLHQQLQELHAH  
 VVLPDPAATHDGPQSPGAGGPTCSATNLSRVAGLEKQLAIELKVKGAE  
 NMIQTYNSGSTKDRKLLLTAAQMLQDSKTKIDIIRMQLRRALQAGQLENQ  
 AAPDDTQGSPDLGAVELRIEELRHFRVEHAVAEGAKNVLRLLSAAKAPD  
 RKAVSEAQEKLTESNQKLGLLREALERRLGELPADHPKGRLLREELAAA  
 SSAAFSTRLAGPFPATHYSTLCKPAPLTGTLEVRVVGCRDLPETIPWNP  
 TPSMGPGTPDSRPPFLSRPARGLYSRGSLSGRSSLKAEAENTSEVS  
 TVLKLNTVVGQTSWKPCGPNAWDQSFTLELERARELELAVFWRDQR  
 GLCALFKFLKLEDFLDNERHEVQLDMEPQGCLVAEVTFRNPVIERIPRLRR  
 QKKIFSKQQGKAFQRARQMNDVATWVRLRLRIPNATGTGTFSFGASP  
 GSEARTTGDISVEKLNLTGSDSSPQKSSRDPPSSPSSLSSPIQUESTAPE  
 LPSETQETPGPALCSPLRKSPLTLEDKFLAVLGRGHFGKVLSEFRPS  
 GELFAIKALKKGDIVARDEVESLMCEKRILAAVT SAGHPFLVNLFGCFQTP  
 EHVCFVMEYSAGGDLMLHIHSDVFSEPRAIIFYACVVLGLQFLHEHKIVYR  
 DLKLDNLLDTEGYVKIADFGLCKEKGMYGDRTSTFCGTPEFLAPEVLT  
 DTSYTRAVDWWGLGVLLYEMLVGESPFPGDDEEEVFDSVNDDEVRYPR  
 FLSAEAIGIMRLLRRNPERRLGSSERDAEDVKKQPFRTLGWEALLAR  
 RLPPPFVPTLSGRTDISNFDEEFTGEAPTLSPPRDARPLTAAEQAAFLDF  
 DFVAGGC

**Host:** Mouse

**Reactivity:** Human

**Quality Control Testing:** Antibody reactive against mammalian transfected lysate.

**Storage Buffer:** In 1x PBS, pH 7.4

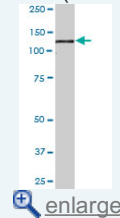
**Storage Instruction:** Store at -20°C or lower. Aliquot to avoid repeated freezing and thawing.

**MSDS:** [Download](#)

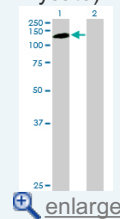
**Datasheet:** [Download](#)

**Application Image**

Western Blot (Tissue lysate)

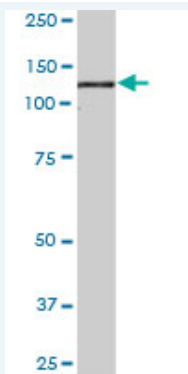


Western Blot (Transfected lysate)



**Applications**

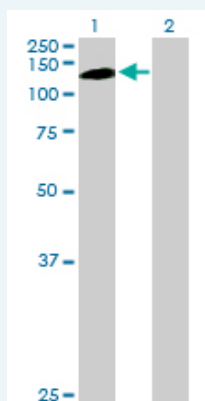
Western Blot (Tissue lysate)



PKN1 MaxPab polyclonal antibody. Western Blot analysis of PKN1 expression in human liver.

 [Protocol Download](#)

#### Western Blot (Transfected lysate)



Western Blot analysis of PKN1 expression in transfected 293T cell line ([H00005585-T01](#)) by PKN1 MaxPab polyclonal antibody.

Lane 1: PKN1 transfected lysate(103.62 KDa).

Lane 2: Non-transfected lysate.

 [Protocol Download](#)

#### Gene Information

**Entrez GeneID:** [5585](#)

**GeneBank** [BC040061.1](#)

**Accession#:**

**Protein** [AAH40061.1](#)

**Accession#:**

**Gene Name:** PKN1

**Gene Alias:** DBK,MGC46204,PAK1,PKN,PKN-ALPHA,PRK1,PRKCL1

**Gene** protein kinase N1

**Description:**

**Omim ID:** [601032](#)

**Gene Ontology:** [Hyperlink](#)

**Gene Summary:** The protein encoded by this gene belongs to the protein kinase C superfamily. This kinase is activated by Rho family of small G proteins and may mediate the Rho-dependent signaling pathway. This kinase can be activated by phospholipids and by limited proteolysis. The 3-phosphoinositide dependent protein kinase-1 (PDPK1/PDK1) is reported to phosphorylate this kinase, which may mediate insulin signals to the actin cytoskeleton. The proteolytic activation of this kinase by caspase-3 or related proteases during apoptosis suggests its role in

signal transduction related to apoptosis. Alternatively spliced transcript variants encoding distinct isoforms have been observed. [provided by RefSeq]

---

**Other Designations:** protein kinase C-like 1,protein kinase C-like PKN,protein kinase C-related kinase 1,serine-threonine kinase N,serine/threonine protein kinase N

---

**Related Disease**

---

[Cardiovascular Diseases](#) [Diabetes Mellitus, Type 2](#) [Edema](#)

---

[服務條款](#) | [隱私權政策](#) | [著作及商標](#) | [網站地圖](#)

©2016 亞諾法生技股份有限公司 Abnova Corporation. 版權所有.