



# SZABO SCANDIC

Part of Europa Biosite

## Produktinformation



Forschungsprodukte & Biochemikalien



Zellkultur & Verbrauchsmaterial



Diagnostik & molekulare Diagnostik



Laborgeräte & Service

Weitere Information auf den folgenden Seiten!  
See the following pages for more information!



### Lieferung & Zahlungsart

siehe unsere [Liefer- und Versandbedingungen](#)

### Zuschläge

- Mindermengenzuschlag
- Trockeneiszuschlag
- Gefahrgutzuschlag
- Expressversand

### SZABO-SCANDIC HandelsgmbH

Quellenstraße 110, A-1100 Wien

T. +43(0)1 489 3961-0

F. +43(0)1 489 3961-7

[mail@szabo-scandic.com](mailto:mail@szabo-scandic.com)

[www.szabo-scandic.com](http://www.szabo-scandic.com)

[linkedin.com/company/szaboscandic](https://www.linkedin.com/company/szaboscandic) 

**PKN1 purified MaxPab rabbit polyclonal antibody (D01P)** MaxPab®

Catalog # : H00005585-D01P

規格 : [ 100 ug ]

[List All](#)

**Specification**

**Product Description:** Rabbit polyclonal antibody raised against a full-length human PKN1 protein.

**Immunogen:** PKN1 (AAH40061.1, 1 a.a. ~ 942 a.a) full-length human protein.

**Sequence:**  
 MASDAVQSEPRSWLLEQLGLAGADLAAPGVQQQLELERERLRREIRK  
 ELKLKEGAENLRRATDDLGRSLGPVELLLRGSSRRDLLHQQLQELHAH  
 VVLPDPAATHDGPQSPGAGGPTCSATNLSRVAGLEKQLAIELKVKQGAE  
 NMIQTYNSGSTKDRKLLTAQQMLQDSKTKIDIIRMQLRRALQAGQLENQ  
 AAPDDTQGSPDLGAVELRIEELRHFRVEHAVAEGAKNVLRLLSAAKAPD  
 RKAVSEAQEKLESNQKLGLLREALERRLGELPADHPKGRLLREELAAA  
 SSAAFSTRLAGPFPATHYSTLCKPAPLTGTLEVRVVGCRDLPETIPWNP  
 TPSMGPGTPDSRPPFLSRPARGLYSRGSLSGRSSLKAEAENTSEVS  
 TVLKLNTVVGQTSWKPCGPNAWDQSFTLELERARELELAVFWRDQR  
 GLCALFKFLKLEDFLDNERHEVQLDMEPQGCLVAEVTFRNPVIERIPRLRR  
 QKKIFSKQQGKAFQRARQMNDVATWVRLRLRIPNATGTGTFSFGASP  
 GSEARTTGDISVEKLNLTGSDSSPQKSSRDPPSSPSSLSSPIQESTAPE  
 LPSETQETPGPALCSPLRKSPLEDFKFLAVLGRGHFGKVLVSEFRPS  
 GELFAIKALKKGDIVARDEVESLMCEKRILAAVT SAGHPFLVNLFGCFQTP  
 EHVCFVMEYSAGGDLMLHIHSDVFSEPRAI FYSACVVLGLQFLHEHKIVYR  
 DLKLDNLLDTEGYVKIADFGLCKEGMGYGDRTSTFCGTPEFLAPEVLT  
 DTSYTRAVDWWGLGVLLYEMLVGESPFPGDDEEEVFDSVNDDEVRYPR  
 FLSAEAIGIMRLLRRNPERRLGSSERDAEDVKKQPFRTLGWEALLAR  
 RLPPFPVPTLSGRTDISNFDEEFTGEAPTLSPPRDARPLTAAEQAAFLDF  
 DVFAGGC

**Host:** Rabbit

**Reactivity:** Human, Mouse

**Quality Control Testing:** Antibody reactive against mammalian transfected lysate.

**Storage Buffer:** In 1xPBS, pH 7.4

**Storage Instruction:** Store at -20°C or lower. Aliquot to avoid repeated freezing and thawing.

**MSDS:** [Download](#)

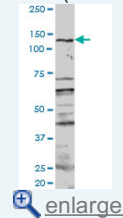
**Datasheet:** [Download](#)

**Applications**

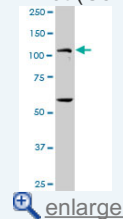
**Western Blot (Tissue lysate)**

**Application Image**

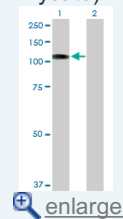
Western Blot (Tissue lysate)

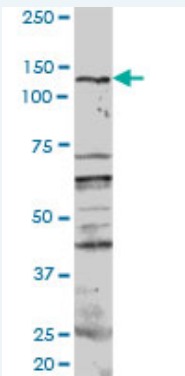


Western Blot (Cell lysate)



Western Blot (Transfected lysate)

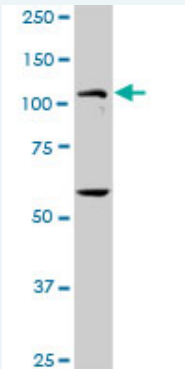




PKN1 MaxPab rabbit polyclonal antibody. Western Blot analysis of PKN1 expression in mouse testis.

[Protocol Download](#)

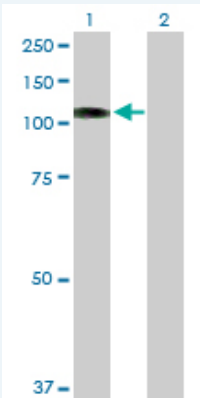
#### Western Blot (Cell lysate)



PKN1 MaxPab rabbit polyclonal antibody. Western Blot analysis of PKN1 expression in K-562.

[Protocol Download](#)

#### Western Blot (Transfected lysate)



Western Blot analysis of PKN1 expression in transfected 293T cell line ([H00005585-T01](#)) by PKN1 MaxPab polyclonal antibody.

Lane 1: PKN1 transfected lysate(103.90 KDa).

Lane 2: Non-transfected lysate.

[Protocol Download](#)

#### Gene Information

Entrez GeneID: [5585](#)

GeneBank [BC040061.1](#)  
Accession#:

Protein [AAH40061.1](#)  
Accession#:

Gene Name: PKN1

**Gene Alias:** DBK,MGC46204,PAK1,PKN,PKN-ALPHA,PRK1,PRKCL1

**Gene Description:** protein kinase N1

**Omim ID:** [601032](#)

**Gene Ontology:** [Hyperlink](#)

**Gene Summary:** The protein encoded by this gene belongs to the protein kinase C superfamily. This kinase is activated by Rho family of small G proteins and may mediate the Rho-dependent signaling pathway. This kinase can be activated by phospholipids and by limited proteolysis. The 3-phosphoinositide dependent protein kinase-1 (PDPK1/PDK1) is reported to phosphorylate this kinase, which may mediate insulin signals to the actin cytoskeleton. The proteolytic activation of this kinase by caspase-3 or related proteases during apoptosis suggests its role in signal transduction related to apoptosis. Alternatively spliced transcript variants encoding distinct isoforms have been observed. [provided by RefSeq]

**Other Designations:** protein kinase C-like 1,protein kinase C-like PKN,protein kinase C-related kinase 1,serine-threonine kinase N,serine/threonine protein kinase N

#### **Related Disease**

[Cardiovascular Diseases](#) [Diabetes Mellitus, Type 2](#) [Edema](#)

[服務條款](#) | [隱私權政策](#) | [著作及商標](#) | [網站地圖](#)

©2016 亞諾法生技股份有限公司 Abnova Corporation. 版權所有.