



# SZABO SCANDIC

Part of Europa Biosite

## Produktinformation



Forschungsprodukte & Biochemikalien



Zellkultur & Verbrauchsmaterial



Diagnostik & molekulare Diagnostik



Laborgeräte & Service

Weitere Information auf den folgenden Seiten!  
See the following pages for more information!



### Lieferung & Zahlungsart

siehe unsere [Liefer- und Versandbedingungen](#)

### Zuschläge

- Mindermengenzuschlag
- Trockeneiszuschlag
- Gefahrgutzuschlag
- Expressversand

### SZABO-SCANDIC HandelsgmbH

Quellenstraße 110, A-1100 Wien

T. +43(0)1 489 3961-0

F. +43(0)1 489 3961-7

[mail@szabo-scandic.com](mailto:mail@szabo-scandic.com)

[www.szabo-scandic.com](http://www.szabo-scandic.com)

[linkedin.com/company/szaboscandic](https://www.linkedin.com/company/szaboscandic) 

## PRKCQ polyclonal antibody (A01)

Catalog # : H00005588-A01

規格 : [ 50 uL ]

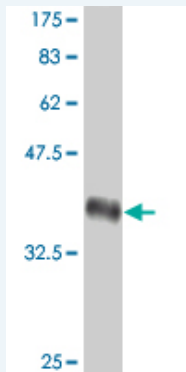
[List All](#)

### Specification

<b>Product Description:</b>	Mouse polyclonal antibody raised against a partial recombinant PRKCQ.
<b>Immunogen:</b>	PRKCQ (NP_006248, 1 a.a. ~ 100 a.a) partial recombinant protein with GST tag.
<b>Sequence:</b>	MSPFLRIGLSNFDGSCQSCQGEAVNPYCAVLVKEYVESENGQMYIQKKPTMYPPWDSTFDAHINKGRVMQIIVKGNVDLISETTVELYSLAERCCKNN
<b>Host:</b>	Mouse
<b>Reactivity:</b>	Human

**Quality Control** Antibody Reactive Against Recombinant Protein.

**Testing:**



Western Blot detection against Immunogen (37.11 kDa) .

**Storage Buffer:** 50 % glycerol

**Storage Instruction:** Store at -20°C or lower. Aliquot to avoid repeated freezing and thawing.

**MSDS:** [Download](#)

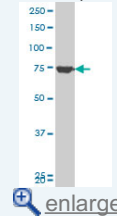
**Datasheet:** [Download](#)

### Applications

Western Blot (Cell lysate)

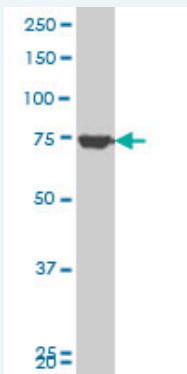
### Application Image

Western Blot (Cell lysate)



Western Blot (Recombinant protein)

ELISA



PRKCQ polyclonal antibody (A01), Lot # 051003JCO1 Western Blot analysis of PRKCQ expression in Jurkat ( Cat # L017V1 ).

 [Protocol Download](#)

#### Western Blot (Recombinant protein)

 [Protocol Download](#)

#### ELISA

#### Gene Information

**Entrez GeneID:** [5588](#)

**GeneBank Accession#:** [NM\\_006257](#)

**Protein Accession#:** [NP\\_006248](#)

**Gene Name:** PRKCQ

**Gene Alias:** MGC126514,MGC141919,PRKCT,nPKC-theta

**Gene Description:** protein kinase C, theta

**Omim ID:** [600448](#)

**Gene Ontology:** [Hyperlink](#)

**Gene Summary:** Protein kinase C (PKC) is a family of serine- and threonine-specific protein kinases that can be activated by calcium and the second messenger diacylglycerol. PKC family members phosphorylate a wide variety of protein targets and are known to be involved in diverse cellular signaling pathways. PKC family members also serve as major receptors for phorbol esters, a class of tumor promoters. Each member of the PKC family has a specific expression profile and is believed to play a distinct role. The protein encoded by this gene is one of the PKC family members. It is a calcium-independent and phospholipid-dependent protein kinase. This kinase is important for T-cell activation. It is required for the activation of the transcription factors NF-kappaB and AP-1, and may link the T cell receptor (TCR) signaling complex to the activation of the transcription factors. [provided by RefSeq]

**Other Designations:** OTTHUMP00000019053,OTTHUMP00000043364,OTTHUMP00000043365

#### Gene Pathway

[Adipocytokine signaling pathway](#) [T cell receptor signaling pathway](#) [Tight junction](#) [Vascular smooth muscle contraction](#)

#### Related Disease

[Alzheimer Disease](#) [Arthritis](#) [Juvenile Rheumatoid Arthritis](#) [Rheumatoid Carcinoma](#)  
[Cardiovascular Diseases](#) [Celiac Disease](#) [Cerebral Hemorrhage](#) [Diabetes Mellitus, Type 1](#)  
[Diabetes Mellitus, Type 2](#) [Disease Progression](#) [Edema](#) [Genetic Predisposition to Disease](#)  
[Hypertension](#) [Inflammation](#) [Intracranial Hemorrhages](#) [Kidney Failure, Chronic](#) [Narcolepsy](#)  
[Prostatic Neoplasms](#) [Stroke](#)

**... see more**

---

[服務條款](#) | [隱私權政策](#) | [著作及商標](#) | [網站地圖](#)

©2016 亞諾法生技股份有限公司 Abnova Corporation. 版權所有.