



# SZABO SCANDIC

Part of Europa Biosite

## Produktinformation



Forschungsprodukte & Biochemikalien



Zellkultur & Verbrauchsmaterial



Diagnostik & molekulare Diagnostik



Laborgeräte & Service

Weitere Information auf den folgenden Seiten!  
See the following pages for more information!



### Lieferung & Zahlungsart

siehe unsere [Liefer- und Versandbedingungen](#)

### Zuschläge

- Mindermengenzuschlag
- Trockeneiszuschlag
- Gefahrgutzuschlag
- Expressversand

### SZABO-SCANDIC HandelsgmbH

Quellenstraße 110, A-1100 Wien

T. +43(0)1 489 3961-0

F. +43(0)1 489 3961-7

[mail@szabo-scandic.com](mailto:mail@szabo-scandic.com)

[www.szabo-scandic.com](http://www.szabo-scandic.com)

[linkedin.com/company/szaboscandic](https://www.linkedin.com/company/szaboscandic) 

**PRKCQ purified MaxPab rabbit polyclonal antibody (D01P)** MaxPab®

Catalog # : H00005588-D01P

規格 : [ 100 ug ]

[List All](#)

**Specification**

**Product Description:** Rabbit polyclonal antibody raised against a full-length human PRKCQ protein.

**Immunogen:** PRKCQ (NP\_006248.1, 1 a.a. ~ 706 a.a) full-length human protein.

**Sequence:**  
MSPFLRIGLSNFDGSCQSCQGEAVNPYCAVLVKEYVESENGQMYIQKK  
PTMYPPWDSTFFDAHINKGRVMQIIVKGNVDLISETTVELYSLAERCRRNN  
GKTEIWLELKPQGRMLMNARYFLEMSDTKDMNEFETEGFFALHQRRGAI  
KQAKVHHVKCHEFTATFFPQPTFCVSCHEFVWGLNKQGYQCRQCNAAI  
HKKCIDKVIKCTGSAINCRETMFHKERFKIDMPHRFKVYNYKSPTFCEHC  
GTLWGLARQGLKCDACGMNVHRCQTKVANLCGINQKLMAEALAMIE  
STQQARCLRDTEQIFREGPVEIGLPCSIKNEARPPCLPTPGKREPQGISW  
ESPLDEVDKMCMLPEPELNKERPSLQIKLKIEDFILHKMLGKGSFGKVFLA  
EFKKTNQFFAIKALKKDVVLMDDDVECTMVEKRVLSLAWEHFPLTHMFC  
TFQTKENLFFVMEYLNGGDLMYHIQSCHKFDLSRATFYAAEIIIGLQFLHS  
KGIVYRDLKLDNILLDKDGHKIADFGMCKENMLGDAKTNTFCGTPDYIAP  
EILLGQKYNHSVDWWSFGVLLYEMLIGQSPFHGQDEEELFHSIRMDNPF  
YPRWLEKEAKDLLVKLVFREPEKRLGVRGDIRQHPLFREINWEELERKEI  
DPPFRPKVKSPFDCSNFDKEFLNEKPRLSFADRALINSMDQNMFRNFSF  
MNPGMERLIS

**Host:** Rabbit

**Reactivity:** Human

**Quality Control Testing:** Antibody reactive against mammalian transfected lysate.

**Storage Buffer:** In 1x PBS, pH 7.4

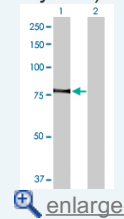
**Storage Instruction:** Store at -20°C or lower. Aliquot to avoid repeated freezing and thawing.

**MSDS:**  [Download](#)

**Datasheet:**  [Download](#)

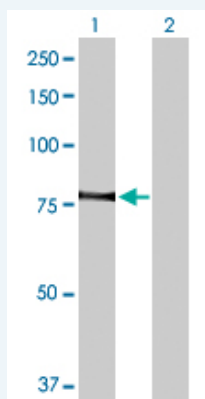
**Application Image**

Western Blot (Transfected lysate)



**Applications**

Western Blot (Transfected lysate)



Western Blot analysis of PRKCQ expression in transfected 293T cell line (H00005588-T02) by PRKCQ MaxPab polyclonal antibody.

Lane 1: PRKCQ transfected lysate(81.90 KDa).

Lane 2: Non-transfected lysate.

 [Protocol Download](#)

## Gene Information

**Entrez GeneID:** [5588](#)

**GeneBank Accession#:** [NM\\_006257.2](#)

**Protein Accession#:** [NP\\_006248.1](#)

**Gene Name:** PRKCQ

**Gene Alias:** MGC126514,MGC141919,PRKCT,nPKC-theta

**Gene Description:** protein kinase C, theta

**Omim ID:** [600448](#)

**Gene Ontology:** [Hyperlink](#)

**Gene Summary:** Protein kinase C (PKC) is a family of serine- and threonine-specific protein kinases that can be activated by calcium and the second messenger diacylglycerol. PKC family members phosphorylate a wide variety of protein targets and are known to be involved in diverse cellular signaling pathways. PKC family members also serve as major receptors for phorbol esters, a class of tumor promoters. Each member of the PKC family has a specific expression profile and is believed to play a distinct role. The protein encoded by this gene is one of the PKC family members. It is a calcium-independent and phospholipid-dependent protein kinase. This kinase is important for T-cell activation. It is required for the activation of the transcription factors NF-kappaB and AP-1, and may link the T cell receptor (TCR) signaling complex to the activation of the transcription factors. [provided by RefSeq]

**Other Designations:** OTTHUMP00000019053,OTTHUMP00000043364,OTTHUMP00000043365

## Gene Pathway

[Adipocytokine signaling pathway](#) [T cell receptor signaling pathway](#) [Tight junction](#)  
[Vascular smooth muscle contraction](#)

## Related Disease

[Alzheimer Disease](#) [Arthritis](#) [Juvenile Rheumatoid Arthritis](#) [Rheumatoid Carcinoma](#)  
[Cardiovascular Diseases](#) [Celiac Disease](#) [Cerebral Hemorrhage](#) [Diabetes Mellitus, Type 1](#)  
[Diabetes Mellitus, Type 2](#) [Disease Progression](#) [Edema](#) [Genetic Predisposition to Disease](#)  
[Hypertension](#) [Inflammation](#) [Intracranial Hemorrhages](#) [Kidney Failure](#) [Chronic Narcolepsy](#)  
[Prostatic Neoplasms](#) [Stroke](#)

... see more