



SZABO SCANDIC

Part of Europa Biosite

Produktinformation



Forschungsprodukte & Biochemikalien



Zellkultur & Verbrauchsmaterial



Diagnostik & molekulare Diagnostik



Laborgeräte & Service

Weitere Information auf den folgenden Seiten!
See the following pages for more information!



Lieferung & Zahlungsart

siehe unsere [Liefer- und Versandbedingungen](#)

Zuschläge

- Mindermengenzuschlag
- Trockeneiszuschlag
- Gefahrgutzuschlag
- Expressversand

SZABO-SCANDIC HandelsgmbH

Quellenstraße 110, A-1100 Wien

T. +43(0)1 489 3961-0

F. +43(0)1 489 3961-7

mail@szabo-scandic.com

www.szabo-scandic.com

[linkedin.com/company/szaboscandic](https://www.linkedin.com/company/szaboscandic) 

PRKCQ 293T Cell Transient Overexpression Lysate(Denatured)

Catalog # : H00005588-T02

規格 : [100 uL]

[List All](#)

Specification

Transfected Cell Line: 293T

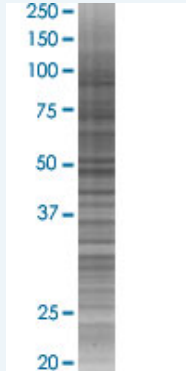
Plasmid: pCMV-PRKCQ full-length

Host: Human

Theoretical MW (kDa): 81.9

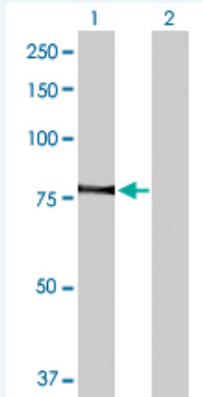
Quality Control Testing: Transient overexpression cell lysate was tested with Anti-PRKCQ antibody ([H00005588-D01P](#)) by Western Blots.

SDS-PAGE Gel



PRKCQ transfected lysate.

Western Blot



Lane 1: PRKCQ transfected lysate (81.90 KDa)

Lane 2: Non-transfected lysate.

Storage Buffer: 1X Sample Buffer (50 mM Tris-HCl, 2% SDS, 10% glycerol, 300 mM 2-mercaptoethanol, 0.01% Bromophenol blue)

Storage Instruction: Store at -80°C. Aliquot to avoid repeated freezing and thawing.

MSDS:  [Download](#)

Applications

Western Blot

Gene Information

Entrez GeneID: [5588](#)

GeneBank Accession#: [NM_006257.2](#)

Protein Accession#: [NP_006248.1](#)

Gene Name: PRKCQ

Gene Alias: MGC126514,MGC141919,PRKCT,nPKC-theta

Gene Description: protein kinase C, theta

Omim ID: [600448](#)

Gene Ontology: [Hyperlink](#)

Gene Summary: Protein kinase C (PKC) is a family of serine- and threonine-specific protein kinases that can be activated by calcium and the second messenger diacylglycerol. PKC family members phosphorylate a wide variety of protein targets and are known to be involved in diverse cellular signaling pathways. PKC family members also serve as major receptors for phorbol esters, a class of tumor promoters. Each member of the PKC family has a specific expression profile and is believed to play a distinct role. The protein encoded by this gene is one of the PKC family members. It is a calcium-independent and phospholipid-dependent protein kinase. This kinase is important for T-cell activation. It is required for the activation of the transcription factors NF-kappaB and AP-1, and may link the T cell receptor (TCR) signaling complex to the activation of the transcription factors. [provided by RefSeq]

Other Designations: OTTHUMP00000019053,OTTHUMP00000043364,OTTHUMP00000043365

Gene Pathway

[Adipocytokine signaling pathway](#) [T cell receptor signaling pathway](#) [Tight junction](#) [Vascular smooth muscle contraction](#)

Related Disease

[Alzheimer Disease](#) [Arthritis](#) [Juvenile Rheumatoid Arthritis](#) [Rheumatoid Carcinoma](#) [Cardiovascular Diseases](#) [Celiac Disease](#) [Cerebral Hemorrhage](#) [Diabetes Mellitus, Type 1](#) [Diabetes Mellitus, Type 2](#) [Disease Progression](#) [Edema](#) [Genetic Predisposition to Disease](#) [Hypertension](#) [Inflammation](#) [Intracranial Hemorrhages](#) [Kidney Failure](#) [Chronic Narcolepsy](#) [Prostatic Neoplasms](#) [Stroke](#)

... see more