



# SZABO SCANDIC

Part of Europa Biosite

## Produktinformation



Forschungsprodukte & Biochemikalien



Zellkultur & Verbrauchsmaterial



Diagnostik & molekulare Diagnostik



Laborgeräte & Service

Weitere Information auf den folgenden Seiten!  
See the following pages for more information!



### Lieferung & Zahlungsart

siehe unsere [Liefer- und Versandbedingungen](#)

### Zuschläge

- Mindermengenzuschlag
- Trockeneiszuschlag
- Gefahrgutzuschlag
- Expressversand

### SZABO-SCANDIC HandelsgmbH

Quellenstraße 110, A-1100 Wien

T. +43(0)1 489 3961-0

F. +43(0)1 489 3961-7

[mail@szabo-scandic.com](mailto:mail@szabo-scandic.com)

[www.szabo-scandic.com](http://www.szabo-scandic.com)

[linkedin.com/company/szaboscandic](https://www.linkedin.com/company/szaboscandic) 

**PRKCSH MaxPab mouse polyclonal antibody (B01)** MaxPab®

Catalog # : H00005589-B01

規格 : [ 50 uL ]

[List All](#)

**Specification**

**Product Description:** Mouse polyclonal antibody raised against a full-length human PRKCSH protein.

**Immunogen:** PRKCSH (AAH13586.1, 1 a.a. ~ 398 a.a) full-length human protein.

**Sequence:**  
 MAEVTREGFRLKKILIEDWKKAREEKQKKLIELQAGKKSLEDQVEMLRTV  
 KEEAEKPEREAKQHQKLWEEQLAAAKAQEQELAADAFKELDDDMDG  
 TVSVTELQTHPELDTDGDGALSEAEQALLSGDTQTDATSFYDRVWAAI  
 RDKYRSEALPTDLPTSPAPDLTEPKKEQPPVPSSPTEEEEEEEEEEAE  
 EEEEEEDSEEAPPPLSPPQPASPAEEDKMPYDEQTQAFIDAAQEARNK  
 FEEAERSLKDMEESIRNLEQEISFDGPNGEFAYLYSQCYELTTNEYVYR  
 LCPFKLVSQPKLGGSPSLGTWGSWIGPDHDKFSAMKYEQGTGCWQ  
 GPNRSTTVRLLCGKETMVTSTTEPSRCEYLMELMTPAACPEPPPEAPTE  
 DDHDEL

**Host:** Mouse

**Reactivity:** Human

**Quality Control Testing:** Antibody reactive against mammalian transfected lysate.

**Storage Buffer:** No additive

**Storage Instruction:** Store at -20°C or lower. Aliquot to avoid repeated freezing and thawing.

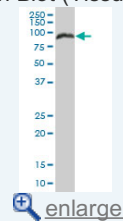
**Note:** For IHC and IF applications, antibody purification with Protein A will be needed prior to use.

**MSDS:**  [Download](#)

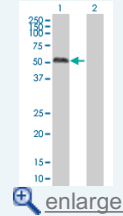
**Datasheet:**  [Download](#)

**Application Image**

Western Blot (Tissue lysate)

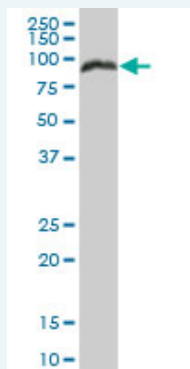


Western Blot (Transfected lysate)



**Applications**

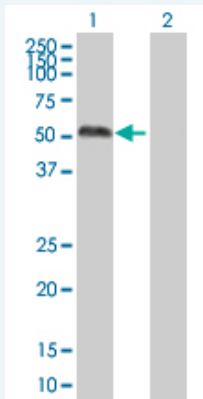
Western Blot (Tissue lysate)



PRKCSH MaxPab polyclonal antibody. Western Blot analysis of PRKCSH expression in human liver.

 [Protocol Download](#)


## Western Blot (Transfected lysate)



Western Blot analysis of PRKCSH expression in transfected 293T cell line ([H00005589-T01](#)) by PRKCSH MaxPab polyclonal antibody.

Lane 1: PRKCSH transfected lysate(43.78 KDa).

Lane 2: Non-transfected lysate.

 [Protocol Download](#)

## Gene Information

**Entrez GeneID:** [5589](#)

**GeneBank** [BC013586](#)

**Accession#:**

**Protein** [AAH13586](#)

**Accession#:**

**Gene Name:** PRKCSH

**Gene Alias:** AGE-R2,G19P1,PCLD,PLD1

**Gene** protein kinase C substrate 80K-H

**Description:**

**Omim ID:** [174050](#), [177060](#)

**Gene Ontology:** [Hyperlink](#)

**Gene Summary:** This gene encodes the beta-subunit of glucosidase II, an N-linked glycan-processing enzyme in the endoplasmic reticulum (ER). This protein is an acidic phospho-protein known to be a substrate for protein kinase C. Mutations in this gene have been associated with the autosomal dominant polycystic liver disease (PCLD). Alternatively spliced transcript variants encoding distinct isoforms have been observed. [provided by RefSeq]

**Other Designations:** AGE-binding receptor 2,glucosidase II, beta subunit,hepatocystin,protein kinase C substrate, 80 Kda protein

## Related Disease

[Cysts](#) [Diabetes Mellitus](#), [Type 1 Diabetic Nephropathies](#) [Genetic Predisposition to Disease](#)  
[Liver Diseases](#)