



SZABO SCANDIC

Part of Europa Biosite

Produktinformation



Forschungsprodukte & Biochemikalien



Zellkultur & Verbrauchsmaterial



Diagnostik & molekulare Diagnostik



Laborgeräte & Service

Weitere Information auf den folgenden Seiten!
See the following pages for more information!



Lieferung & Zahlungsart

siehe unsere [Liefer- und Versandbedingungen](#)

Zuschläge

- Mindermengenzuschlag
- Trockeneiszuschlag
- Gefahrgutzuschlag
- Expressversand

SZABO-SCANDIC HandelsgmbH

Quellenstraße 110, A-1100 Wien

T. +43(0)1 489 3961-0

F. +43(0)1 489 3961-7

mail@szabo-scandic.com

www.szabo-scandic.com

[linkedin.com/company/szaboscandic](https://www.linkedin.com/company/szaboscandic) 

PRKCSH purified MaxPab rabbit polyclonal antibody (D01P) MaxPab®

Catalog # : H00005589-D01P

規格 : [100 ug]

[List All](#)

Specification

Product Description: Rabbit polyclonal antibody raised against a full-length human PRKCSH protein.

Immunogen: PRKCSH (AAH13586.1, 1 a.a. ~ 398 a.a) full-length human protein.

Sequence:
 MAEVTREGFRLKKILIEDWKKAREEKQKKLIELQAGKKSLEDQVEMLRTV
 KEEAEKPEREAKEQHQLWEEQLAAAKAQEQELAADAFKELDDDDMDG
 TVSVTELQTHPELDTDGDGALSEAEQAALLSGDTQTDATSFYDRVWAAI
 RDKYRSEALPTDLPTSPAPDLTEPKKEQPPVSSPTEEEEEEEEEEEEAE
 EEEEEEDSEEAPPPLSPPQPASPAEEDKMPPYDEQTQAFIDAAQEARNK
 FEEAERSLKDMEESIRNLEQEISFDGPNGEFAYLYSQCYELTTNEYVYR
 LCPFKLVSQPKLGGSPSTSLGTWGSWIGPDHDKFSAMKYEQGTGCWQ
 GPNRSTTVRLLCGKETMVTSTTEPSRCEYLMELMTPAACPEPPPEAPTE
 DDHDEL

Host: Rabbit

Reactivity: Human

Quality Control Testing: Antibody reactive against mammalian transfected lysate.

Storage Buffer: In 1x PBS, pH 7.4

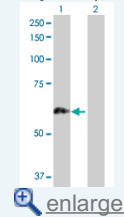
Storage Instruction: Store at -20°C or lower. Aliquot to avoid repeated freezing and thawing.

MSDS:  [Download](#)

Datasheet:  [Download](#)

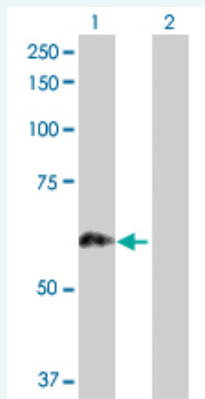
Application Image

Western Blot (Transfected lysate)



Applications

Western Blot (Transfected lysate)



Western Blot analysis of PRKCSH expression in transfected 293T cell line (H00005589-T02) by PRKCSH MaxPab polyclonal antibody.

Lane 1: PRKCSH transfected lysate(45.00 KDa).

Lane 2: Non-transfected lysate.

Gene Information

Entrez GeneID: [5589](#)

**GeneBank
Accession#:** [BC013586](#)

**Protein
Accession#:** [AAH13586.1](#)

Gene Name: PRKCSH

Gene Alias: AGE-R2,G19P1,PCLD,PLD1

**Gene
Description:** protein kinase C substrate 80K-H

Omim ID: [174050](#), [177060](#)

Gene Ontology: [Hyperlink](#)

Gene Summary: This gene encodes the beta-subunit of glucosidase II, an N-linked glycan-processing enzyme in the endoplasmic reticulum (ER). This protein is an acidic phospho-protein known to be a substrate for protein kinase C. Mutations in this gene have been associated with the autosomal dominant polycystic liver disease (PCLD). Alternatively spliced transcript variants encoding distinct isoforms have been observed. [provided by RefSeq]

**Other
Designations:** AGE-binding receptor 2,glucosidase II, beta subunit,hepatocystin,protein kinase C substrate, 80 Kda protein

Related Disease

[Cysts](#) [Diabetes Mellitus, Type 1](#) [Diabetic Nephropathies](#) [Genetic Predisposition to Disease](#)
[Liver Diseases](#)