



SZABO SCANDIC

Part of Europa Biosite

Produktinformation



Forschungsprodukte & Biochemikalien



Zellkultur & Verbrauchsmaterial



Diagnostik & molekulare Diagnostik



Laborgeräte & Service

Weitere Information auf den folgenden Seiten!
See the following pages for more information!



Lieferung & Zahlungsart

siehe unsere [Liefer- und Versandbedingungen](#)

Zuschläge

- Mindermengenzuschlag
- Trockeneiszuschlag
- Gefahrgutzuschlag
- Expressversand

SZABO-SCANDIC HandelsgmbH

Quellenstraße 110, A-1100 Wien

T. +43(0)1 489 3961-0

F. +43(0)1 489 3961-7

mail@szabo-scandic.com

www.szabo-scandic.com

[linkedin.com/company/szaboscandic](https://www.linkedin.com/company/szaboscandic) 

PRKCSH (Human) IP-WB Antibody Pair

Catalog # : H00005589-PW2

規格 : [1 Set]

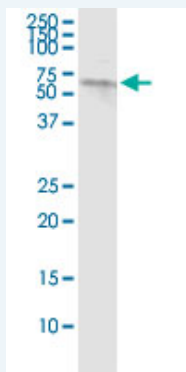
List All

Specification

Product Description: This IP-WB antibody pair set comes with one antibody for immunoprecipitation and another to detect the precipitated protein in western blot.

Reactivity: Human

Quality Control Testing: Immunoprecipitation-Western Blot (IP-WB)



Immunoprecipitation of PRKCSH transfected lysate using rabbit polyclonal anti-PRKCSH and Protein A Magnetic Bead ([U0007](#)), and immunoblotted with mouse purified polyclonal anti-PRKCSH.

Supplied Product: Antibody pair set content:
1. Antibody pair for IP: rabbit polyclonal anti-PRKCSH (300 ul)
2. Antibody pair for WB: mouse purified polyclonal anti-PRKCSH (50 ug)

Storage Instruction: Store reagents of the antibody pair set at -20°C or lower. Please aliquot to avoid repeated freeze thaw cycle. Reagents should be returned to -20°C storage immediately after use.

Applications

Immunoprecipitation-Western Blot

 [Protocol Download](#)

Gene Information

Entrez GeneID: [5589](#)

Gene Name: PRKCSH

Gene Alias: AGE-R2,G19P1,PCLD,PLD1

Gene Description: protein kinase C substrate 80K-H

Omim ID: [174050](#), [177060](#)

Gene Ontology: [Hyperlink](#)

Gene Summary: This gene encodes the beta-subunit of glucosidase II, an N-linked

glycan-processing enzyme in the endoplasmic reticulum (ER). This protein is an acidic phospho-protein known to be a substrate for protein kinase C. Mutations in this gene have been associated with the autosomal dominant polycystic liver disease (PCLD). Alternatively spliced transcript variants encoding distinct isoforms have been observed. [provided by RefSeq]

Other AGE-binding receptor 2,glucosidase II, beta
Designations: subunit,hepatocystin,protein kinase C substrate, 80 Kda protein

Related Disease

[Cysts](#) [Diabetes Mellitus, Type 1](#) [Diabetic Nephropathies](#) [Genetic Predisposition to Disease](#)
[Liver Diseases](#)

[服務條款](#) | [隱私權政策](#) | [著作及商標](#) | [網站地圖](#)

©2016 亞諾法生技股份有限公司 Abnova Corporation. 版權所有.