



SZABO SCANDIC

Part of Europa Biosite

Produktinformation



Forschungsprodukte & Biochemikalien



Zellkultur & Verbrauchsmaterial



Diagnostik & molekulare Diagnostik



Laborgeräte & Service

Weitere Information auf den folgenden Seiten!
See the following pages for more information!



Lieferung & Zahlungsart

siehe unsere [Liefer- und Versandbedingungen](#)

Zuschläge

- Mindermengenzuschlag
- Trockeneiszuschlag
- Gefahrgutzuschlag
- Expressversand

SZABO-SCANDIC HandelsgmbH

Quellenstraße 110, A-1100 Wien

T. +43(0)1 489 3961-0

F. +43(0)1 489 3961-7

mail@szabo-scandic.com

www.szabo-scandic.com

[linkedin.com/company/szaboscandic](https://www.linkedin.com/company/szaboscandic) 

PRKCSH 293T Cell Transient Overexpression Lysate(Denatured)

Catalog # : H00005589-T01

規格 : [100 uL]

List All

Specification

Transfected Cell Line: 293T

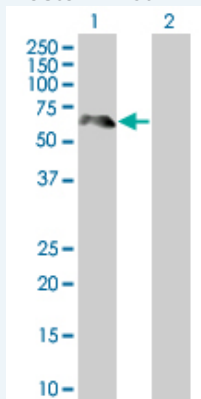
Plasmid: pCMV-PRKCSH full-length

Host: Human

Theoretical MW (kDa): 43.89

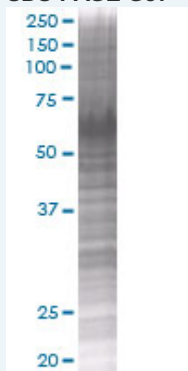
Quality Control Testing: Transient overexpression cell lysate was tested with Anti-PRKCSH antibody ([H00005589-B01](#)) by Western Blots.

Western Blot



Lane 1: PRKCSH transfected lysate (45 KDa)
Lane 2: Non-transfected lysate.

SDS-PAGE Gel



PRKCSH transfected lysate.

Storage Buffer: 1X Sample Buffer (50 mM Tris-HCl, 2% SDS, 10% glycerol, 300 mM 2-mercaptoethanol, 0.01% Bromophenol blue)

Storage Instruction: Store at -80°C. Aliquot to avoid repeated freezing and thawing.

MSDS:  [Download](#)

Applications

Application Image

Western Blot

Western Blot

Gene Information

Entrez GeneID: [5589](#)

**GeneBank
Accession#:** [BC013586](#)

**Protein
Accession#:** [AAH13586](#)

Gene Name: PRKCSH

Gene Alias: AGE-R2,G19P1,PCLD,PLD1

**Gene
Description:** protein kinase C substrate 80K-H

Omim ID: [174050](#), [177060](#)

Gene Ontology: [Hyperlink](#)

Gene Summary: This gene encodes the beta-subunit of glucosidase II, an N-linked glycan-processing enzyme in the endoplasmic reticulum (ER). This protein is an acidic phospho-protein known to be a substrate for protein kinase C. Mutations in this gene have been associated with the autosomal dominant polycystic liver disease (PCLD). Alternatively spliced transcript variants encoding distinct isoforms have been observed. [provided by RefSeq]

**Other
Designations:** AGE-binding receptor 2,glucosidase II, beta subunit,hepatocystin,protein kinase C substrate, 80 Kda protein

Related Disease

[Cysts](#) [Diabetes Mellitus, Type 1](#) [Diabetic Nephropathies](#) [Genetic Predisposition to Disease](#)
[Liver Diseases](#)

[服務條款](#) | [隱私權政策](#) | [著作及商標](#) | [網站地圖](#)

©2016 亞諾法生技股份有限公司 Abnova Corporation. 版權所有.