



# SZABO SCANDIC

Part of Europa Biosite

## Produktinformation



Forschungsprodukte & Biochemikalien



Zellkultur & Verbrauchsmaterial



Diagnostik & molekulare Diagnostik



Laborgeräte & Service

Weitere Information auf den folgenden Seiten!  
See the following pages for more information!



### Lieferung & Zahlungsart

siehe unsere [Liefer- und Versandbedingungen](#)

### Zuschläge

- Mindermengenzuschlag
- Trockeneiszuschlag
- Gefahrgutzuschlag
- Expressversand

### SZABO-SCANDIC HandelsgmbH

Quellenstraße 110, A-1100 Wien

T. +43(0)1 489 3961-0

F. +43(0)1 489 3961-7

[mail@szabo-scandic.com](mailto:mail@szabo-scandic.com)

[www.szabo-scandic.com](http://www.szabo-scandic.com)

[linkedin.com/company/szaboscandic](https://www.linkedin.com/company/szaboscandic) 

## PRKCSH 293T Cell Transient Overexpression Lysate(Denatured)

Catalog # : H00005589-T02

規格 : [ 100 uL ]

[List All](#)

### Specification

**Transfected Cell Line:** 293T

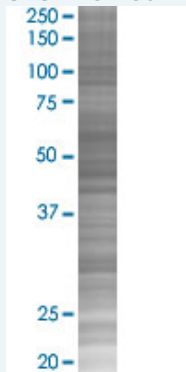
**Plasmid:** pCMV-PRKCSH full-length

**Host:** Human

**Theoretical MW (kDa):** 45

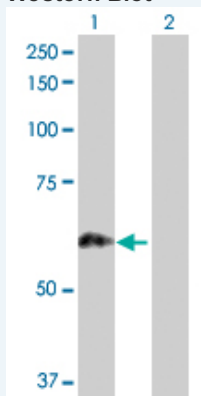
**Quality Control Testing:** Transient overexpression cell lysate was tested with Anti-PRKCSH antibody ([H00005589-D01P](#)) by Western Blots.

#### SDS-PAGE Gel



PRKCSH transfected lysate.

#### Western Blot



Lane 1: PRKCSH transfected lysate ( 45.00 KDa)

Lane 2: Non-transfected lysate.

**Storage Buffer:** 1X Sample Buffer (50 mM Tris-HCl, 2% SDS, 10% glycerol, 300 mM 2-mercaptoethanol, 0.01% Bromophenol blue)

**Storage Instruction:** Store at -80°C. Aliquot to avoid repeated freezing and thawing.

**MSDS:**  [Download](#)

### Applications

## Western Blot

### Gene Information

**Entrez GeneID:** [5589](#)

**GeneBank  
Accession#:** [BC013586](#)

**Protein  
Accession#:** [AAH13586.1](#)

**Gene Name:** PRKCSH

**Gene Alias:** AGE-R2,G19P1,PCLD,PLD1

**Gene  
Description:** protein kinase C substrate 80K-H

**Omim ID:** [174050](#), [177060](#)

**Gene Ontology:** [Hyperlink](#)

**Gene Summary:** This gene encodes the beta-subunit of glucosidase II, an N-linked glycan-processing enzyme in the endoplasmic reticulum (ER). This protein is an acidic phospho-protein known to be a substrate for protein kinase C. Mutations in this gene have been associated with the autosomal dominant polycystic liver disease (PCLD). Alternatively spliced transcript variants encoding distinct isoforms have been observed. [provided by RefSeq]

**Other  
Designations:** AGE-binding receptor 2,glucosidase II, beta subunit,hepatocystin,protein kinase C substrate, 80 Kda protein

### Related Disease

[Cysts](#) [Diabetes Mellitus, Type 1](#) [Diabetic Nephropathies](#) [Genetic Predisposition to Disease](#)  
[Liver Diseases](#)

[服務條款](#) | [隱私權政策](#) | [著作及商標](#) | [網站地圖](#)

©2016 亞諾法生技股份有限公司 Abnova Corporation. 版權所有.