



SZABO SCANDIC

Part of Europa Biosite

Produktinformation



Forschungsprodukte & Biochemikalien



Zellkultur & Verbrauchsmaterial



Diagnostik & molekulare Diagnostik



Laborgeräte & Service

Weitere Information auf den folgenden Seiten!
See the following pages for more information!



Lieferung & Zahlungsart

siehe unsere [Liefer- und Versandbedingungen](#)

Zuschläge

- Mindermengenzuschlag
- Trockeneiszuschlag
- Gefahrgutzuschlag
- Expressversand

SZABO-SCANDIC HandelsgmbH

Quellenstraße 110, A-1100 Wien

T. +43(0)1 489 3961-0

F. +43(0)1 489 3961-7

mail@szabo-scandic.com

www.szabo-scandic.com

[linkedin.com/company/szaboscandic](https://www.linkedin.com/company/szaboscandic) 



PRKCZ purified MaxPab rabbit polyclonal antibody (D01P) MaxPab®

Catalog # : H00005590-D01P

規格 : [100 ug]

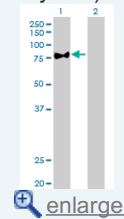
[List All](#)

Specification

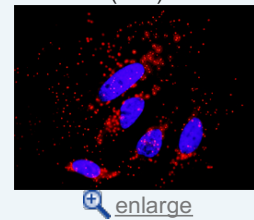
Product Description:	Rabbit polyclonal antibody raised against a full-length human PRKCZ protein.
Immunogen:	PRKCZ (NP_002735.3, 1 a.a. ~ 592 a.a) full-length human protein.
Sequence:	MPSRTGPKMEGSGGRVRLKAHYGGDIFITSVDAATTFEELCEEVRDMC RLHQQHPLTLKWVDSEGDPTVSSQMELEEFRLARQCRDEGLIIVFP STPEQPGLPCGEDKSIYRRGARRWRKLYRANGHLFQAKRFNRRAYCG QCSEIRWGLARQGYRCINCKLLVHKRCHGLVPLTCRKHMD SVMPSQEP PVDDKNEDADLPSEETDGIAYISSSRKHDSIKDDSEDLPVIDGMDGKISQ GLGLQDFDLIRVIGRGSYAKVLLVRLKKNQIYAMKVVKELVHDDDEDID WVQTEKHVFEQASSNPFLVGLHSCFQTT SRLFLVIEYVNGGDLMFHMQ RQRKLP EEHARFYAAEICIALNFLHERGIYRDLKLDNMLLDADGHIKLT DY GMCKEGLGPGDTTSTFCGTPNYIAPEILRGEEYGFSDVWWALGVLMFE MMAGRSPFDITDNPDMNTEDYLFQVILEKPIRIPRFLSVKASHVLKGF LNK DPKERLGC RPQTGFSDIKSHAFR SIDWDLLEKKQALPPFQPQITDDYG LDNFDTQFTSEPVQLTPDDEDAIKRIDQSEFEGFEYINPLLLSTEE SV
Host:	Rabbit
Reactivity:	Human
Quality Control Testing:	Antibody reactive against mammalian transfected lysate.
Storage Buffer:	In 1x PBS, pH 7.4
Storage Instruction:	Store at -20°C or lower. Aliquot to avoid repeated freezing and thawing.
MSDS:	 Download
Datasheet:	 Download

Application Image

Western Blot (Transfected lysate)

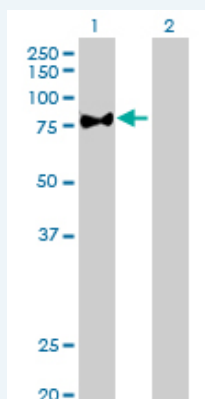


In situ Proximity Ligation Assay (Cell)



Applications

Western Blot (Transfected lysate)

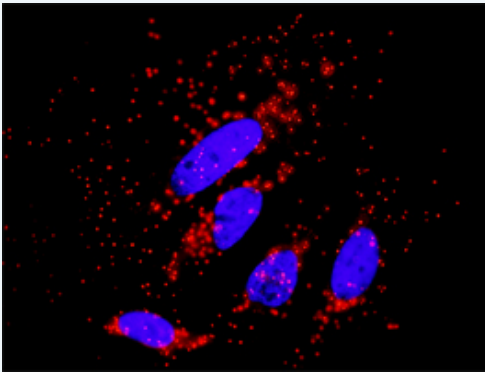


Western Blot analysis of PRKCZ expression in transfected 293T cell line ([H00005590-T01](#)) by PRKCZ MaxPab polyclonal antibody.

Lane 1: PRKCZ transfected lysate(67.70 kDa).
Lane 2: Non-transfected lysate.

 [Protocol Download](#)

In situ Proximity Ligation Assay (Cell)



Proximity Ligation Analysis of protein-protein interactions between PRKCZ and AKT3. HeLa cells were stained with anti-PRKCZ rabbit purified polyclonal 1:1200 and anti-AKT3 mouse monoclonal antibody 1:50. Each red dot represents the detection of protein-protein interaction complex, and nuclei were counterstained with DAPI (blue).

Gene Information

Entrez GeneID: [5590](#)

**GeneBank
Accession#:** [NM_002744.4](#)

**Protein
Accession#:** [NP_002735.3](#)

Gene Name: PRKCZ

Gene Alias: PKC-ZETA,PKC2

**Gene
Description:** protein kinase C, zeta

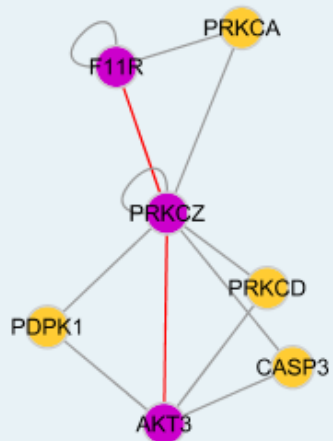
Omim ID: [176982](#)

Gene Ontology: [Hyperlink](#)

Gene Summary: Protein kinase C (PKC) zeta is a member of the PKC family of serine/threonine kinases which are involved in a variety of cellular processes such as proliferation, differentiation and secretion. Unlike the classical PKC isoenzymes which are calcium-dependent, PKC zeta exhibits a kinase activity which is independent of calcium and diacylglycerol but not of phosphatidylserine. Furthermore, it is insensitive to typical PKC inhibitors and cannot be activated by phorbol ester. Unlike the classical PKC isoenzymes, it has only a single zinc finger module. These structural and biochemical properties indicate that the zeta subspecies is related to, but distinct from other isoenzymes of PKC. Alternative splicing results in multiple transcript variants encoding different isoforms. [provided by RefSeq]

**Other
Designations:** OTTHUMP0000001368,OTTHUMP00000044160

Interactome



Gene Pathway

[Chemokine signaling pathway](#) [Endocytosis](#) [Insulin signaling pathway](#) [Tight junction](#)
[Type II diabetes mellitus](#)

Related Disease

[Cardiovascular Diseases](#) [Diabetes Mellitus, Type 2](#) [Edema](#)
[Genetic Predisposition to Disease](#)

[服務條款](#) | [隱私權政策](#) | [著作及商標](#) | [網站地圖](#)

©2016 亞諾法生技股份有限公司 Abnova Corporation. 版權所有.