



SZABO SCANDIC

Part of Europa Biosite

Produktinformation



Forschungsprodukte & Biochemikalien



Zellkultur & Verbrauchsmaterial



Diagnostik & molekulare Diagnostik



Laborgeräte & Service

Weitere Information auf den folgenden Seiten!
See the following pages for more information!



Lieferung & Zahlungsart

siehe unsere [Liefer- und Versandbedingungen](#)

Zuschläge

- Mindermengenzuschlag
- Trockeneiszuschlag
- Gefahrgutzuschlag
- Expressversand

SZABO-SCANDIC HandelsgmbH

Quellenstraße 110, A-1100 Wien

T. +43(0)1 489 3961-0

F. +43(0)1 489 3961-7

mail@szabo-scandic.com

www.szabo-scandic.com

[linkedin.com/company/szaboscandic](https://www.linkedin.com/company/szaboscandic) 

PRKDC polyclonal antibody (A01)

Catalog # : H00005591-A01

規格 : [50 uL]

List All

Specification

Product Description: Mouse polyclonal antibody raised against a partial recombinant PRKDC.

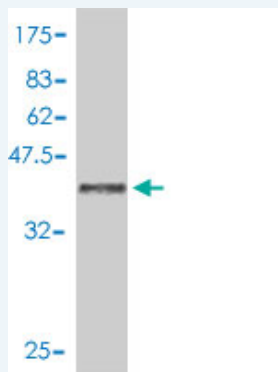
Immunogen: PRKDC (NP_008835, 4019 a.a. ~ 4128 a.a) partial recombinant protein with GST tag.

Sequence: KMLKKGGSWIQEINVAEKNWYPRQKICYAKRKLAPANPAVITCDELLLGH
EKAPAFRDYVAVARGSKDHNIRAQEPESGLSEETQVKCLMDQATDPNIL
GRTWEGREPWM

Host: Mouse

Reactivity: Human

Quality Control Testing: Antibody Reactive Against Recombinant Protein.



Western Blot detection against Immunogen (38.21 kDa) .

Storage Buffer: 50 % glycerol

Storage Instruction: Store at -20°C or lower. Aliquot to avoid repeated freezing and thawing.

MSDS: [Download](#)

Datasheet: [Download](#)

Applications

Western Blot (Recombinant protein)

[Protocol Download](#)

ELISA

Gene Information

Entrez GeneID: [5591](#)

GeneBank Accession#: [NM_006904](#)

Application Image

Western Blot (Recombinant protein)

ELISA

Protein Accession#: [NP_008835](#)

Gene Name: PRKDC

Gene Alias: DNA-PKcs, DNAPK, DNP1, HYRC, HYRC1, XRCC7, p350

Gene Description: protein kinase, DNA-activated, catalytic polypeptide

Omim ID: [600899](#)

Gene Ontology: [Hyperlink](#)

Gene Summary: The PRKDC gene encodes the catalytic subunit of a nuclear DNA-dependent serine/threonine protein kinase (DNA-PK). The second component is the autoimmune antigen Ku (MIM 152690), which is encoded by the G22P1 gene on chromosome 22q. On its own, the catalytic subunit of DNA-PK is inactive and relies on the G22P1 component to direct it to the DNA and trigger its kinase activity; PRKDC must be bound to DNA to express its catalytic properties.[supplied by OMIM]

Other Designations: hyper-radiosensitivity of murine scid mutation, complementing 1

Gene Pathway

[Cell cycle Non-homologous end-joining](#)

Related Disease

[Adenocarcinoma](#) [Ataxia telangiectasia](#) [Bone Neoplasms](#) [Brain Neoplasms](#) [Breast cancer](#) [Breast Neoplasms](#) [Carcinoma, Papillary](#) [Carcinoma, Renal Cell](#) [Carcinoma, Transitional Cell](#) [Central Nervous System Neoplasms](#) [DNA Damage](#) [Genetic Predisposition to Disease](#) [Glioma](#) [Head and Neck Neoplasms](#) [Hematologic Diseases](#) [Hodgkin Disease](#) [Kidney Neoplasms](#) [Lung Neoplasms](#) [Lymphoma, Non-Hodgkin](#)

... see more